



www.monoequip.com



Bx OVEN

ECOTOUCH CONTROL

SPARES MANUAL

ALL MODELS

When ordering spares please quote the **machine serial number** which can be found on the silver information plate of the machine and on the front cover of your manual.

MONO EQUIPMENT
Queensway
Swansea West Industrial Estate
Swansea. SA5 4EB UK

Tel. +44(0)1792 561234
email: spares@monoequip.com
Spares Tel. +44(0)1792 564039
Fax. 01792 561016

When ordering spares please quote the **machine serial number** which can be found on the silver information plate of the machine.

MACHINE SERIAL NUMBER



PART 1

PAGE 3

FG150 10 TRAY OVEN SPARES SECTION

PART 2

PAGE 12

FG159 4/5 TRAY 18" X 30" OVEN SPARES SECTION

PART 3

PAGE 20

FG158 4/5 TRAY 60cm X 40cm OVEN SPARES SECTION

PART 4

PAGE 28

FG153 4/5 TRAY 40cm X 60cm OVEN SPARES SECTION

PART 5

PAGE 36

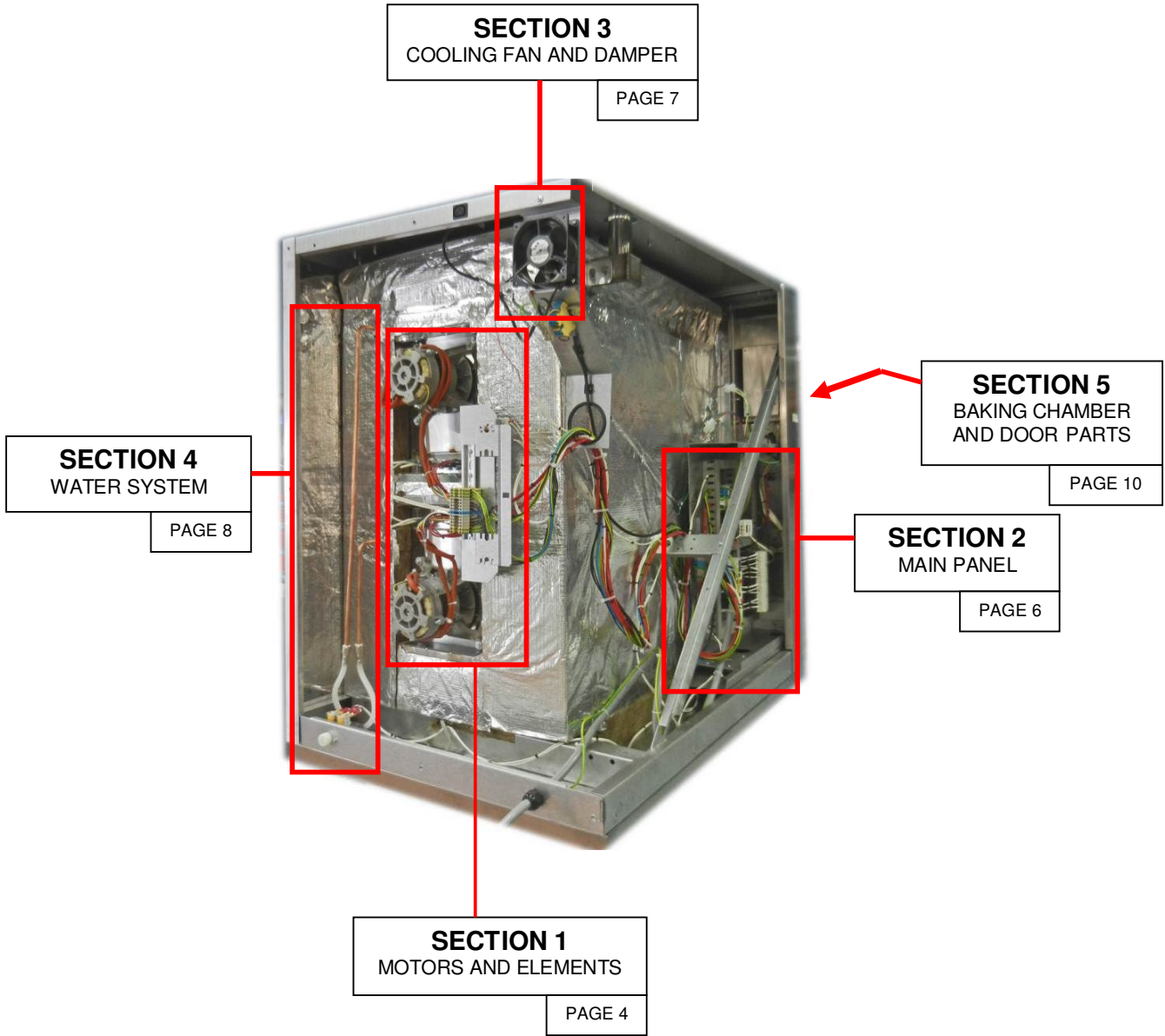
CONDENSER INFORMATION (all versions)

[email:spares@monoequip.com](mailto:spares@monoequip.com)

Spares +44(0)1792 564039

PART 1 10 TRAY OVEN SPARES SECTION

FG150



REAR VIEW WITH OUTER SHEETING REMOVED

PART 1 / SECTION 1 – 10 TRAY - MOTORS AND ELEMENTS

FG150

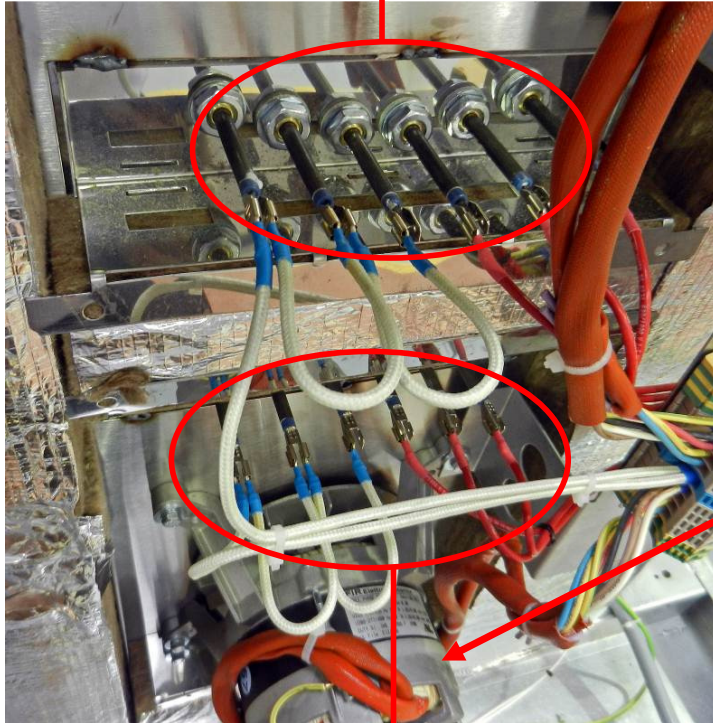
8Kw ovens

HEATING ELEMENT – B847-04-068 = 240volts
B847-04-073 = 220volts

PART 30

7Kw ovens

HEATING ELEMENT – B847-04-067 = 240volts
B847-04-074 = 220volts



PART 18

PART 19

TOP NOT SHOWN

FAN MOTORS - B720-74-001

8Kw ovens

HEATING ELEMENT – B847-04-068 = 240volts
B847-04-073 = 220volts

PART 31

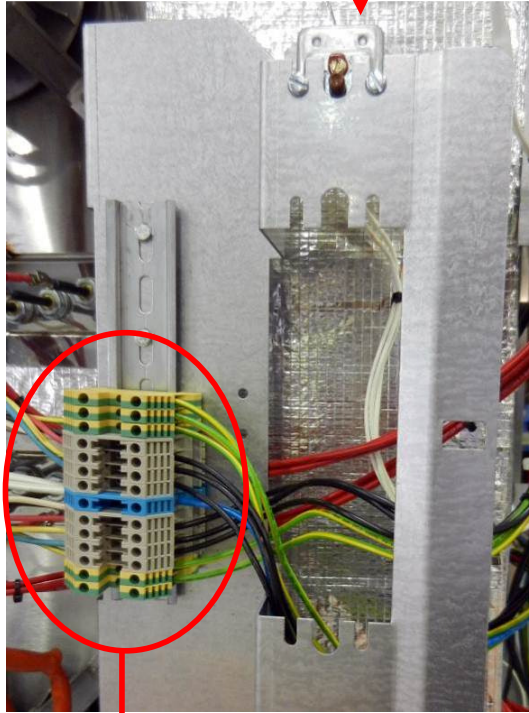
7Kw ovens

HEATING ELEMENT – B847-04-067 = 240volts
B847-04-074 = 220volts

PART NUMBERS REFER TO DRAWING M1500E25-75100 IN ELECTRICAL MANUAL

PART 21

OVERHEAT THERMOSTAT – B888-30-014



TB3

MOTOR AND ELEMENT CONNECTIONS

PART NUMBERS REFER TO DRAWING M1500E25-75100 IN ELECTRICAL MANUAL

PART 1 / SECTION 2 – 10 TRAY - MAIN PANEL

FG150

PT-4A FAN MOTOR OVERLOAD

B801-03-020

PT4B FAN MOTOR OVERLOAD AUX. CONTACTOR

B801-14-012

PT-5A FAN MOTOR OVERLOAD

B801-03-020

PT5B FAN MOTOR OVERLOAD AUX. CONTACTOR

B801-14-012

PART 1

INTERIOR LIGHTING MCB

B872-22-063

PART 2

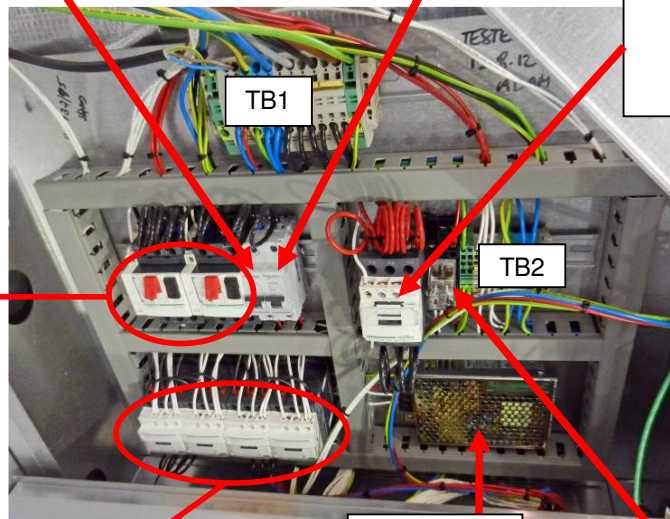
CONTROL CIRCUIT MCB

B872-22-062

PART 15

HEATING ELEMENT CONTACTOR

B801-08-020



PART 14

24v DC POWER SUPPLY UNIT
B801-93-005

FAN MOTOR CONTACTORS

B801-08-031

PT-10A (TOP FORWARD)

PT-10B (TOP REVERSE)

PT-11A (BTM FORWARD)

PT-11B (BTM REVERSE)

INTERLOCK UNIT X2

B801-18-005

PT-8A INTERIOR LIGHT RELAY

B723-37-004

PT8B INTERIOR LIGHT RELAY BASE

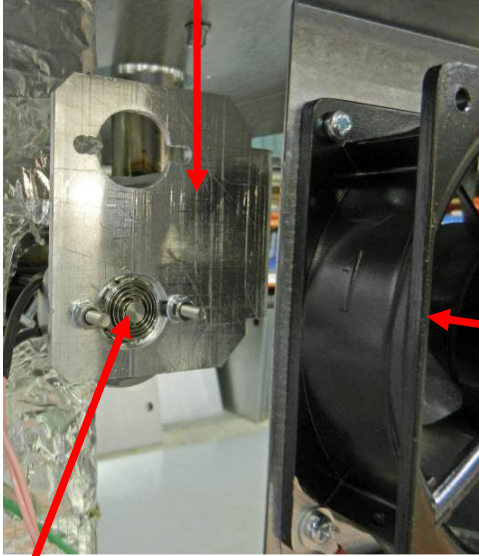
B723-36-001

PART NUMBERS REFER TO DRAWING M1500E25-75100 IN ELECTRICAL MANUAL

PART 1 / SECTION 3 – 10 TRAY - COOLING FAN AND DAMPER

FG150

DAMPER BRACKET 150-02-01000



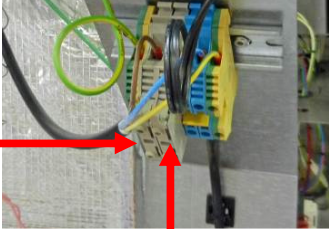
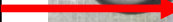
PART 34

**REAR FAN UNIT
B869-75-018**



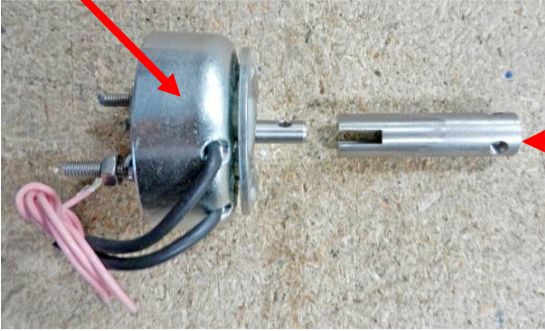
PART 37

**AUX. POWER OUTLET FUSE
B842-85-039**



PART 17

**DAMPER SOLENOID L/H OVEN B749-83-003
DAMPER SOLENOID R/H OVEN B749-83-004**



PART 35

**REAR FAN UNIT FUSE
B842-85-025**

**COUPLING
158-02-00600**



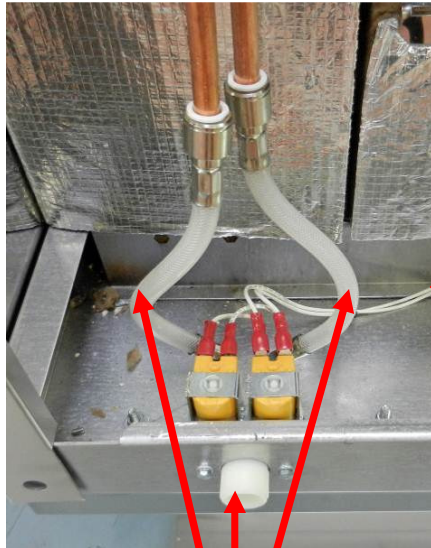
PART NUMBERS REFER TO DRAWING M1500E25-75100 IN ELECTRICAL MANUAL

PART 1 / SECTION 4 – 10 TRAY – WATER/STEAM SYSTEM

FG150

DELIVERY PIPE - LONG
150-07-00800

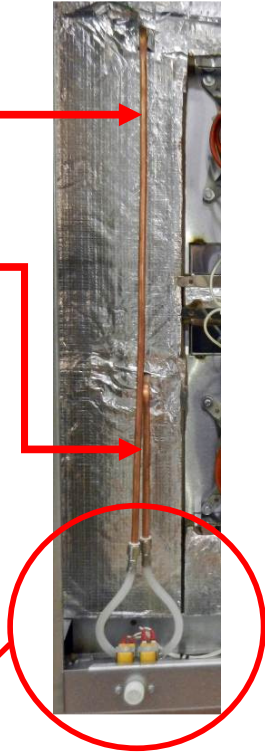
DELIVERY PIPE - SHORT
150-07-00700



PART 20

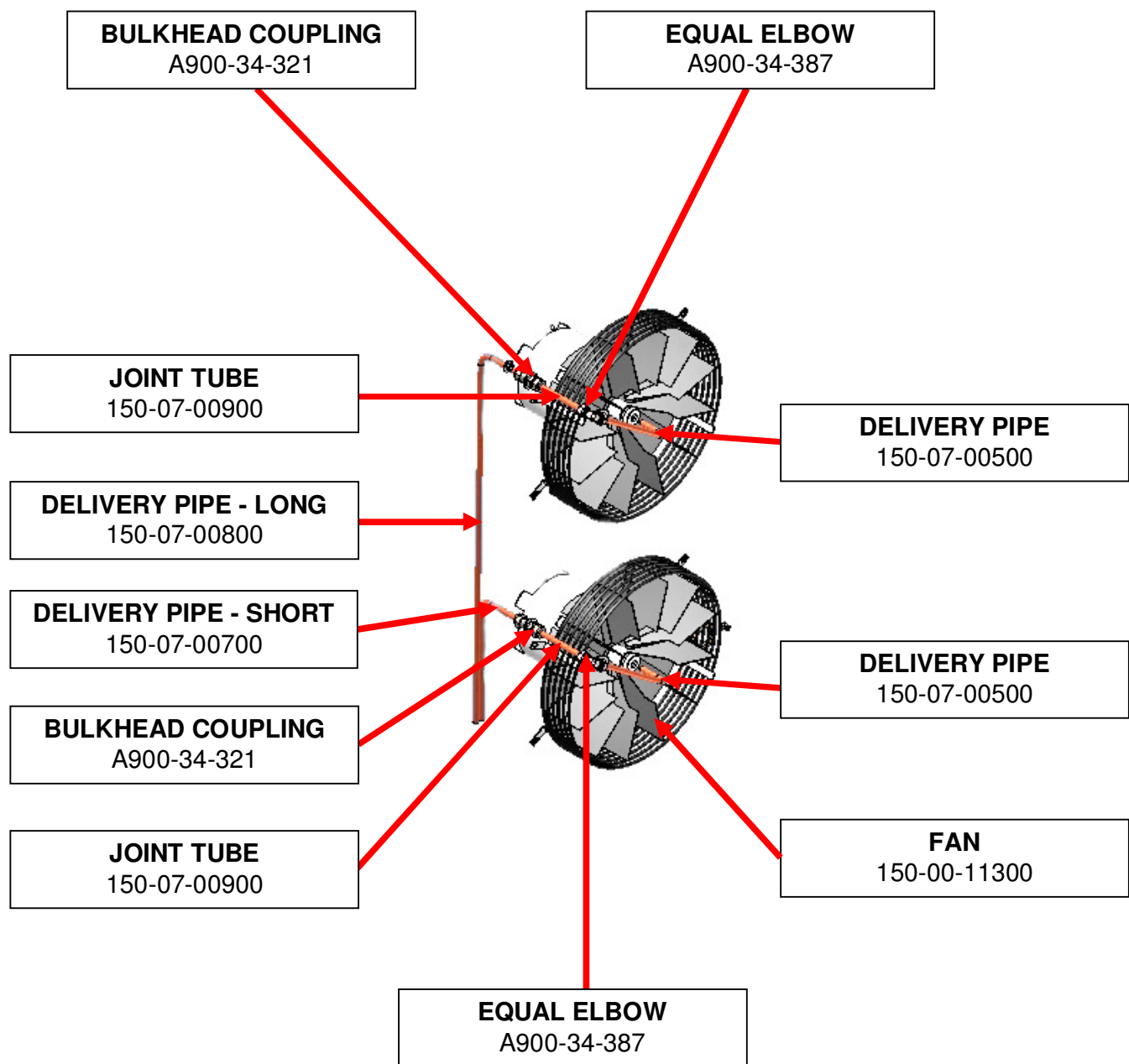
WATER SOLENOID (INC. HOSES)
150-07-00400

HOSE – BLUE (NOT SHOWN ATTACHED)
A900-34-087



PART 1 / SECTION 4 – 10 TRAY – WATER/STEAM SYSTEM

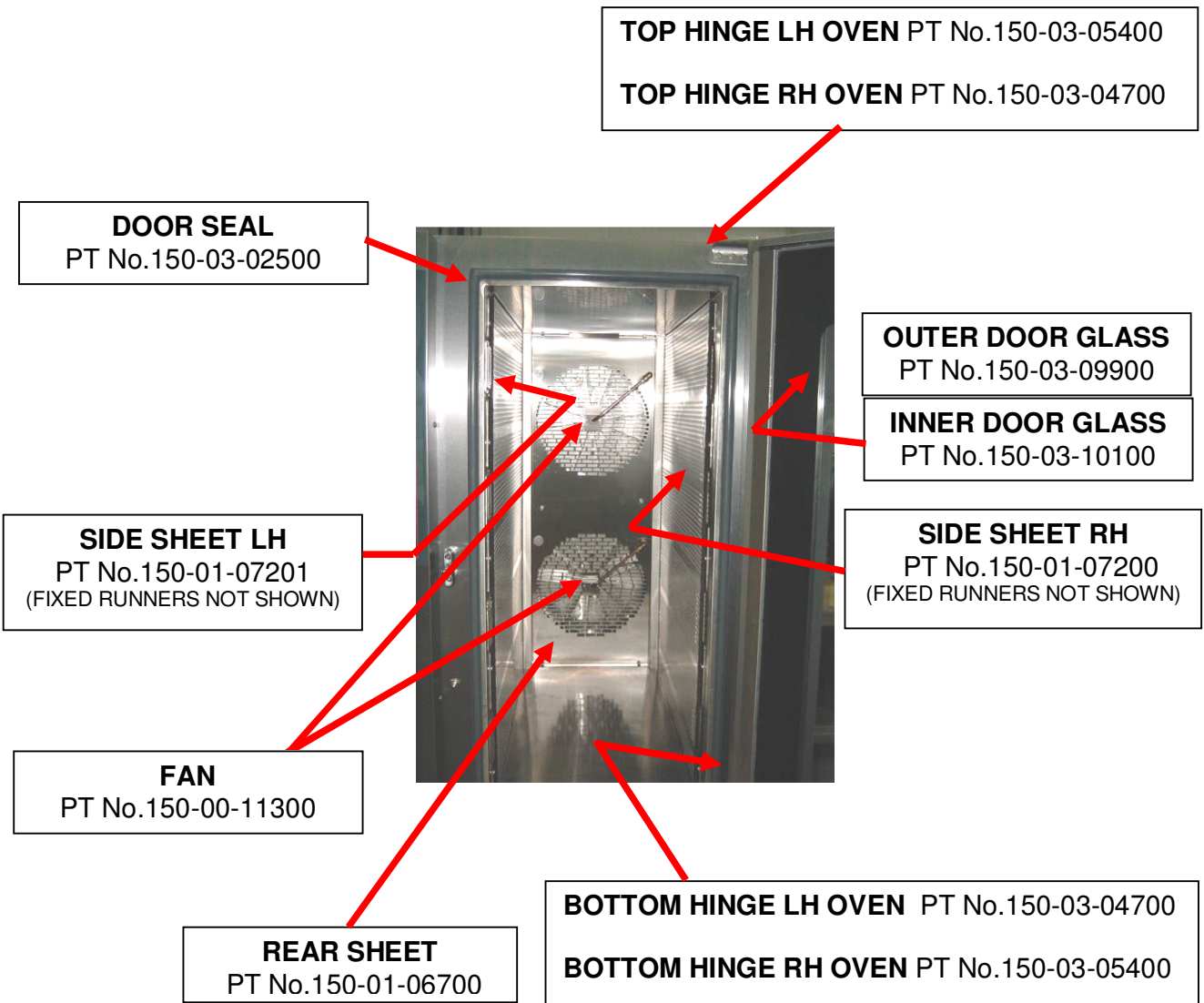
FG150



COMPLETE STEAM ASSY KIT = PT No. 150-07-00003
INCLUDES 150-01-07700 PIPE GUIDE BRKT X 2
AND 150-07-00400 DOUBLE SOLENOID INLET VALVE.

PART 1 / SECTION 5 – 10 TRAY - BAKING CHAMBER AND DOOR PARTS

FG150



DOOR SWITCH
PT No.B842-07-023

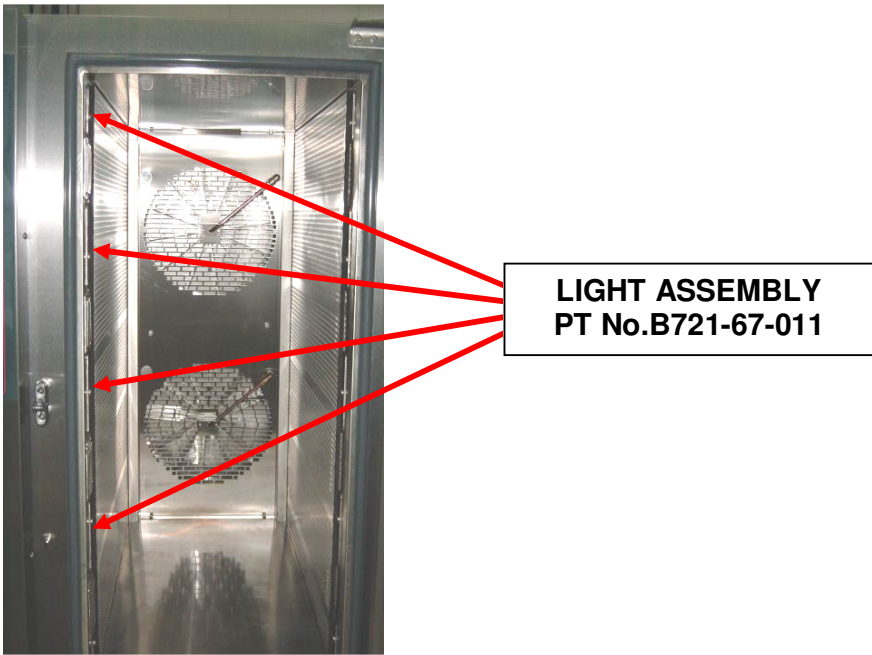


HANDLE/ CATCH ASSEMBLY
PT No.A900-27-171

COMPLETE DOOR ASSEMBLY = PT No 150-03-09500 LH AND RH (STATE WHICH REQ'D)

PART 1 / SECTION 5 – 10 TRAY - BAKING CHAMBER AND DOOR PARTS

FG150



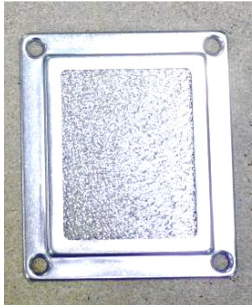
INDIVIDUAL LIGHT ASSEMBLY PARTS AVAILABLE AS BELOW



REPLACEMENT BULB = B857-94-007



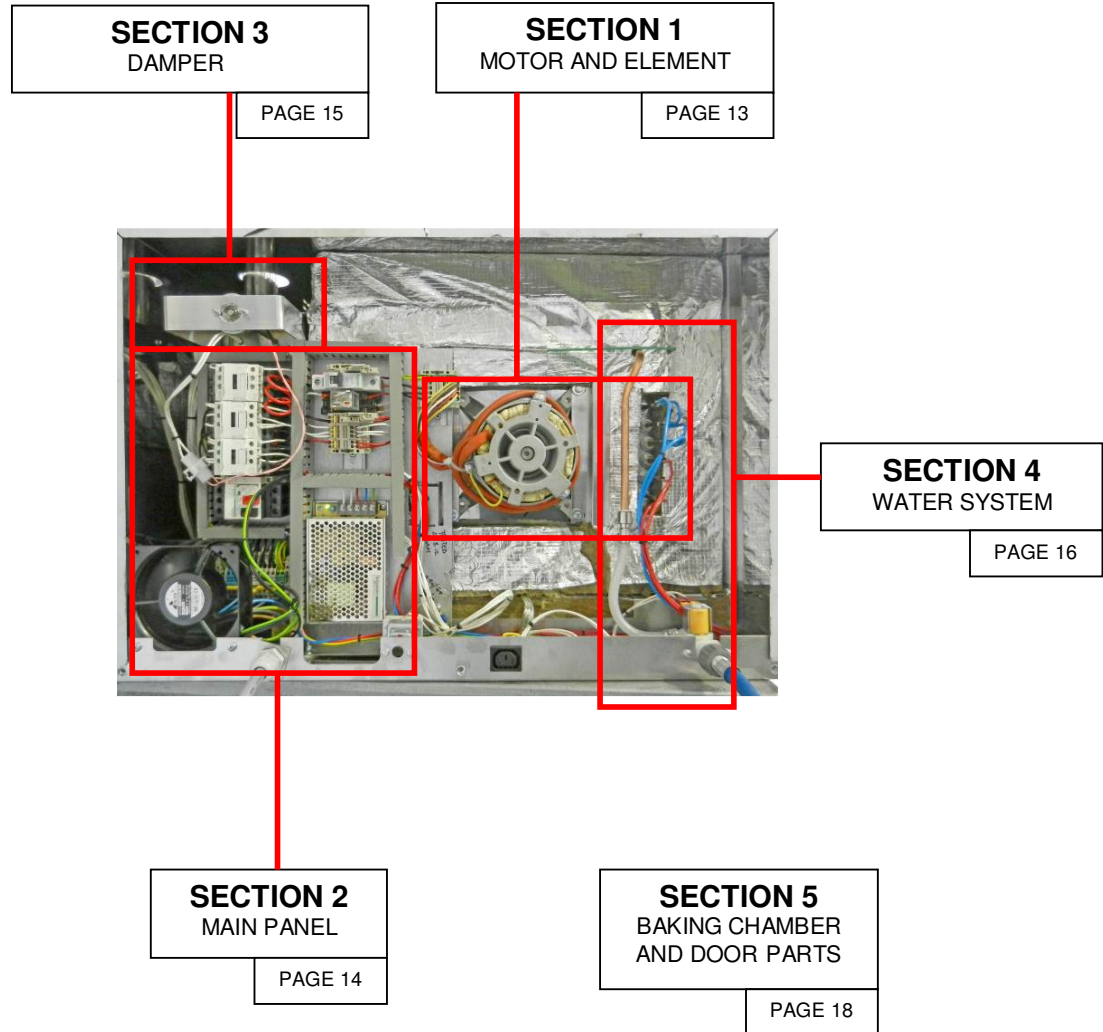
GASKET
Pt. No.B721-67-008



GLASS AND FRAME
Pt. No.B721-67-010 Pt. No.B721-67-009

PART 2 4/5 TRAY 18 X 30 OVEN SPARES SECTION

FG159

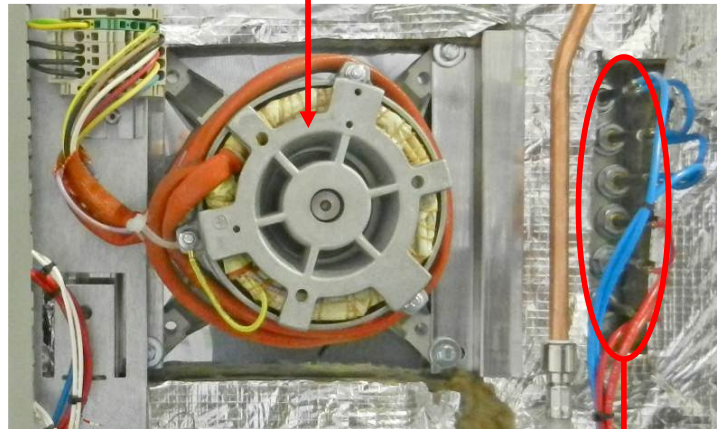


PART NUMBERS REFER TO DRAWING M159E25-75000 IN ELECTRICAL MANUAL

FG159

PART 10

FAN MOTOR UNIT – B720-74-001



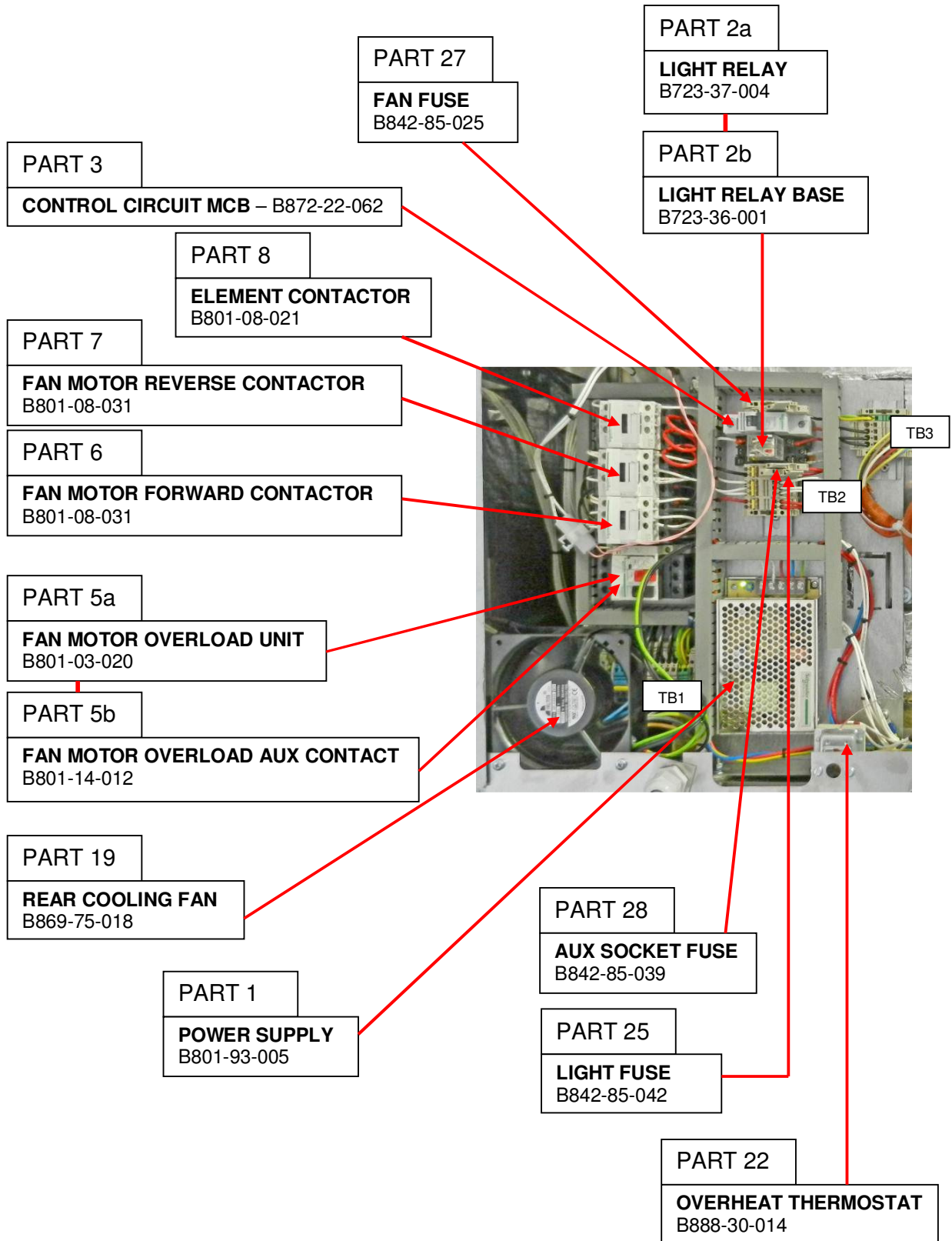
PART 11

**HEATING ELEMENT – B847-04-068 = 240volts
B847-04-073 = 220volts**

PART NUMBERS REFER TO DRAWING M159E25-75000 IN ELECTRICAL MANUAL

PART 2 / SECTION 2 – 4/5 TRAY 18 X 30 – MAIN PANEL

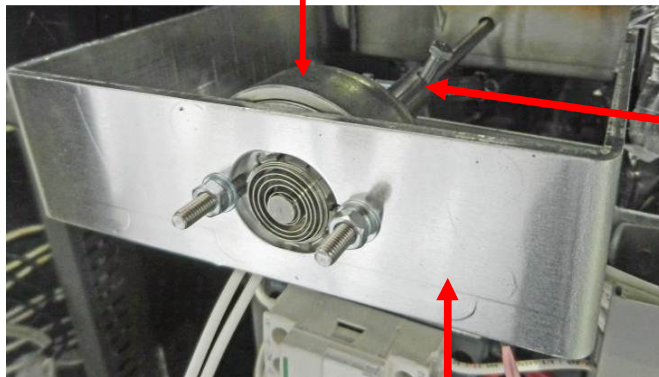
FG159



PART NUMBERS REFER TO DRAWING M159E25-75000 IN ELECTRICAL MANUAL

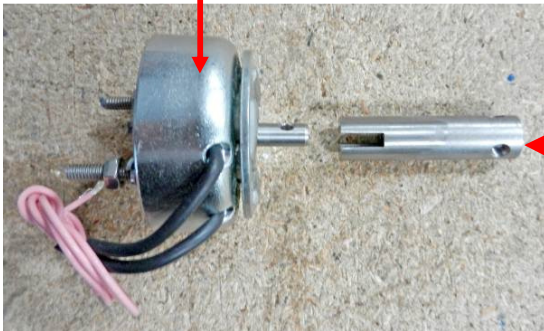
PART 9

DAMPER SOLENOID L/H OVEN B749-83-003
DAMPER SOLENOID R/H OVEN B749-83-004



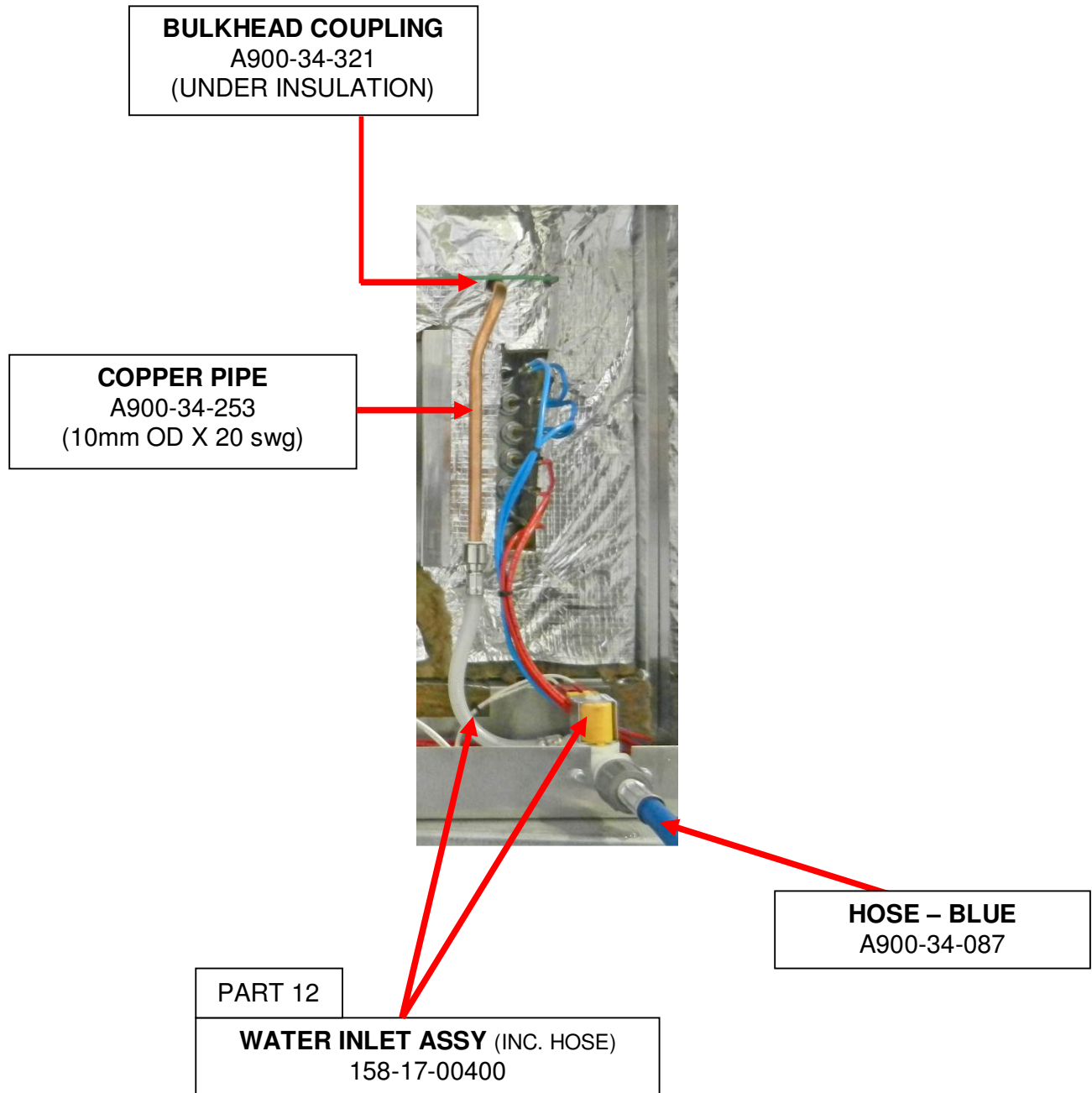
DAMPER SOLENOID BRKT
158-02-00300

COUPLING
158-02-00600



PART NUMBERS REFER TO DRAWING M159E25-75000 IN ELECTRICAL MANUAL

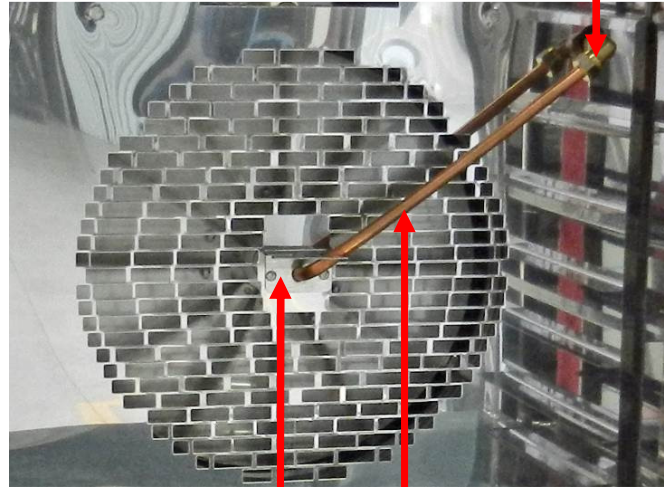
FG159



PART NUMBERS REFER TO DRAWING M159E25-75000 IN ELECTRICAL MANUAL

FG159

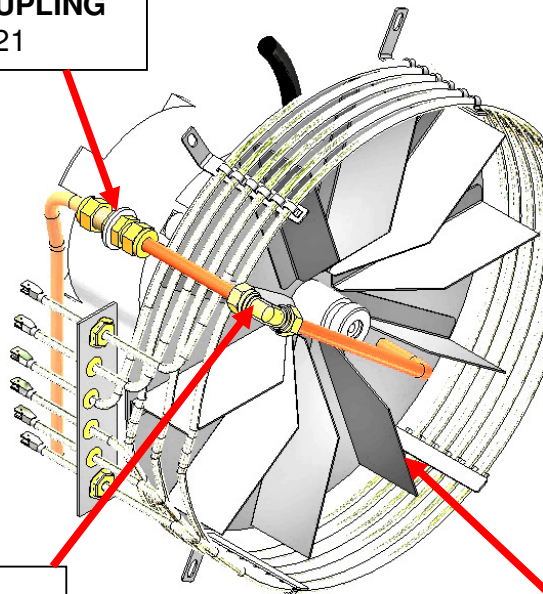
EQUAL ELBOW
A900-34-387



PIPE GUIDE BRACKET
150-01-07700

**INDIVIDUAL PART NUMBERS ARE NOT AVAILABLE FOR PIPES.
ALL PIPES MADE FROM
A900-34-253 COPPER PIPE
10mm O/D X 20swg WALL**

BULKHEAD COUPLING
A900-34-321



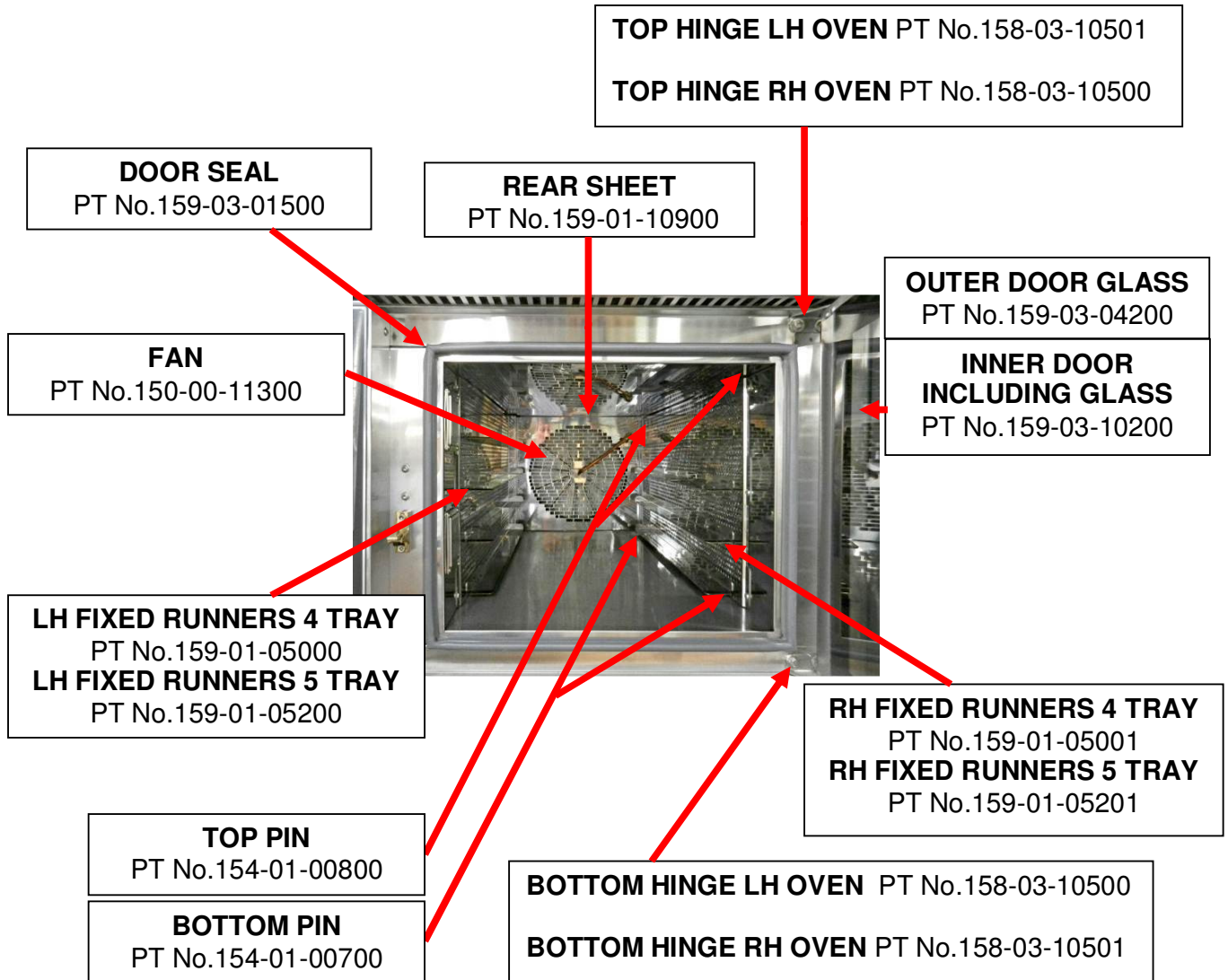
HEATING ELEMENT
B847-04-068 = 240volts
B847-04-073 = 220volts

EQUAL ELBOW
A900-34-387

FAN
150-00-11300

PART 2 / SECTION 5 – 4/5 TRAY 18 X 30 BAKING CHAMBER AND DOOR PARTS

FG159



DOOR SWITCH
PT No.B842-07-023

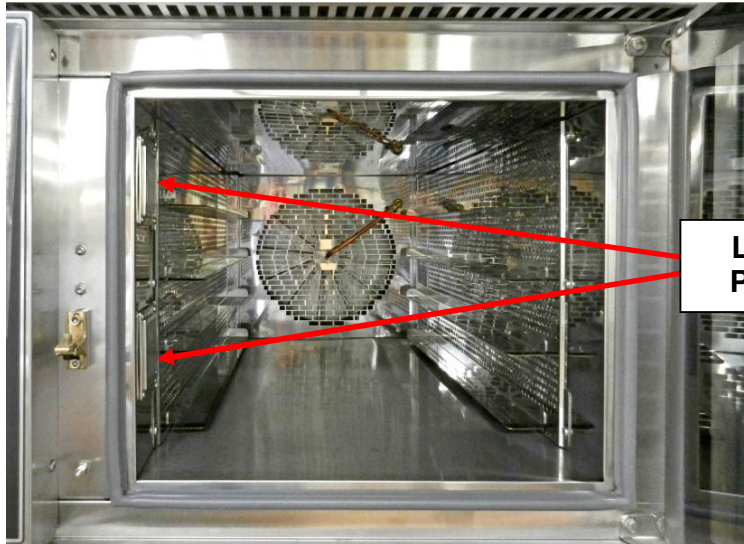


HANDLE/ CATCH ASSEMBLY
PT No.A900-27-118



COMPLETE DOOR ASSEMBLY = PT No 159-03-04000 = LH HINGE DOOR
PT No 159-03-04001 = RH HINGE DOOR

FG159



**LIGHT ASSEMBLY
PT No.B721-67-011**

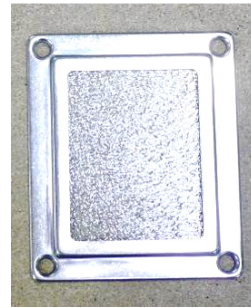
INDIVIDUAL LIGHT ASSEMBLY PARTS AVAILABLE AS BELOW



REPLACEMENT BULB = B857-94-007



GASKET
Pt No.B721-67-008

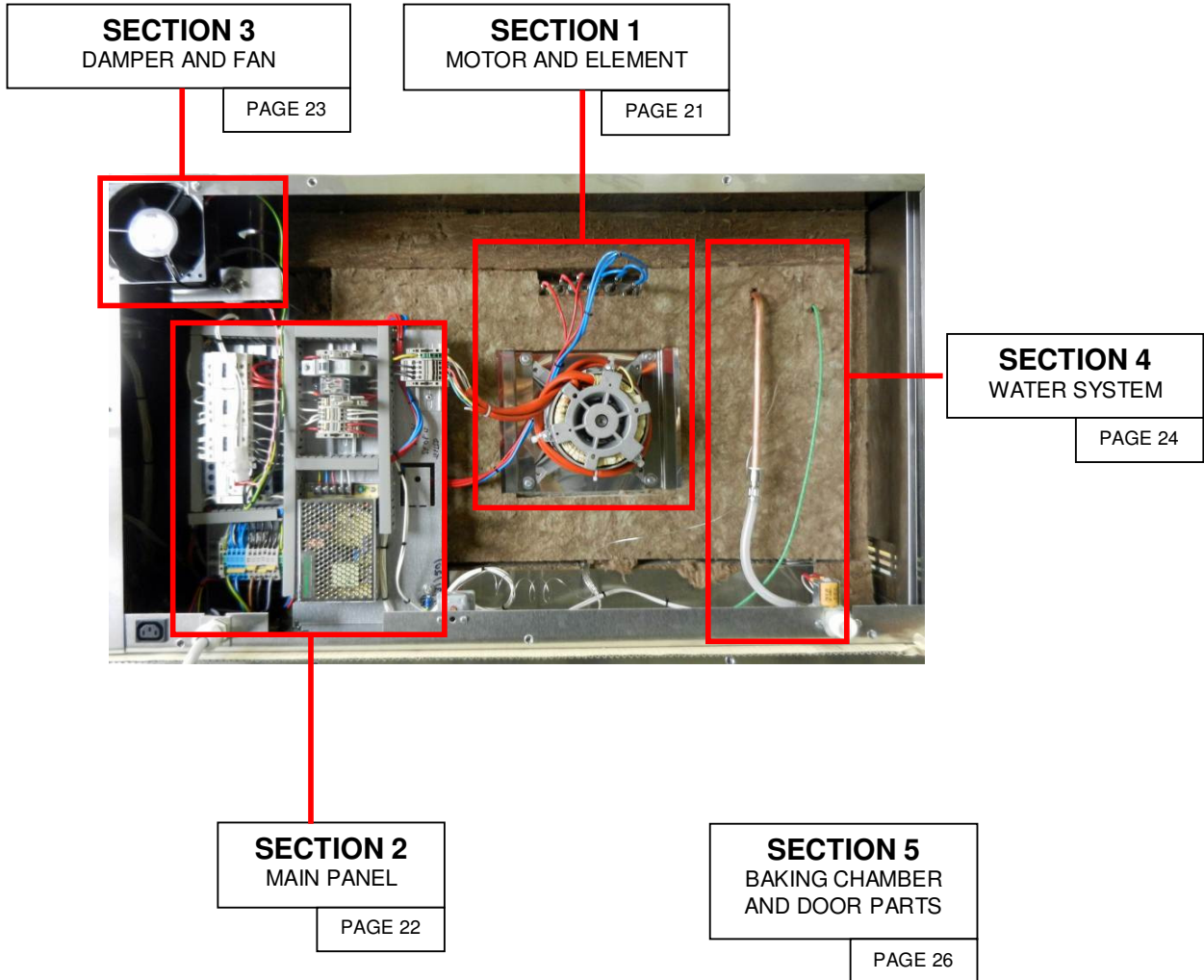


GLASS AND FRAME
Pt No.B721-67-010 Pt No.B721-67-009

DO NOT TOUCH BULBS WITH BARE HANDS.
USE A CLOTH OR GLOVES TO STOP ANY MARKS THAT
WILL CAUSE HOT SPOTS AND PREMATURE BULB FAILURE.

PART 3 4/5 TRAY 60 X 40 OVEN SPARES SECTION

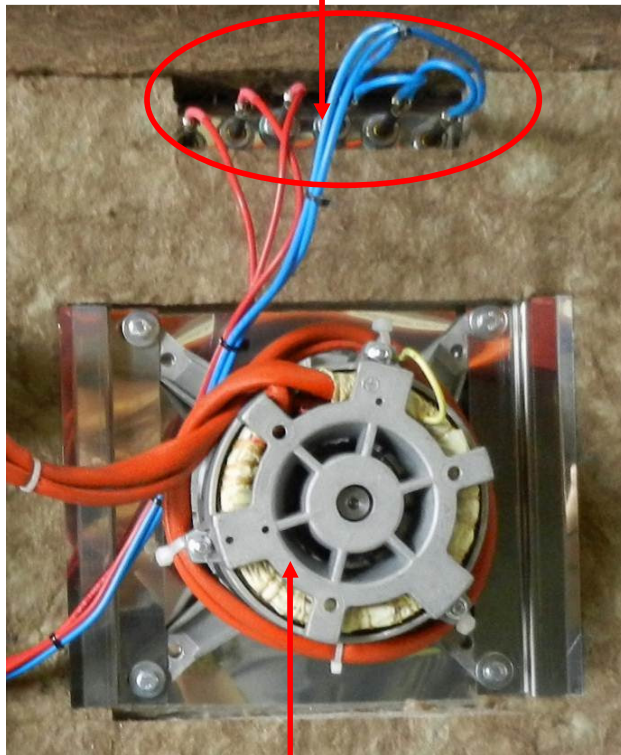
FG158



FG158

PART 11

HEATING ELEMENT – B847-04-067 = 240volts
B847-04-074 = 220volts



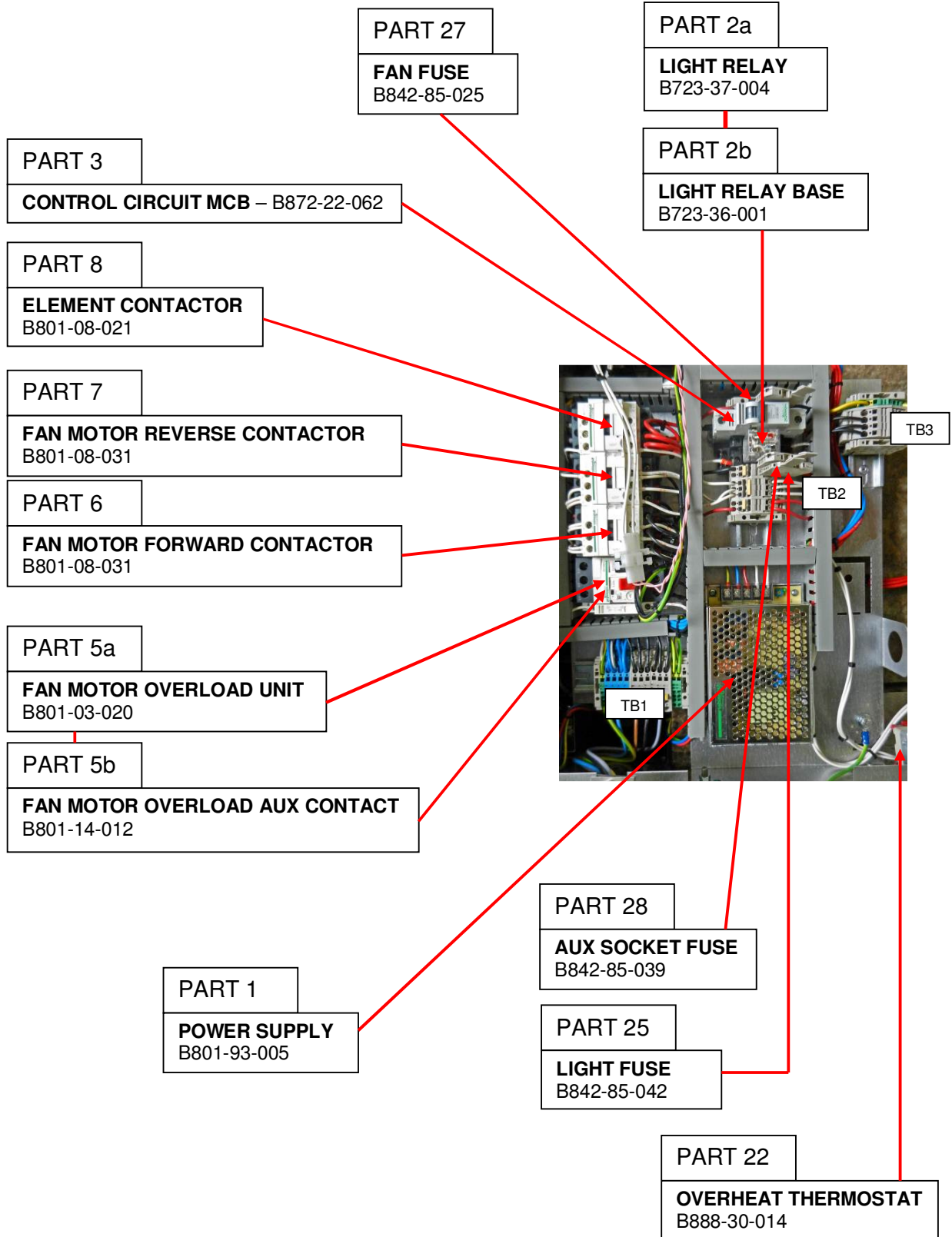
PART 10

FAN MOTOR UNIT – B720-74-001

PART NUMBERS REFER TO DRAWING M158E25-75200 IN ELECTRICAL MANUAL

PART 3 / SECTION 2 – 4/5 TRAY 60 X 40 – MAIN PANEL

FG158

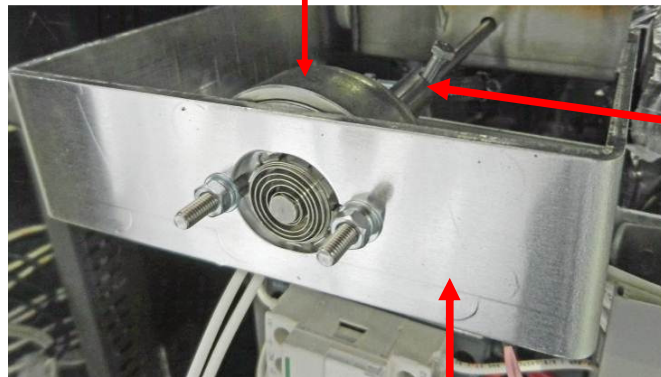


PART NUMBERS REFER TO DRAWING M158E25-75200 IN ELECTRICAL MANUAL

FG158

PART 9

DAMPER SOLENOID L/H OVEN B749-83-003
DAMPER SOLENOID R/H OVEN B749-83-004



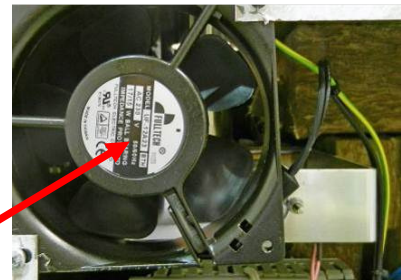
DAMPER SOLENOID BRKT
158-02-00300



COUPLING
158-02-00600

PART 19

REAR COOLING FAN
B869-75-018

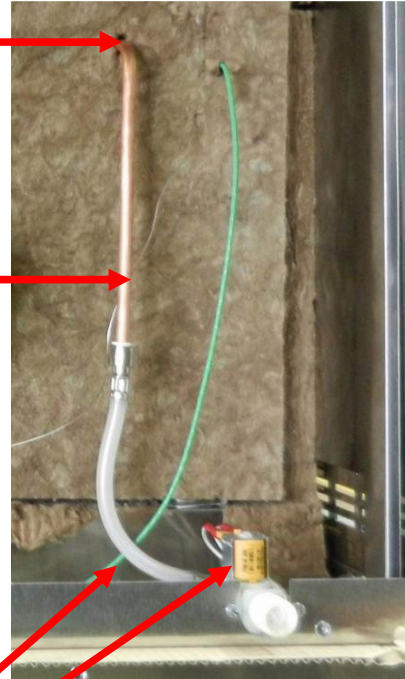


PART NUMBERS REFER TO DRAWING M159E25-75200 IN ELECTRICAL MANUAL

FG158

BULKHEAD COUPLING
A900-34-321
(UNDER INSULATION)

COPPER PIPE
A900-34-253
(10mm OD X 20 swg)



PART 12

WATER INLET ASSY (INC. HOSE)
158-17-00400

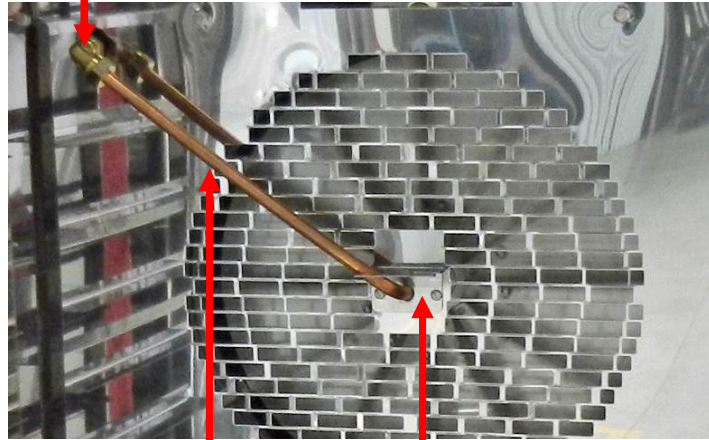
HOSE – BLUE (NOT SHOWN)
A900-34-087

PART NUMBERS REFER TO DRAWING M159E25-75200 IN ELECTRICAL MANUAL

PART 3 / SECTION 4 – 4/5 TRAY 60 X 40 – WATER/STEAM SYSTEM

FG158

EQUAL ELBOW
A900-34-387

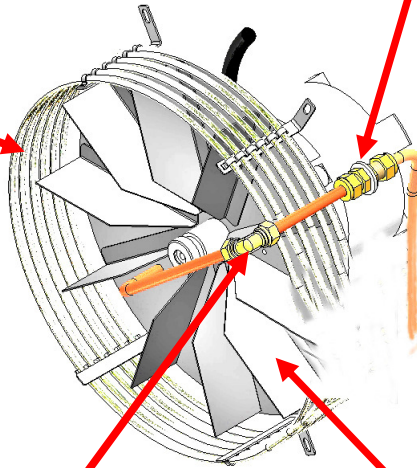


INDIVIDUAL PART NUMBERS ARE NOT AVAILABLE FOR PIPES. ALL PIPES MADE FROM A900-34-253 COPPER PIPE 10mm O/D X 20swg WALL

PIPE GUIDE BRACKET
150-01-07700

HEATING ELEMENT
B847-04-067 = 240volts
B847-04-074 = 220volts

BULKHEAD COUPLING
A900-34-321

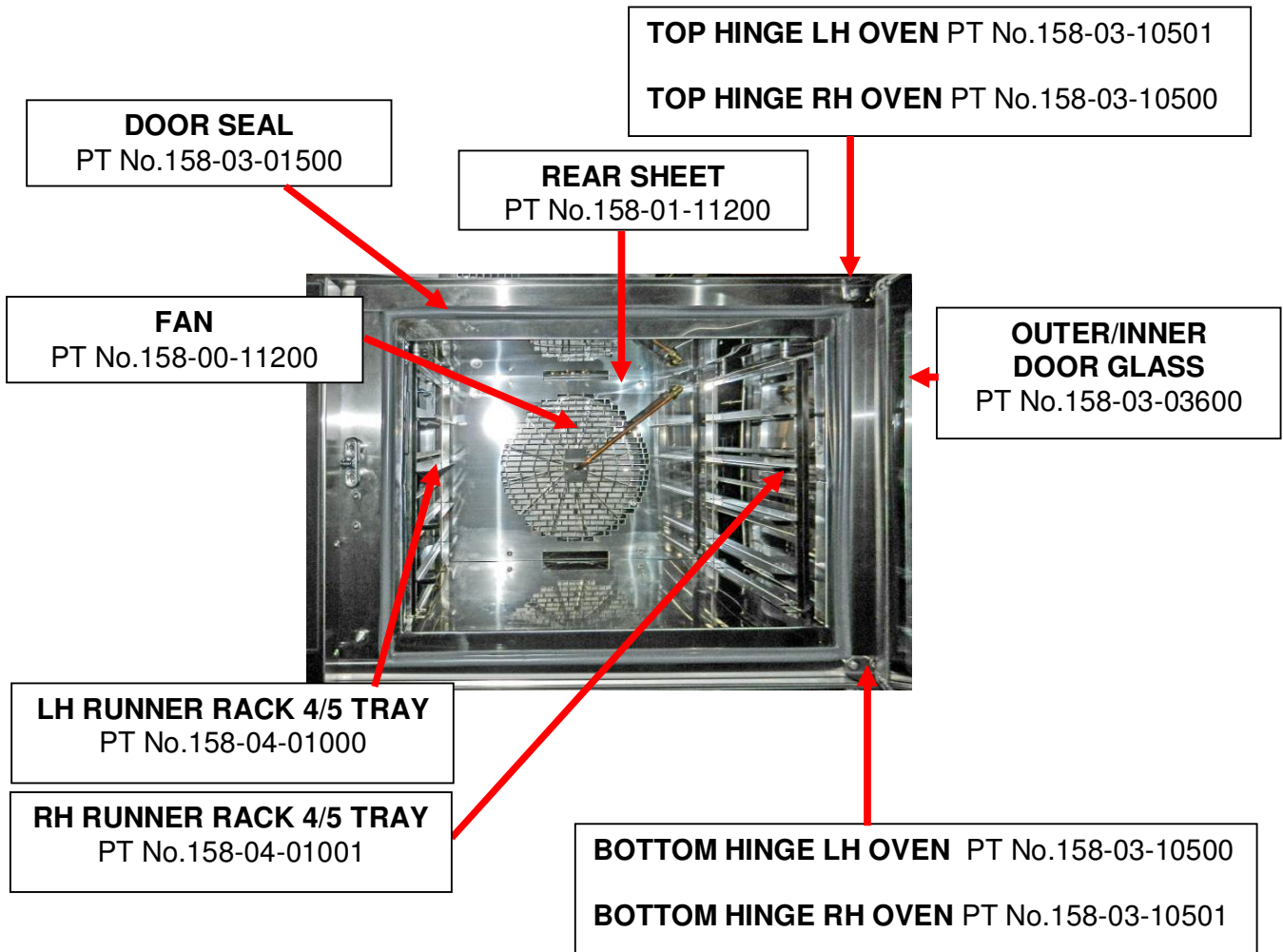


EQUAL ELBOW
A900-34-387

FAN
150-00-11200

PART 3 / SECTION 5 – 4/5 TRAY 60 X 40 BAKING CHAMBER AND DOOR PARTS

FG158



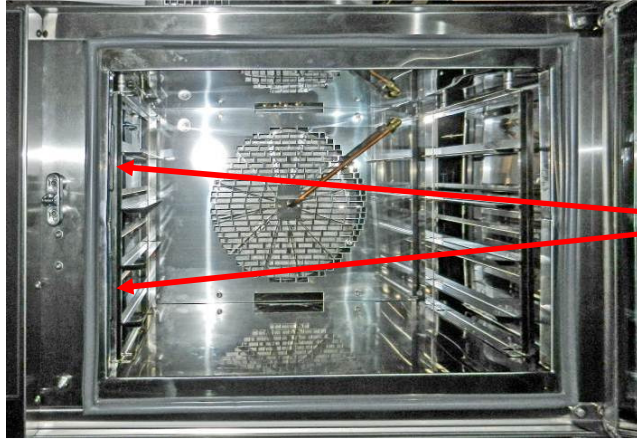
DOOR SWITCH
PT No.B842-07-023



HANDLE/ CATCH ASSEMBLY
PT No.A900-27-171

COMPLETE DOOR ASSEMBLY = PT No 158-03-03400 = LH HINGE DOOR
PT No 158-03-03401 = RH HINGE DOOR

FG158



**LIGHT ASSEMBLY
PT No.B721-67-011**

INDIVIDUAL LIGHT ASSEMBLY PARTS AVAILABLE AS BELOW

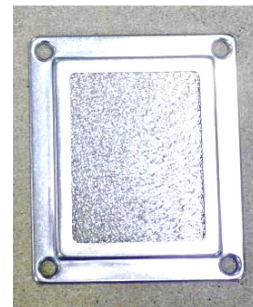


REPLACEMENT BULB = B857-94-007



GASKET

Pt No.B721-67-008



GLASS AND FRAME

Pt No.B721-67-010

Pt No.B721-67-009

DO NOT TOUCH BULBS WITH BARE HANDS.

USE A CLOTH OR GLOVES TO STOP ANY MARKS THAT
WILL CAUSE HOT SPOTS AND PREMATURE BULB FAILURE.

PART 4 4/5 TRAY 40 X 60 OVEN SPARES SECTION

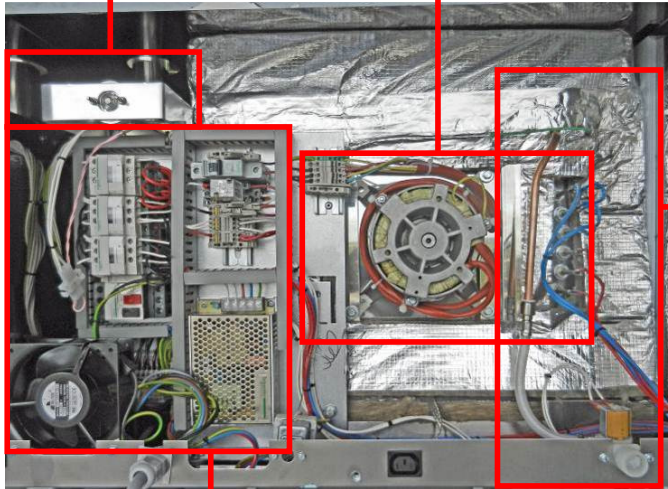
FG153

SECTION 3
DAMPER

PAGE 31

SECTION 1
MOTOR AND ELEMENT

PAGE 29



SECTION 4
WATER SYSTEM

PAGE 32

SECTION 2
MAIN PANEL

PAGE 30

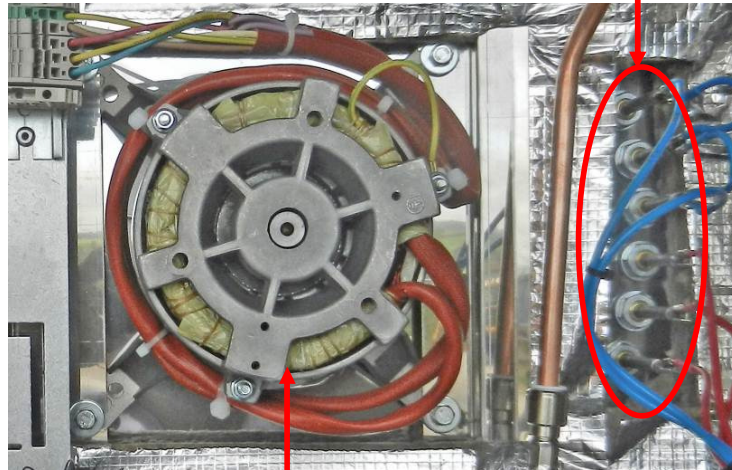
SECTION 5
BAKING CHAMBER
AND DOOR PARTS

PAGE 34

FG153

PART 11

HEATING ELEMENT – B847-04-067 = 240volts
B847-04-074 = 220volts



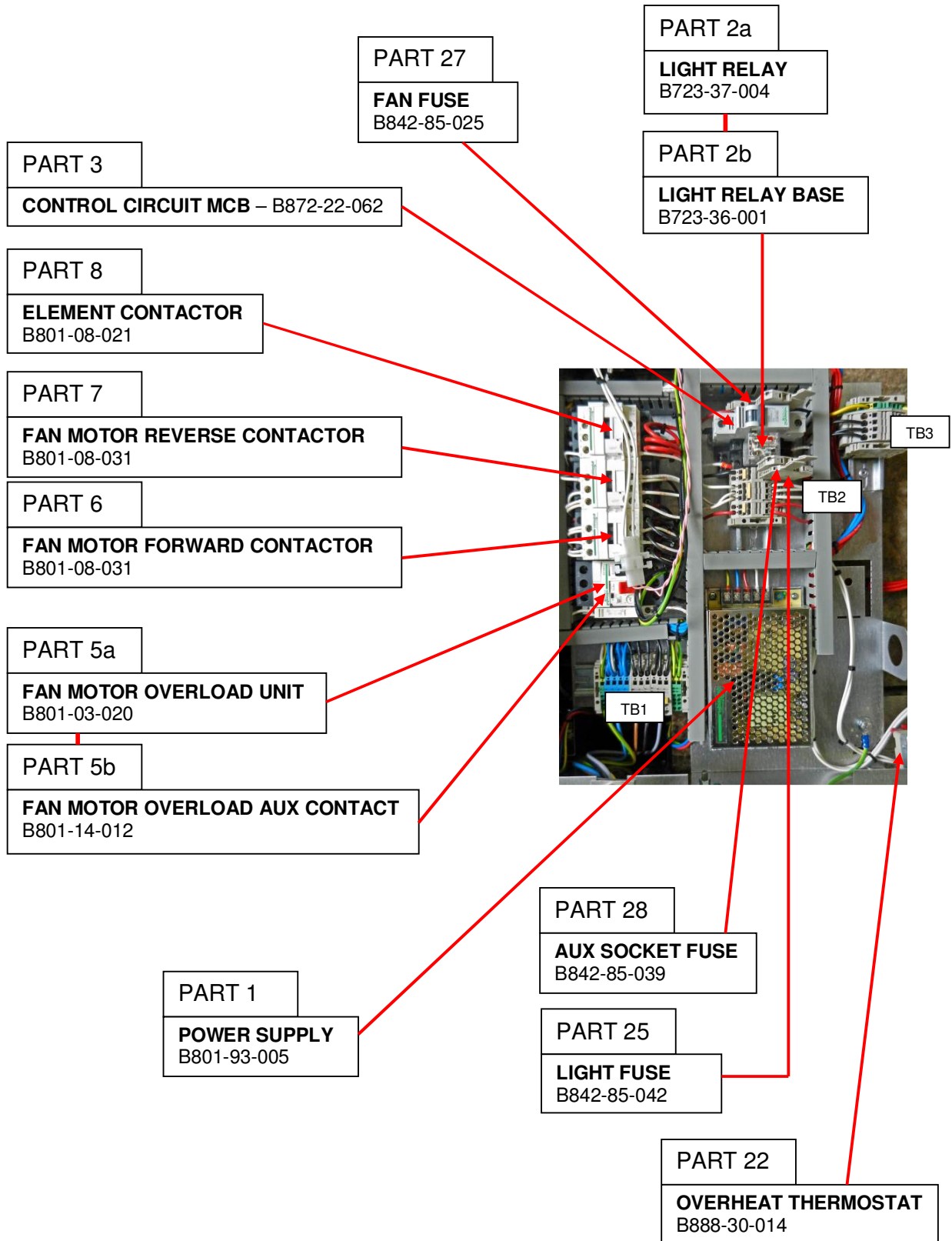
PART 10

FAN MOTOR UNIT – B720-74-001

PART NUMBERS REFER TO DRAWING M158E25-75200 IN ELECTRICAL MANUAL

PART 4 / SECTION 2 – 4/5 TRAY 40 X 60 – MAIN PANEL

FG153

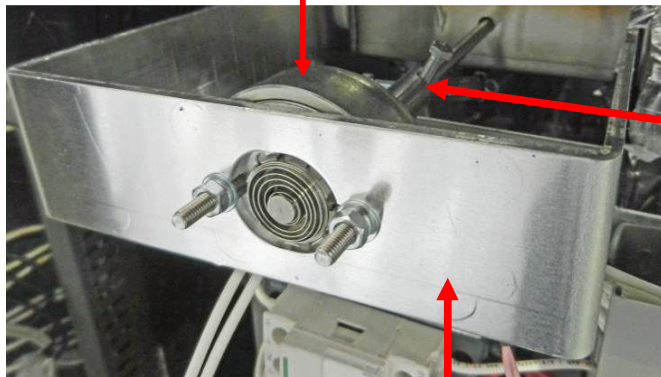


PART NUMBERS REFER TO DRAWING M158E25-75200 IN ELECTRICAL MANUAL

FG153

PART 9

DAMPER SOLENOID L/H OVEN B749-83-003
DAMPER SOLENOID R/H OVEN B749-83-004



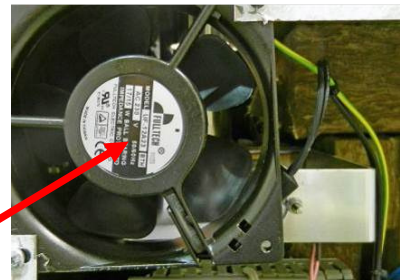
DAMPER SOLENOID BRKT
158-02-00300



COUPLING
158-02-00600

PART 19

REAR COOLING FAN
B869-75-018



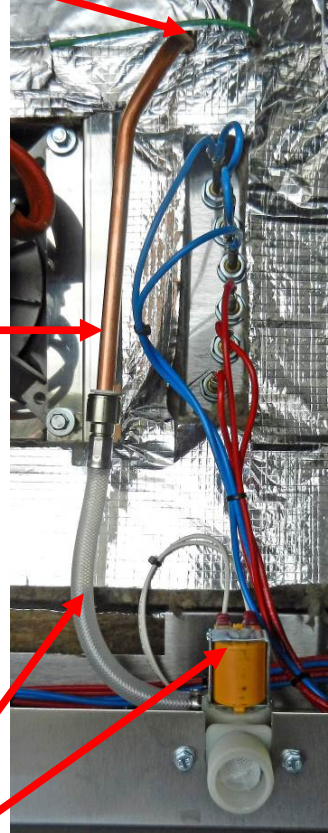
PART NUMBERS REFER TO DRAWING M158E25-75200 IN ELECTRICAL MANUAL

PART 4 / SECTION 4 – 4/5 TRAY 40 X 60 – WATER/STEAM SYSTEM

FG153

BULKHEAD COUPLING
A900-34-321
(UNDER INSULATION)

COPPER PIPE
A900-34-253
(10mm OD X 20 swg)



PART 12

WATER INLET ASSY (INC. HOSE)
158-17-00400

HOSE – BLUE (NOT SHOWN)
A900-34-087

PART NUMBERS REFER TO DRAWING M158E25-75200 IN ELECTRICAL MANUAL

PART 4 / SECTION 4 – 4/5 TRAY 40 X 60 – WATER/STEAM SYSTEM

FG153

EQUAL ELBOW
A900-34-387

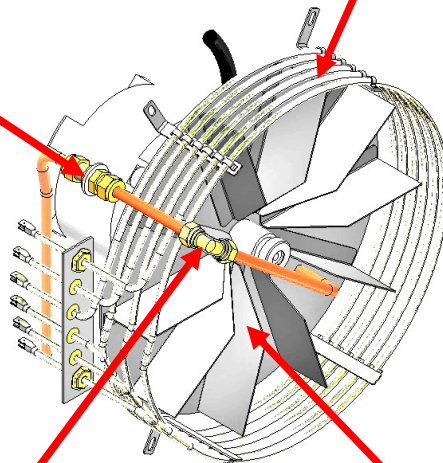


INDIVIDUAL PART NUMBERS ARE NOT AVAILABLE FOR PIPES. ALL PIPES MADE FROM A900-34-253 COPPER PIPE 10mm O/D X 20swg WALL

PIPE GUIDE BRACKET
150-01-07700

BULKHEAD COUPLING
A900-34-321

HEATING ELEMENT
B847-04-067 = 240volts
B847-04-074 = 220volts

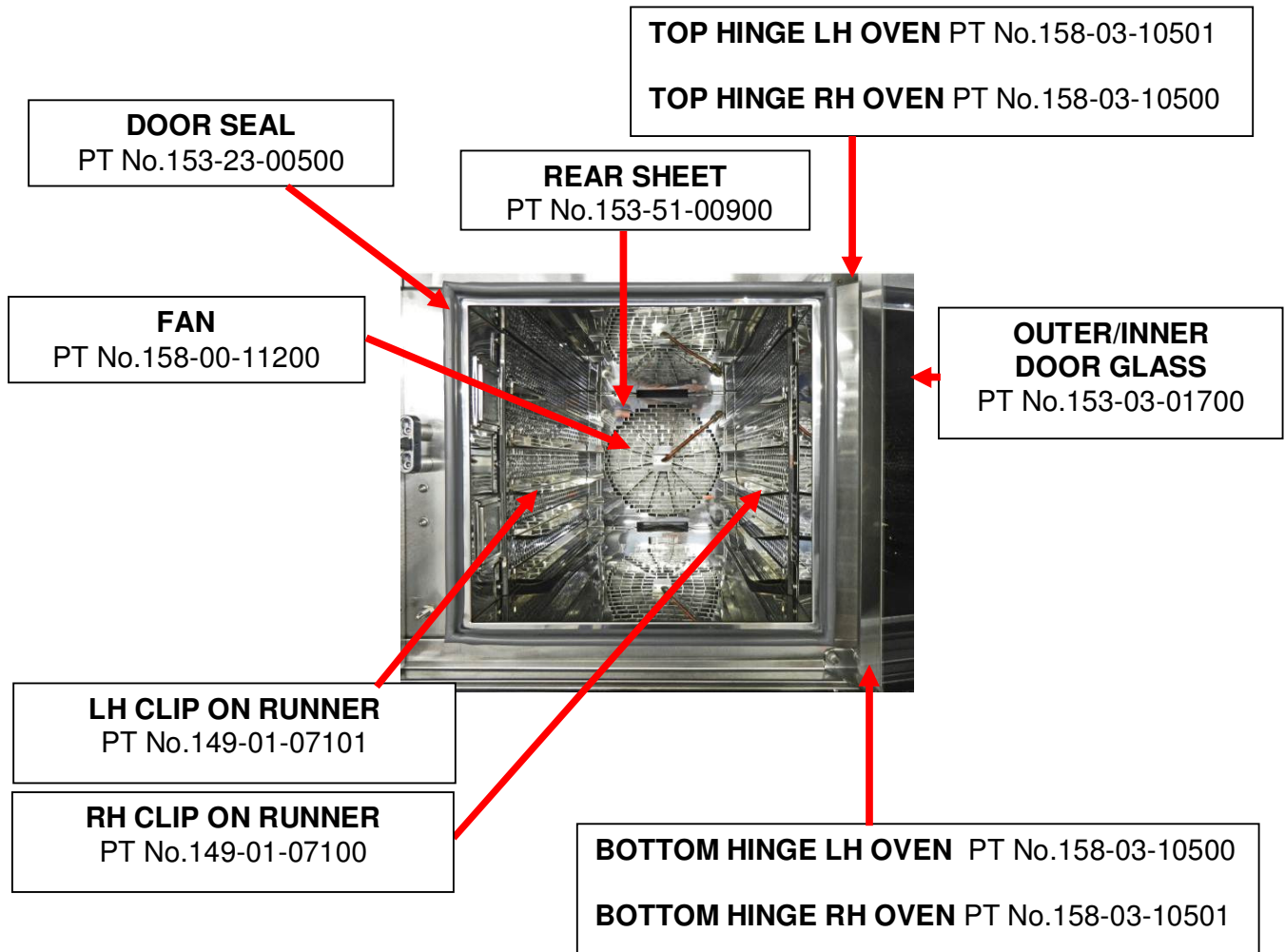


EQUAL ELBOW
A900-34-387

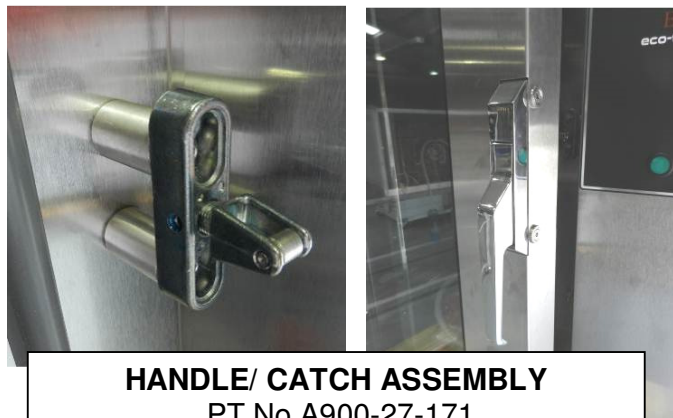
FAN
150-00-11200

PART 4 / SECTION 5 – 4/5 TRAY 40 X 60 BAKING CHAMBER AND DOOR PARTS

FG153



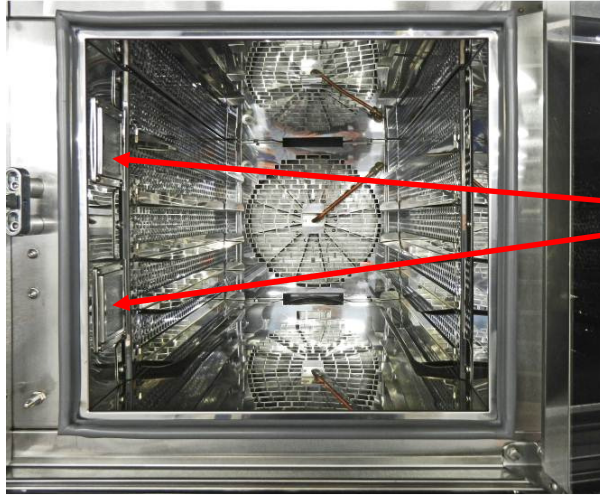
DOOR SWITCH
PT No.B842-07-023



HANDLE/ CATCH ASSEMBLY
PT No.A900-27-171

COMPLETE DOOR ASSEMBLY = PT No 153-03-01200 = LH HINGE DOOR
PT No 153-03-01201 = RH HINGE DOOR

FG153



**LIGHT ASSEMBLY
PT No.B721-67-011**

INDIVIDUAL LIGHT ASSEMBLY PARTS AVAILABLE AS BELOW

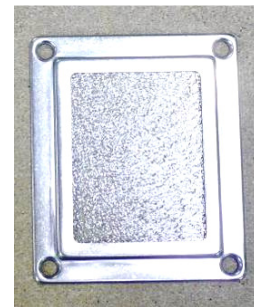


REPLACEMENT BULB = B857-94-007



GASKET

Pt No.B721-67-008



GLASS AND FRAME

Pt No.B721-67-010

Pt No.B721-67-009

DO NOT TOUCH BULBS WITH BARE HANDS.

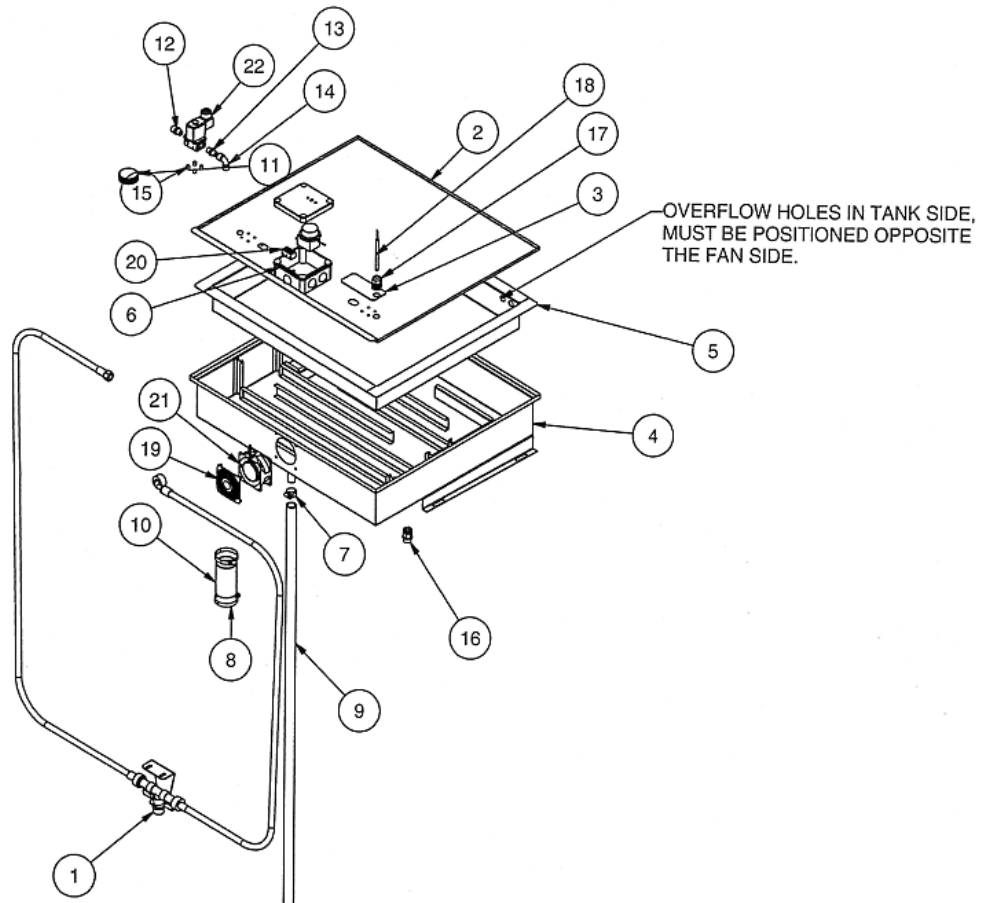
USE A CLOTH OR GLOVES TO STOP ANY MARKS THAT WILL
CAUSE HOT SPOTS AND PREMATURE BULB FAILURE.

PART 5

CONDENSER INFORMATION

CODES FGI50-AC3, FGI50-AC5, FGI55-X38, FGI58-AC1, FGI58-AC3, FGI58-AC4, FGI59-AC1

COMMON CONDENSER UNIT MAIN PARTS FGI50-AC3



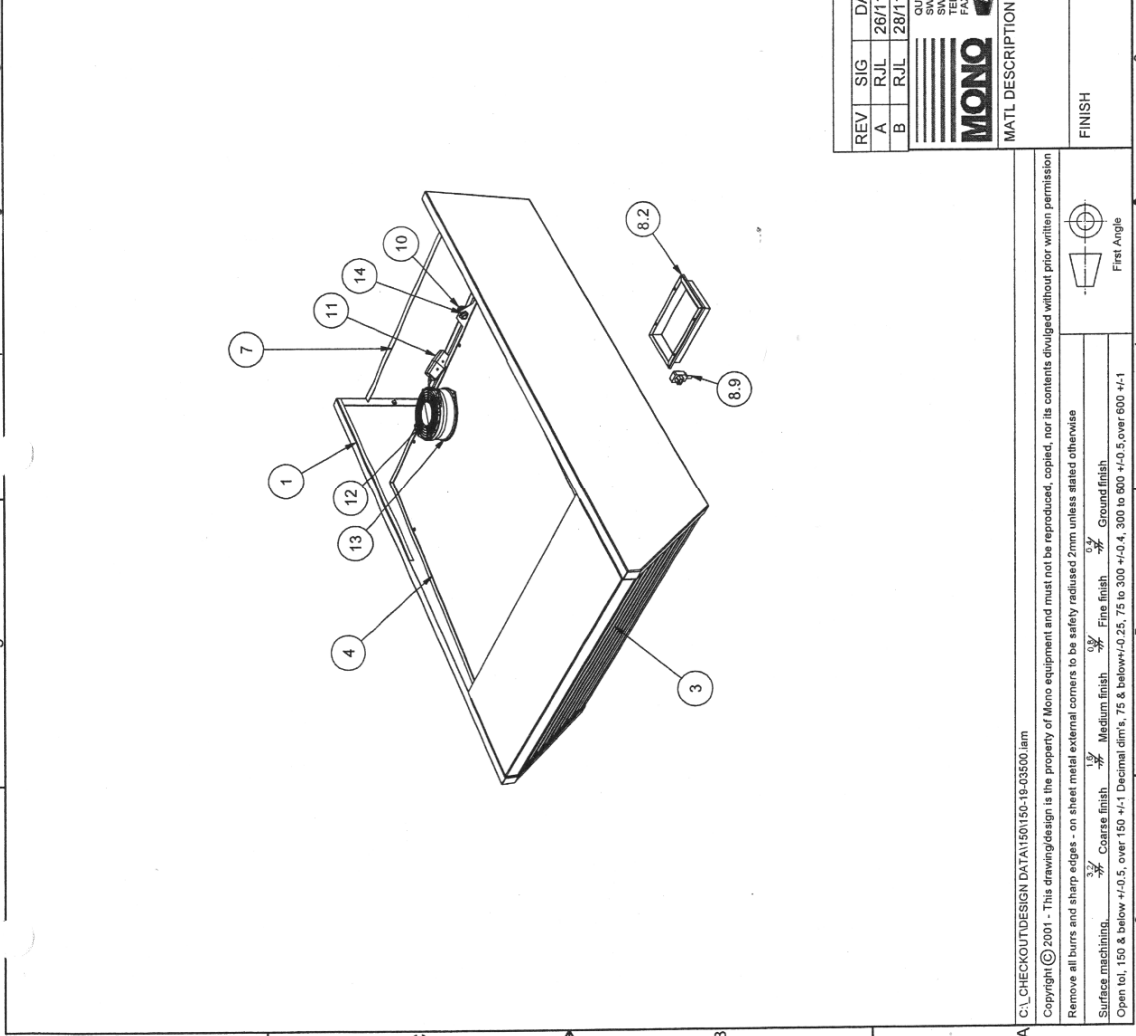
PART NUMBERS ON NEXT PAGE

ITEM	PART No.	DESCRIPTION	QTY
①	150-07-01300	INLET WATER CONTROL UNIT	1
②	150-19-01700	TOP SHEET	1
③	150-19-02300	COVER PLATE	1
④	150-19-02600	BASE TRAY	1
⑤	150-19-02700	WATER TANK	1
⑥	150-25-07100	JUNCTION BOX	1
⑦	A900-01-196	WORM DRIVE CLIP	1
⑧	A900-01-271	WORM DRIVE CLIP	2
⑨	A900-23-004	DRAIN TUBE (2 METRES)	1
⑩	A900-23-027	FLEXIBLE TUBE	1
⑪	A900-27-187	PLUG INSERT	1
⑫	A900-34-191	REDUCER ¼" BSP MALE X 3/8" BSPT MALE	1
⑬	A900-34-244	REDUCER ¼" BSP MALE X ¼" BSPT MALE	1
⑭	A900-34-245	ELBOW	1
⑮	B811-33-001	SPACER	4
⑯	B839-17-003	CABLE GLAND TYPE 251	1
⑰	B842-17-005	CABLE GLAND TYPE 206-6096	1
⑱	B842-30-003	THERMOSTAT	1
⑲	B842-40-002	FAN GUARD	1
⑳	B842-50-005	PORCELAIN CONNECTING BLOCK	1
㉑	B869-75-003	FAN	1
㉒	B867-83-011	SOLENOID VALVE	1

OTHER VERSIONS THAT MAY BE FITTED

FG150-AC5

ITEM	PART NUMBER	DESCRIPTION	QTY
1	150-19-03600	CANOPY MAIN FAB	1
2	159-14-02100	CONDENSER TANK FAB	1
3	159-14-02800	CANOPY GRILL	1
4	159-14-03600	CONDENSER TOP COVER	1
5	159-14-03700	FLEXIBLE CONNECTING DUCT (A900-23-027) RH OVEN	1
6	159-14-03701	FLEXIBLE CONNECTION DUCT (A900-23-027) LH OVEN	1
7	159-14-03800	REAR GUARD	1
8	159-14-04000	EVAPORATOR BOX	1
8.1	159-14-04100	EVAPORATOR BASE	1
8.2	159-14-04200	EVAPORATOR TRAY	1
8.3	159-14-04600	INSULATION BLANKET (A900-32-037)	1
8.4	A900-03-715	SCREW PAN HD SLOT M4x12LG STAIN. ST	4
8.5	B802-04-001	240 V 20 W MICA HEATER PAD	1
8.6	B839-17-004	CABLE GLAND TYPE 250	2
8.7	B842-50-009	CERAMIC CONNECTOR BLOCK (2 WAY)	1
8.8	B886-28-009	LOCKNUT M16	2
8.9	B970-25-002	ANGLED MALE CONNECTOR	1
9	A900-01-271	WORM DRIVE CLIP	2
10	B839-17-004	CABLE GLAND TYPE 250	1
11	B849-64-002	CONNECTOR-IN LINE LCP103	1
12	B869-40-001	Fan Finger Guard 51019-2-4039	1
13	B869-75-032	FAN-TROPICALIZED (UF-15KM23 BTHF)	1
14	B886-28-009	LOCKNUT M16	1



REV	SIG	DATE	DESCRIPTION	ECN
A	RJL	26/11/2007	DRAIN TUBE AND FIXING TRAY AND CABLE TIES REMOVED	3100
B	RJL	28/11/2007	FAN B869-75-032 WAS B869-75-001	3091

MONO QUEENSWAY WEST IND 6ST SWANSEA SA5 4EB TEL 01792 551234 FAX 01792 551016 FOODSERVICE GROUP		TITLE CONDENSER/CANOPY-FG150 AC5
MATL DESCRIPTION (MONO REF.)	AG	PURCHASE ORDER NO WORKS ORDER NO.
FINISH	MATL QTY	DATE
		27/07/2007
		SHEET SIZE
		A3
		DRG NO
		M150-19-03500
		REV
		B

A_C\CHECKOUT\DESIGN DATA\150-19-03500.dwg

Copyright © 2001 - This drawing/design is the property of Mono equipment and must not be reproduced, copied, nor its contents divulged without prior written permission

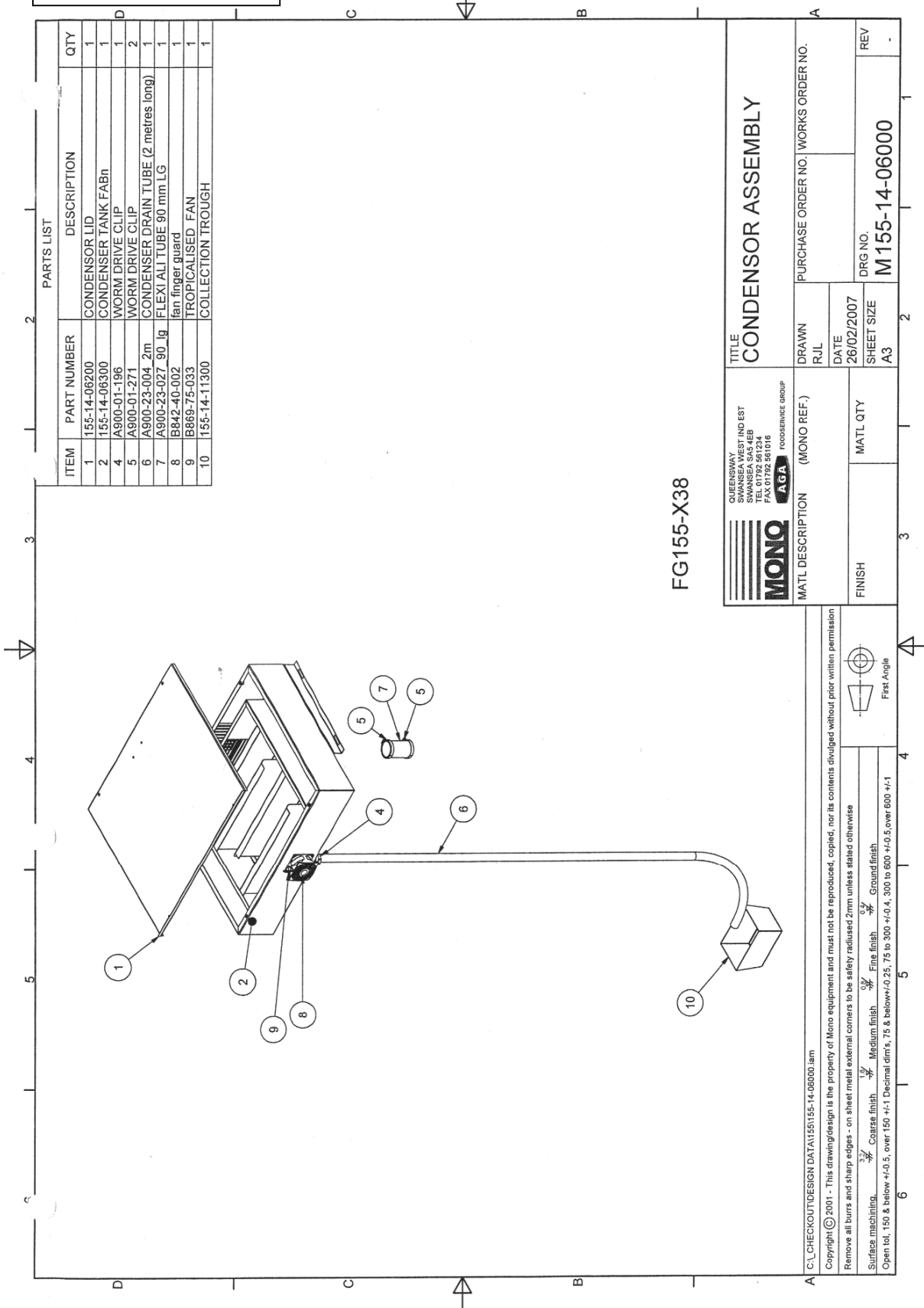
Remove all burrs and sharp edges - on sheet metal external corners to be safely radiused 2mm unless stated otherwise

Surface machining: $\frac{3}{16}$ Coarse finish $\frac{1}{16}$ Medium finish $\frac{1}{32}$ Fine finish $\frac{1}{64}$ Ground finish

Open tol: 150 & below ± 0.5 , over 150 ± 1 Decimal dim's, 75 & below ± 0.25 , 75 to 300 ± 0.4 , 300 to 600 ± 0.5 , over 600 ± 1

First Angle

FG155-X38



ITEM	PART NUMBER	DESCRIPTION	QTY
1	155-14-06200	CONDENSOR LID	1
2	155-14-06300	CONDENSER TANK FABR	1
4	A900-01-196	WORM DRIVE CLIP	1
5	A900-01-271	WORM DRIVE CLIP	2
6	A900-23-004_2m	CONDENSER DRAIN TUBE (2 metres long)	1
7	A900-23-027_90 lg	FLEXI ALI TUBE 90 mm LG	1
8	B842-40-002	fan finger guard	1
9	B869-75-033	TROPICALISED FAN	1
10	155-14-11300	COLLECTION TROUGH	1

FG155-X38

		QUEENSWAY SWANSEA WEST IND EST SWANSEA WEST IND EST TEL 01792 561234 FAX 01792 561016	
MATL DESCRIPTION (MONO REF.)		TITLE CONDENSOR ASSEMBLY	
FINISH		DRAWN R.J.L.	PURCHASE ORDER NO. WORKS ORDER NO.
MATL QTY		DATE 26/02/2007	DRG NO. M155-14-06000
REV		SHEET SIZE A3	REV

A C:\CHECKOUT\DESIGN DATA\155-14-06000.lam

Copyright © 2001 - This drawing/design is the property of Mono equipment and must not be reproduced, copied, nor its contents divulged without prior written permission

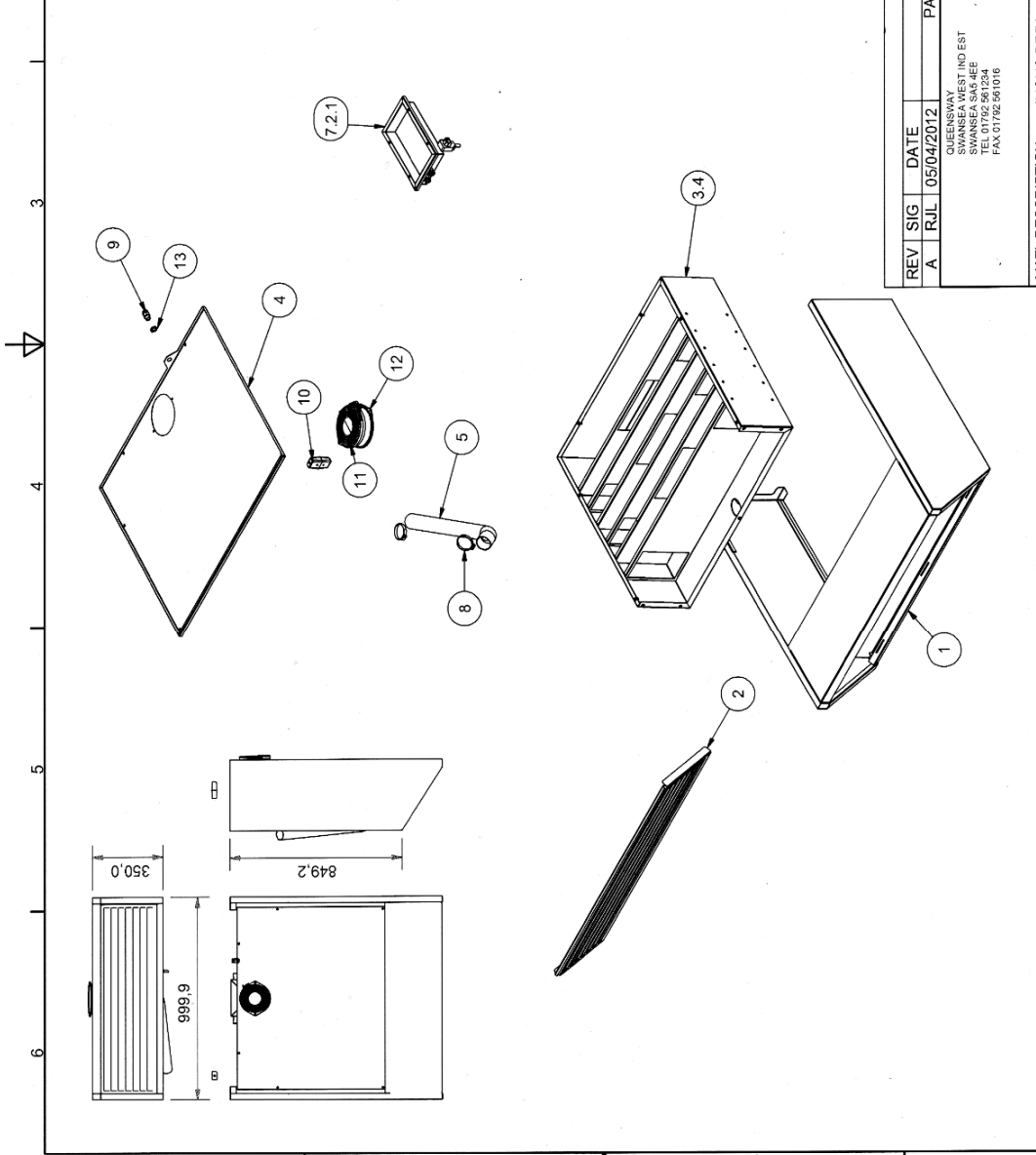
Remove all burrs and sharp edges - on sheet metal external corners to be safety radiused 2mm unless stated otherwise

Surface machining: $\frac{3}{32}$ Coarse finish $\frac{1}{16}$ Medium finish $\frac{1}{32}$ Fine finish $\frac{1}{64}$ Ground finish

Open tol, 150 & below ± 0.5 , over 150 ± 1 Decimal dims, 75 & below ± 0.25 , 75 to 300 ± 0.4 , 300 to 600 ± 0.5 , over 600 ± 1

FG158-AC1

ITEM	PART NUMBER	DESCRIPTION	QTY
1	158-14-02400	CANOPY REINFORCEMENT	1
2	158-14-03600	CANOPY GRILL	1
3	158-14-03800	CONDENSER MAIN TANK	1
3.1	158-14-04100	BAFFLE DOUBLE SQUARE CUTOUT	3
3.2	158-14-04100	BAFFLE SINGLE SQUARE CUTOUT	3
3.3	158-14-04200	CONDENSER DRAIN PIPE (22205A597005) X12 LG	1
3.4	158-14-04300	CONDENSER MAIN TANK SUPPORT BRACKET	1
3.5	158-14-04500	FLEX DUCT CONNECTING	1
3.6	158-14-05000	TUBE	1
3.7	A900-01-240	COPPER NET 4.16x17.4LG	24
3.8	A900-01-283	CONDENSER STANDLESS CONDENSER TOP COVER	1
4	158-14-04100	CONDENSER TOP COVER	1
5	158-14-04600	FLEXIBLE CONNECTING DUCT (A900-23-027)	1
7	158-14-04000	EVAPORATOR BOX	1
7.1	158-14-04100	EVAPORATOR BASE	1
7.1.1	158-14-04100	EVAPORATOR BASE	1
7.1.2	A900-01-205	MM HEX-INSERT	4
7.1.3	E500-03-024	WELD STUD MMx10 LG	2
7.2	158-14-04200	EVAPORATOR TRAY	1
7.2.1	158-14-04200	EVAPORATOR TRAY	1
7.2.2	E500-03-023	WELD STUD MMx10 LG	1
7.3	158-14-04600	INSULATION BLANKET	1
7.4	A900-03-715	SCREW PAN HD SLOTT Mx12LG STAIN ST	4
7.5	B802-04-001	240 V, 20 W MICA HEATER PAD	1
7.6	B835-17-004	CABLE GLAND TYPE 250	2
7.7	B842-50-009	CERAMIC CONNECTOR BLOCK (2 WAY)	1
7.8	B886-28-009	LOCKNUT M16	2
7.9	B970-25-002	ANGLED MALE CONNECTOR	1
8	A900-01-271	WORM DRIVE CLIP	2
9	B835-17-004	CABLE GLAND TYPE 250	1
10	B849-64-002	CONNECTOR IN LINE LCP103	1
11	B869-40-001	Fan Finger Guard 51019/2-4039	1
12	B869-75-032	PAN-TIGHTENED (UCRIM23 BT/HT)	1
13	B886-28-009	LOCKNUT M16	1



REV	SIG	DATE	DESCRIPTION	ECN
A	RLL	05/04/2012	PART 158-14-04700 REMOVED FROM ASSY	AN008-12

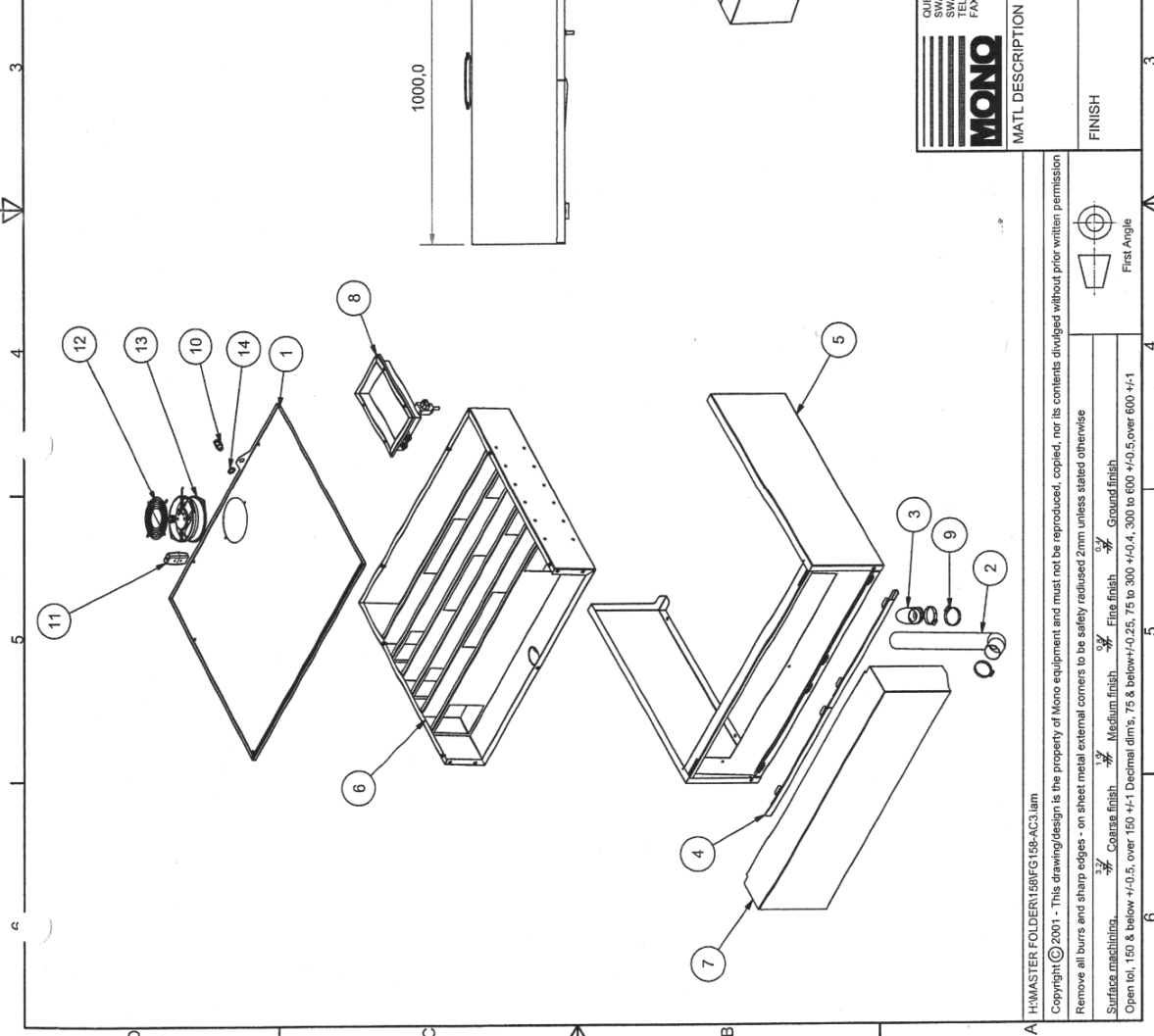
TITLE CANOPY/CONDENSER	
DRAWN RLL	PURCHASE ORDER NO. WORKS ORDER NO.
DATE 05/06/2008	DRG NO. FG158-AC1
SHEET SIZE A3	REV A

MONO REF. SWANSEA WEST IND EST SWANSEA SA454EE TEL 01792 561234 FAX 01792 561016	FINISH MATL QTY
----------------------------------------------------------------------------------------------	--------------------

H:\MASTER_FOLDER\158\FG158-AC1.dwg
 Copyright © 2001 - This drawing/design is the property of Mono equipment and must not be reproduced, copied, nor its contents divulged without prior written permission.
 Remove all burrs and sharp edges - on sheet metal external corners to be safely radiused 2mm unless stated otherwise.
 Surface machining: $\frac{0.05}{\sqrt{R}}$ Coarse finish, $\frac{0.1}{\sqrt{R}}$ Medium finish, $\frac{0.2}{\sqrt{R}}$ Fine finish, $\frac{0.4}{\sqrt{R}}$ Ground finish.
 Open tol. 150 & below ± 0.5 , over 150 ± 1 Decimal dim's, 75 to 300 ± 0.4 , 300 to 600 ± 0.5 , over 600 ± 1 .
 First Angle

FG158-AC3

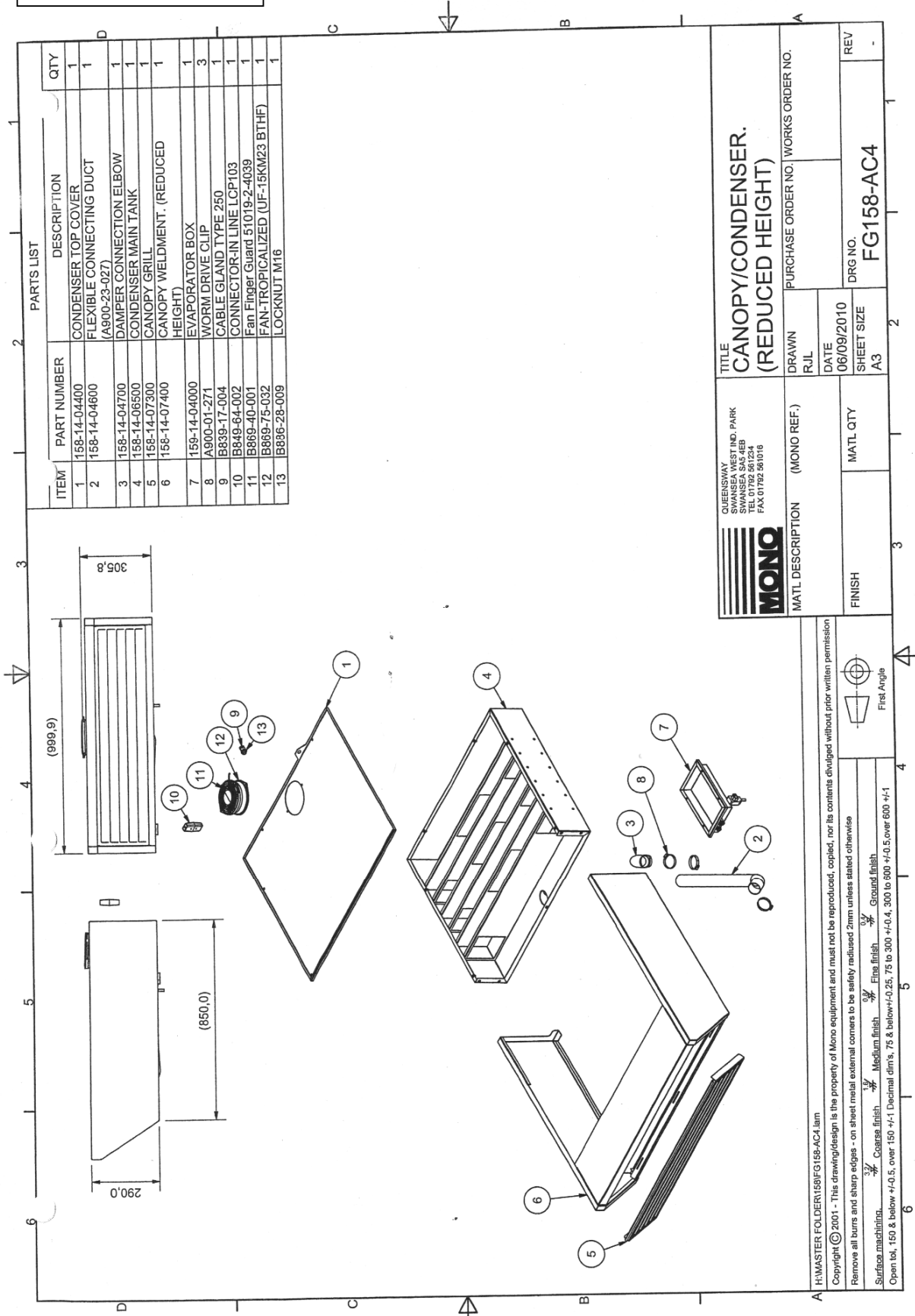
PARTS LIST			
ITEM	PART NUMBER	DESCRIPTION	QTY
1	158-14-04400	CONDENSER TOP COVER	1
2	158-14-04600	FLEXIBLE CONNECTING DUCT (A900-23-027)	1
3	158-14-04700	DAMPER CONNECTION ELBOW	1
4	158-14-05500	BAFFLE PLATE	2
5	158-14-06000	CONDENSER CANOPY WELDMENT	1
6	158-14-06500	CONDENSER MAIN TANK	1
7	158-14-06900	CANOPY FRONT	1
8	A900-01-271	EVAPORATOR BOX	1
9	A900-01-271	WORM DRIVE CLIP	3
10	B839-17-004	CABLE GLAND TYPE 250	1
11	B849-64-002	CONNECTOR-IN LINE LCP103	1
12	B869-40-001	Fan Finger Guard 51019-2-4039	1
13	B869-75-032	FAN-TROPICALIZED (UF-15KM23 BTHF)	1
14	B886-28-009	LOCKNUT M16	1



MONO QUEENSWAY 1000 WEST IND. PARK SWANSEA SAS 4EP TEL 01792 561234 FAX 01792 561016		TITLE REDUCED HEIGHT CANOPY/CONDENSER	
MATL DESCRIPTION (MONO REF.)		PURCHASE ORDER NO. WORKS ORDER NO.	
FINISH		DRAWN RJL	DATE 17/08/2010
MATL QTY		SHEET SIZE A3	
DRG NO. FG158-AC3		REV	

H:MASTER FOLDER\FG158-AC3.lam
 Copyright © 2001 - This drawing/design is the property of Mono equipment and must not be reproduced, copied, nor its contents divulged without prior written permission
 Remove all burrs and sharp edges - on sheet metal external corners to be safely radiused 2mm unless stated otherwise
 Surface machinings: $\frac{3}{32}$ Coarse finish $\frac{1}{16}$ Medium finish $\frac{1}{32}$ Fine finish $\frac{1}{64}$ Ground finish
 Open tol, 150 & below +/0.5, over 150 +/1
 Decimal dim's, 75 & below +/0.25, 75 to 300 +/0.4, 300 to 600 +/0.5, over 600 +/1
 First Angle

FG158-AC4



MONO		QUEENSWAY SWANSEA WESTIND. PARK WYVERN LANE TEL 01782 261234 FAX 01782 261016	
MATL DESCRIPTION (MONO REF.)		DRAWN R/JL	PURCHASE ORDER NO. WORKS ORDER NO.
FINISH		DATE 06/09/2010	SHEET SIZE A3
TITLE CANOPY/CONDENSER. (REDUCED HEIGHT)		DRG NO. FG158-AC4	
H:MASTER FOLDER\169\FG158-AC4.lam		REV -	

Copyright © 2004 - This drawing/design is the property of Mono equipment and must not be reproduced, copied, nor its contents divulged without prior written permission. Remove all burrs and sharp edges - on sheet metal external corners to be safely radiused 2mm unless stated otherwise.

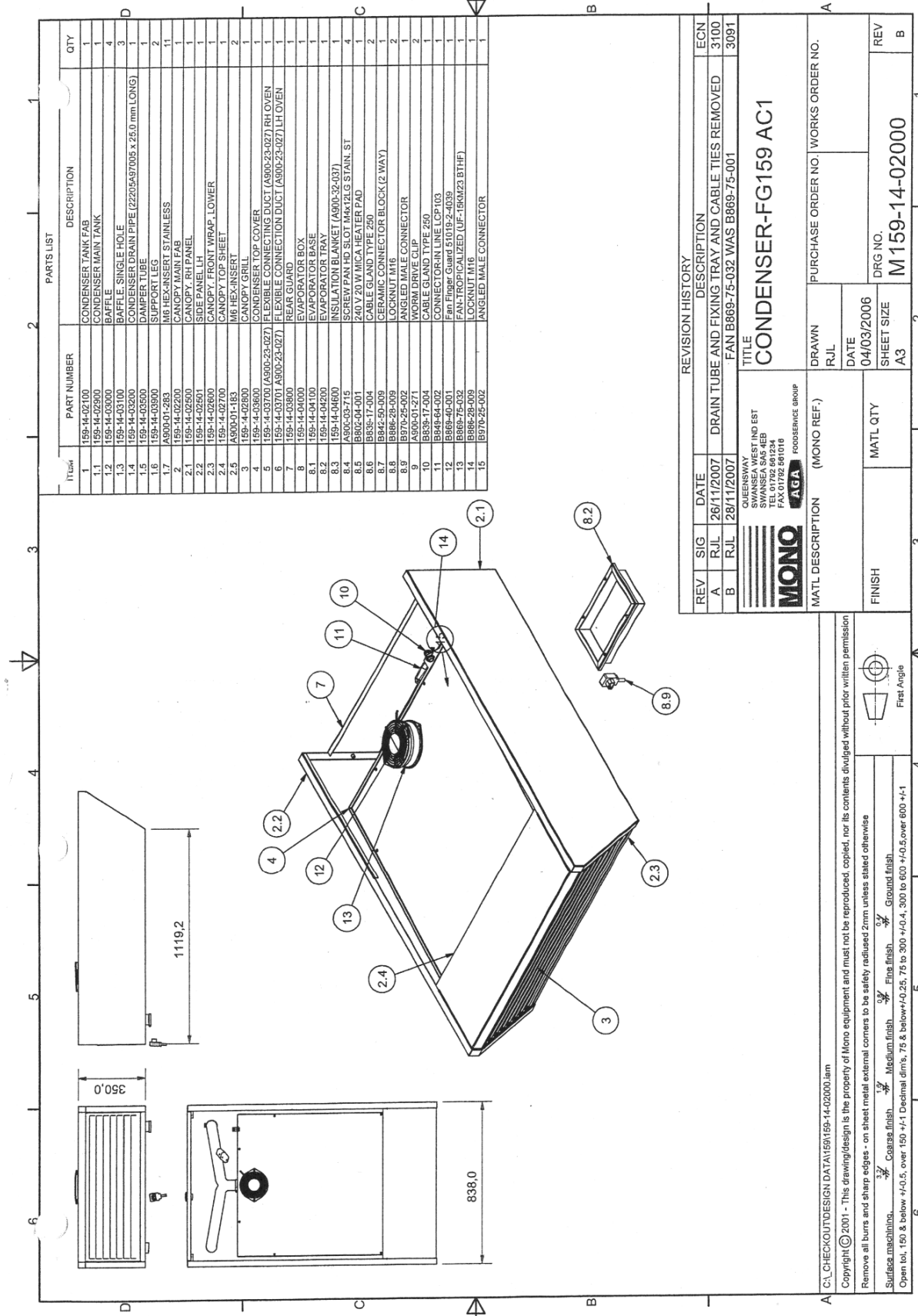
Surface machining:

- Coarse finish: $\frac{1}{32}$
- Medium finish: $\frac{1}{64}$
- Fine finish: $\frac{1}{128}$
- Ground finish: $\frac{1}{256}$

Open tol, 150 & below ± 0.5 , over 150 ± 1 Decimal dim's, 75 & below ± 0.25 , 75 to 300 ± 0.4 , 300 to 600 ± 0.5 , over 600 ± 1

First Angle

FG159-AC1



ITEM#	PART NUMBER	DESCRIPTION	QTY
1	159-14-02100	CONDENSER TANK FAB	1
1.1	159-14-02900	CONDENSER MAIN TANK	1
1.2	159-14-03000	PIPE SINGLE HOLE	4
1.3	159-14-03100	CONDENSER DRAIN PIPE (2205*97005 x 25,0 mm L ONG)	3
1.4	159-14-03200	DAMPER TUBE	2
1.5	159-14-03300	SUPPORT LEG	2
1.6	159-14-03400	M6 HEX-INSERT STAINLESS	11
1.7	A900-01-283	CANOPY MAIN FAB	1
2	159-14-02200	CANOPY, RH PANEL	1
2.1	159-14-02500	SIDE PANEL LH	1
2.2	159-14-02600	CANOPY, FRONT WRAP, LOWER	1
2.3	159-14-02700	CANOPY TOP SHEET	1
2.4	159-14-02700	M6 HEX-INSERT	2
2.5	A900-01-183	CANOPY GRILL	1
3	159-14-02800	REAR TOP COVER	1
4	159-14-02900	EVAPORATOR	1
5	159-14-03701 (A900-23-027)	FLEXIBLE CONNECTION DUCT (A900-23-027) RH OVEN	1
6	159-14-03701 (A900-23-027)	FLEXIBLE CONNECTION DUCT (A900-23-027) LH OVEN	1
7	159-14-03800	REAR GUARD	1
8	159-14-04000	EVAPORATOR BOX	1
8.1	159-14-04100	EVAPORATOR BASE	1
8.2	159-14-04200	EVAPORATOR TRAY	1
8.3	159-14-04600	INSULATION BLANKET (A900-32-037)	1
8.4	A900-03-715	SCREW PAN HD SLOT MMX12LG STAIN_ST	4
8.5	B902-04-001	240 V 20 W MICA HEATER PAD	2
8.6	B935-17-004	CABLE GLAND TYPE 250	2
8.7	B942-50-009	CERAMIC CONNECTOR BLOCK (2 WAY)	1
8.8	B986-28-009	LOCKNUT M16	2
8.9	B986-28-009	WASHER DRIVE CLIP	2
9	A900-01-271	WASHER DRIVE CLIP	2
10	B838-17-004	CABLE GLAND TYPE 250	2
11	B848-64-002	CONNECTOR LINE LCP103	1
12	B869-40-001	Fan Finger Guard 51019-2-4039	1
13	B869-75-032	FAN-TROPICALIZED (UF-19KM23 B THF)	1
14	B886-28-009	LOCKNUT M16	1
15	B970-25-002	ANGLED MALE CONNECTOR	1

REVISION HISTORY		DESCRIPTION	ECN	
REV	SIG	DATE	DESCRIPTION	ECN
A	R/JL	26/11/2007	DRAIN TUBE AND FIXING TRAY AND CABLE TIES REMOVED	3100
B	R/JL	28/11/2007	FAN B869-75-032 WAS B869-75-001	3091

TITLE		CONDENSER-FG159 AC1	
DRAWN		PURCHASE ORDER NO. / WORKS ORDER NO.	
R/JL			
DATE		04/03/2006	
SHEET SIZE		A3	
MATERIAL DESCRIPTION (MONO REF.)		M159-14-02000	
FINISH		REV B	

QUEENSWAY	FOODSERVICE GROUP
SWANSEA WEST IND EST	
SWANSEA SIA 4EB	
SWANSEA SIA 4EB	
FAX 01732 581016	

If a fault arises, please do not hesitate to contact the Customer Service Department, quoting the **machine serial number** on the silver information plate of the machine.



MONO

Queensway
Swansea West Industrial Estate
Swansea. SA5 4EB UK

email: spares@monoequip.com
Web site: www.monoequip.com

Tel. +44(0)1792 561234
Spares +44(0)1792 564039
Fax. 01792 561016