

ECO Connect Plus Static Rack Oven

EN Installation and Operation



Product Version

- FG165 (Electric)
- ECO Connect+ touchscreen
- Variable fan speed
- Standard racks only
- UK specifications



Product Serial Number

Manual Revisions

Revision	Publication Date	Author	Description
A25	31-Jan-2025	CD	Added JAN-2025 cable statement to the electrical section.
			Corrected default passcodes.
B25	24-Apr-2025	CD	Updated electrical drawings.
C25	01-Jun-2025	CD	Added missing 'no drainage requirements' to specifications.
A26	24-Jun-2026	JW	Corrected annotation on A.1 and Figure 1.1

Thank you

Thank you for purchasing MONO's ECO Connect Plus Static Rack Oven.

Before using your new oven for the very first time, please read and familiarise yourself with the contents of this User Manual and keep it handy for future reference.

If you have any queries regarding your oven, please contact MONO Equipment directly:

- +44 (0)1792 561234
- sales@monoequip.com
- spares@monoequip.com
- techsupport@monoequip.com

We wish you the very best of success with your new professional ECO Connect Plus Static Rack Oven.

Happy baking!

The MONO Team



Safety Symbols

The following safety symbols are used throughout this user manual (available electronically at [MonoEquip.com](https://www.monoequip.com)). Before using your new equipment, read the user manual carefully and pay special attention to information marked with the following symbols.

**DANGER**

- Indicates an immediate hazard with a high risk which, if not avoided, will result in death or serious physical injury.

**WARNING**

- Indicates a potential hazard with a medium risk which, if not avoided, could result in death or serious physical injury.

**CAUTION**

- Indicates a hazard with a low risk which, if not avoided, could result in minor or moderate physical injury.
-

Electrical Safety Notice

Advice regarding supplementary electrical protection

Commercial kitchens and food service areas are environments where electrical appliances may be located close to liquids, operate in and around damp conditions or where restricted movement for installation and service is evident.

The appliance installation and periodic inspection should only be undertaken by a qualified, skilled, and competent electrician and connected to the correct power supply suitable for the load as stipulated by the appliance data label.

The electrical installation and connections should meet the mandatory requirements of the local electrical wiring regulations and any safety guidelines.

We recommend:

- Supplementary electrical protection with the use of a residual current device (RCD)
- Fixed wiring appliances incorporate a locally situated switch disconnecter to connect to, which is easily accessible for switching off and safe isolation purposes. The switch disconnecter must meet the specification requirements of IEC 60947.

Your attention is drawn to the following: BS 7671:2018 – Guidance Note 8 – 8.13: Other locations of increased risk

It is recognised that there may be locations of increased risk of electrical shock other than those specifically addressed in Part 7 of BS 7671. Examples of such locations could include laundries where there are washing and drying machines in close proximity, and water is present, and commercial kitchens with stainless steel units, where once again, water is present. Where, because of the perception of additional risks being likely, the installation designer decides that an installation or location warrants further protective measures, the options available include:

- Automatic Disconnection of Supply (ADS) by means of a residual current device having a residual operating current not exceeding 30 mA;
- Supplementary protective equipotential bonding; and
- Reduction of maximum fault clearance time.

The provision of RCDs and supplementary bonding must be specified by the host organisation's appointed installation designer or electrical contractor and installed by a suitably qualified and competent electrician so as to comply with Regulations 419.2 and 544.2.



WARNING

- The supply to this machine must be protected by a 30mA-rated Type 'B' Residual Current Device (RCD).
- Always fit a wall-mountable isolator switch to isolate the oven from the electrical supply completely. The isolator must be visible, labeled as an emergency shutdown device, and easily accessible.

Water Leak Safety Notice

**WARNING**

Take action immediately to get a water leak fixed and prevent death or serious injury from electrocution.

It is essential to regularly check for any signs of a water leak from an oven installation. If there is evidence of a water leak, do not ignore it. Immediately report it to a manager or as applicable to your organisation.

Furthermore:

- Disconnect or completely isolate the oven from the electrical supply.
- Place an out-of-service notice on the oven.
- Contact your oven supplier or MONO Equipment for technical assistance.

Ovens must be maintained and serviced at appropriate intervals to ensure the oven operates at optimum levels.

Declaration of Conformity Certificate



Declaration of Conformity



We the manufacturer: **MONO EQUIPMENT**
 Queensway,
 Swansea West
 Industrial Park,
 Swansea
 SA5 4EB
 UK

Machine:

FG Code:

Serial No:

Hereby declare that this machine conforms with and complies with the following directives:

- The Machine Directive **2006/42/EC**
- The Low Voltage Directive **2014/35/EC**
- The Electromagnetic Compatibility Directive 2014/30/EU Incorporating Standards **EN 55014-1:2017/A11:2022 & EN 55014-2:1997+A1:2001+A2:2008**
- The General Safety of Machinery and Food Processing Standards
- Materials and Articles Intended to Come into Contact with Food – Regulation **(EC) No. 1935/2004**
- Good Manufacturing Practices (GMP) for Materials Intended to Come into Contact with Food
 - Regulation **(EC) No. 2023/2006**

A technical construction file for this machine is retained at MONO Equipment

MONO Equipment is a business name of **AFE Group Ltd** Registered in England No. 3872673

VAT Registration No. 923428136

Registered office: Unit 35,
 Bryggen Road,
 North Lynn Industrial Estate,
 Kings Lynn Norfolk,
 PE30 2HZ

Mr Craig Petherbridge
 Quality & Compliance Manager

Mr Alex Davies
 Engineering Manager

QD 001

Dated 01/11/2022

General Notices

LEFT-HAND (LH) and RIGHT-HAND (RH) ovens

- Depending on the model code, static racks come in two orientations:
 - Right-Hand (RH) ovens have the main door hinged on the right-side and the touchscreen control panel is located on the left-side.
 - Left-Hand (LH) ovens have the main door is hinged on the left-side and the touchscreen control panel is on the right-side.
- See Dimensional Drawings for further information.

Contents

Manual Revisions	i
Thank you	ii
Safety Symbols.....	iii
Electrical Safety Notice.....	iv
Water Leak Safety Notice.....	v
Declaration of Conformity Certificate	vi
General Notices	vii

Chapter: 1 Introduction

1.1 The MONO ECO Connect Plus Static Rack Oven	1
1.2 More about the ECO Connect Plus Static Rack Oven ..	3

Chapter: 2 Safety

2.1 Oven safety	4
-----------------------	---

Chapter: 3 Installation

3.1 Positioning the oven	6
3.2 Water supply	6
3.3 Ventilation	7

Chapter: 4 Touchscreen Operations

4.1 Basic operation	8
4.2 Starting and operating using ready-made programs ...	9
4.3 Manual bake (no program mode)	13
4.4 Creating a new program	15
4.5 Multi Bake operation	19
4.6 7-Day Timer operation.....	21
4.7 Putting the oven into Standby mode	23
4.8 Putting the oven into Sleep mode.....	23

4.9	Setting the time and date	24
4.10	User settings (oven setup).....	26
4.11	Factory settings (oven setup)	28
4.12	Changing the passwords	30
4.13	Diagnostics	32
Chapter: 5	Isolation	
5.1	Isolating the oven from the electrical supply.....	36
Chapter: 6	Cleaning	
6.1	Safety messages	37
6.2	Daily cleaning	37
6.3	Weekly cleaning	38
Chapter: 7	Maintenance	
7.1	Safety messages.....	39
7.2	General maintenance	39
Chapter: 8	Service	
8.1	Contact information for customer services	40
8.2	Further information	40
8.3	Environmental disposal	40
Appendix: A	Dimensional Drawings	41
Appendix: B	Specifications	42
Appendix: C	Passcodes	45
Appendix: D	Electrical Drawings	46

(Intentional Blank Page)

1. Introduction

1.1. The MONO ECO Connect Plus Static Rack Oven

MONO Equipment's space-saving Static Rack oven is the perfect solution when a traditional 10-tray convection oven doesn't have the required baking capacity to meet production demands. By eliminating the need for the rotary function, valuable space has been saved, meaning up to 18 trays of products can still be baked to perfection but in a much smaller footprint. The Static rack oven uses a similar amount of floor space as many 10-tray convection ovens on the market.

The Static Rack oven is ideal for baking large volumes of part-baked and lighter scratch products. Combining the specially designed heating elements and triple fans ensures an even heat distribution throughout the baking chamber, resulting in a consistent bake every time. Also, the integrated steam generating system produces copious amounts of high-quality steam to create that perfect shiny crust on bread and rolls.

The oven features MONO's ECO Connect+ control panel, which delivers full-colour, highly intuitive touchscreen operations. The controller offers many energy-saving benefits like Auto Shutdown, 7-Day timer, Sleep Mode and Variable Fan Speed. In total, the controller can store up to 240 individual bake programs, each of which can be split in to 6 bake phases for complete control of the baking process.

This compact Static Rack oven is a highly versatile and valuable addition to any bakery.

Key features

- Variable Fan Speed for more delicate products
- Compact size for smaller bakeries
- Intuitive, touch-screen ECO Connect controller
- Integrated steam system
- 6-Phase baking options
- Automatic damper facility
- LED door-mounted lighting
- Available in right-hand or left-hand configuration
- Front access ramp

Key benefits

- Provides fantastic baking capacity in a footprint not much bigger than a 10-tray convection oven
- Accommodates any 30-in. x 18-in. or 60cm x 40cm heat proof rack
- Rapid heat recovery rate for continuous baking
- Includes many energy-saving features like Auto Shutdown and Sleep Mode
- Full-Load or Half-Load options
- No drainage is required
- Stores up to 240 programmes for instant recall

**NOTE**

- Visit the [ECO Connect Plus Static Rack Oven web page](#) for the latest information about the ECO Connect Plus Static Rack Oven. Here you will find PDF downloads of the latest product literature and up-to-date product information.

Figure 1.1: ECO Connect Plus Static Rack Oven Features

- A. Glass-fronted door in left-hand configuration (see [General Notices on page vii](#))
- B. Access ramp
- C. Main isolator switch (see [Chapter 2](#))
- D. Touchscreen control panel (see [Chapter 4](#))

1.2. More about the ECO Connect Plus Static Rack Oven

The ECO Connect Plus Static Rack Oven is an electrically heated oven that accommodates a single standard rack. A user-friendly eco touchscreen allows quick-and-easy selection of automated baking programs, either by touching a product image or a numbered program. Creating new automated baking programs, using the manual bake program or 7-day timer, and adjusting settings is equally simple. When not being used, the touchscreen can show your company logo.

Constructed from high-grade stainless steel and glass, the oven's interior and exterior surfaces are easily cleaned and afford a bright appearance. The large glass panel provides an excellent view of the baking progress. Furthermore, to optimise a bakery layout, the main oven door can be hinged on either side even if the oven is relocated after initial installation.

The high-speed fan, heating, and steam systems give efficient air circulation to produce a professional bake across a range of products via a diagonal cross-flow system with efficient air circulation. The steam system is connected to a standard water supply. (Pumps are available for very low-pressure areas).

Steam is generated within the oven chamber by means of a multi-point, water injection cascade. The amount of steam to be generated is controlled by means of a programmable time period on the control panel. No drain is required for the baking and steaming process of this oven.

Programmed damper control is provided as part of the programming controls.

2. Safety

2.1. Oven safety

Only fully trained and authorised persons are permitted to do any work on the oven. Qualified electricians must carry out all electrical repairs and maintenance. Always disconnect or completely isolate the power supply before starting any maintenance or cleaning work on the oven.

A responsible Bakery Manager or Supervisor must carry out daily safety checks. Bakery staff must not, under any circumstances, remove covers or panels to access any internal parts of the oven.



WARNING

- Before using the oven:
 - Check that all covers, panels, and cabling are secure.
 - Visually examine the oven for obvious damage/signs of tampering.
 - If the oven is damaged, malfunctioning, or missing parts:
 - Stop using it.
 - Do not attempt any repairs to the oven.
 - Contact MONO Equipment for technical assistance.
 - Never operate the oven with any covers or panels removed.
 - All utility connections to the oven must comply with the statutory requirements of the country.
 - Ensure this User Manual is read thoroughly before operating the oven. Operate and maintain the oven only as described in this user manual.
-



WARNING

- An electrical socket must be protected by a 30mA-rated Type 'B' Residual Current Device (RCD) before installation and commissioning of the oven.
 - There should always be a local disconnection switch for any person to isolate the electrical power in an emergency. The disconnection switch must be visible, labeled as an emergency shutdown device, and easily accessible.
 - Check the electrical requirements on the oven's information plate before plugging in the power cable and turning the power on for the first time. Contact MONO Equipment if the electrical ratings are incorrect for your site.
 - Before installation, it is recommended that a qualified and competent electrician first tests the electrical outlet (power socket) for electrical safety.
 - Always ensure your hands are dry before touching any electrical components, including cables, switches, and plugs.
-

**CAUTION**

- Be aware of hot surfaces:
 - Do not touch the oven door with bare skin.
 - Always use oven gloves when loading or unloading the oven.
 - Allow time for the oven to cool completely before cleaning it.
 - While baking (and for some time after use), touching the oven door or the surrounding panels is not advisable because of conducted heat.
- When removing products from the oven, ensure the following:
 - Tins are knocked out and stored directly onto a tin storage trolley or rack. Do not leave hot tins on the floor or tables.
 - Trays are put into a rack and then wheeled to a safe cooling area.
- Fully train operatives before they use the machine. Anyone undergoing training must be under direct supervision of someone experienced.
- Ensure there are no trip hazards around the oven, e.g. trailing cables.
- Check that the floor around the oven is not slippery, e.g. no liquid spills.
- Do not store items on top of or behind the oven.
- Never climb onto the roof of the oven.
- Only use the oven for baking bread, pastries, and cakes. Contact MONO Equipment for other product-baking machines.
- No unauthorised modifications to the oven are permitted.

3. Installation

3.1. Positioning the oven

- The ECO Connect Plus Static Rack Oven is designed to operate as a freestanding unit and must not be bolted down or fixed to the floor in any way.
- The floor beneath the oven must be:
 - hard, smooth, and level (ideally, concrete)
 - clear of any obstructions, and
 - a minimum thickness of 150 mm (6 inches)
- Allow room for servicing and general maintenance such as cleaning.
- The foundation must be flush with the overall bakery floor because racks are wheeled up a ramp into the baking chamber. The ramp is supplied with the oven.
- A minimum headroom clearance of 3 metres (180 inches) between the floor and the bakery ceiling is required at all times.
- If not selected when ordering the oven, an extraction hood should be placed above the oven to disperse excess steam and heat that could adversely affect the bakery ceiling and ambient temperature.

3.2. Water supply

- Connect the ECO Connect Plus Static Rack Oven to a suitable water supply **after** checking pipes are flushed out to remove all foreign bodies, i.e. flux or solder. Each oven is supplied with a 1 metre, flexible hose with ¾-inch BSP connections at both ends.
- It is the responsibility of the customer to install and maintain:
 - an adequate supply to the oven which complies with local and national water regulations.
 - an efficient water-softening device to protect the supply to the oven in a hard-water area.
 - protection against back-flow in the supply.
- No drain is required unless fitting a condenser.
- A water conditioning unit is recommended.
- See [Appendix B](#) for minimum water supply requirements.



NOTE

- Customers are responsible for installing and maintaining an adequate water supply to the oven, which should comply with local water regulations. Check with your local water authority.

3.3. Ventilation

It is the customers' sole responsibility to arrange for adequate ventilation. Ventilation should be sufficient to ensure water does not condense on or around the oven.

- Allow a 50 mm (2-inch) gap at the sides and rear of this oven for air flow.
- Chimneys and evacuation ducts fitted above MONO ovens should be insulated.

It is recommended that evacuation of the oven baking chamber products is achieved with a hood covering the entire oven top and projecting beyond the front of the oven by 600 mm (23½ inches). The extraction rate from the hood should be approximately 1700 m³/h. The customer is responsible for providing adequate levels of make-up air if an extraction hood is fitted.

4. Touchscreen Operations

4.1. Basic operation

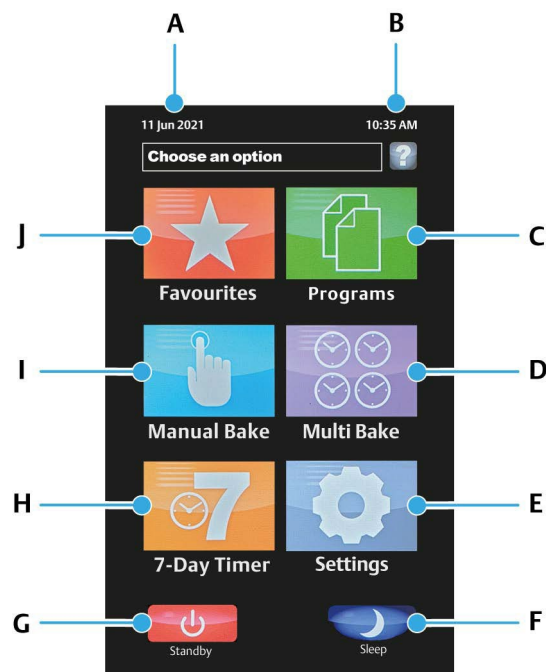
Operations are performed by touching an area of the screen to bring up another window or activate a function.



NOTICE

Do not use excessive force to operate the touchscreen panel.

Figure 4.1: Main ECO Connect Plus screen



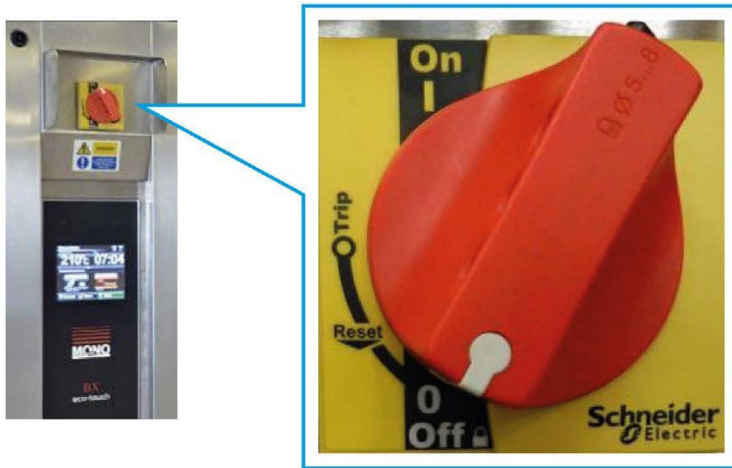
A. Date
B. Time
C. Programs

D. Multi Bake ([Section 4.5](#))
E. Settings ([Sections 4.9 to 4.11](#))
F. Sleep mode

G. Standby mode
H. 7-Day timer ([Section 4.6](#))
I. Manual bake ([Section 4.3](#))

4.2. Starting and operating using ready-made programs

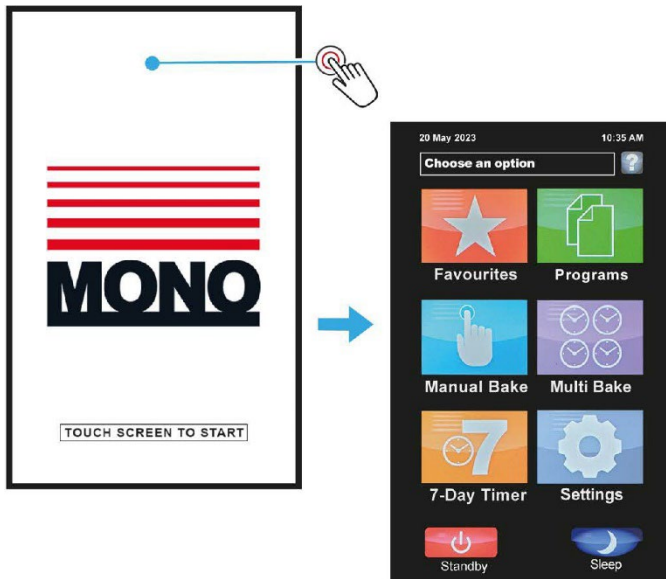
1. Ensure the power and water supplies are safely connected to the oven.
2. If the display is off, turn the main isolator switch on the oven to the "1" (ON) position.
 - Wait while the oven goes through the start-up sequence.



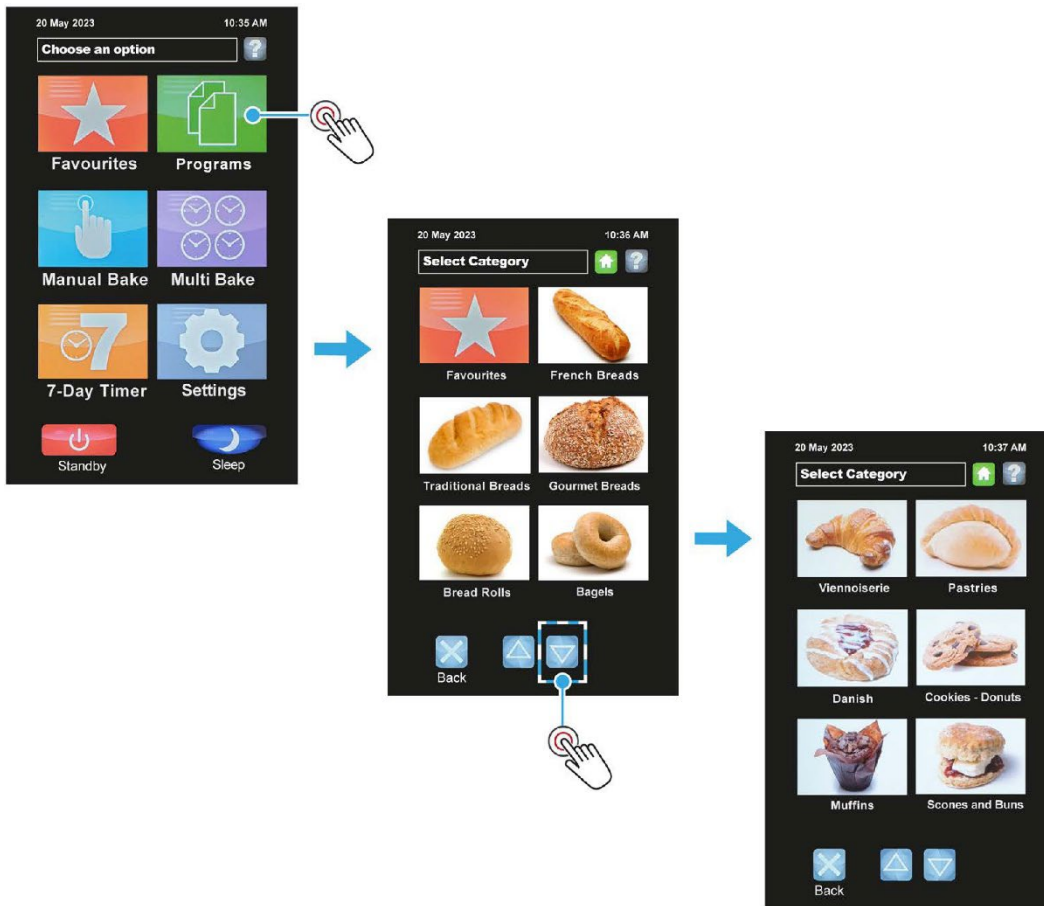
NOTE

- The images are for illustration purposes and may differ from your oven.

3. When the start-screen (wallpaper) appears, touch the screen anywhere to start operating the oven.



4. Touch the **Programs** tile on the **Choose an option** screen.

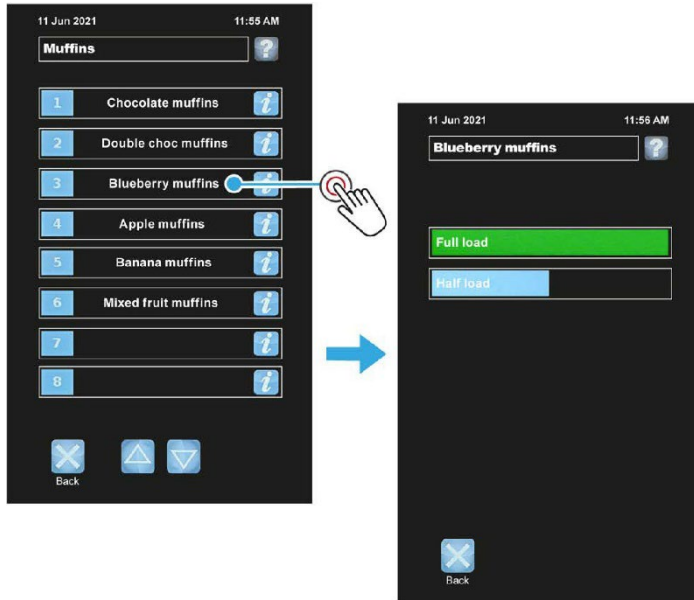


5. Select a product category.
- a. Touch the scroll up and down buttons to change category pages.
 - The **Back** button returns the display to show the **Choose an option** screen.
 - b. Touch the tile of a product type you require (e.g., muffins).
 - A list of recipes then displays for that product type.

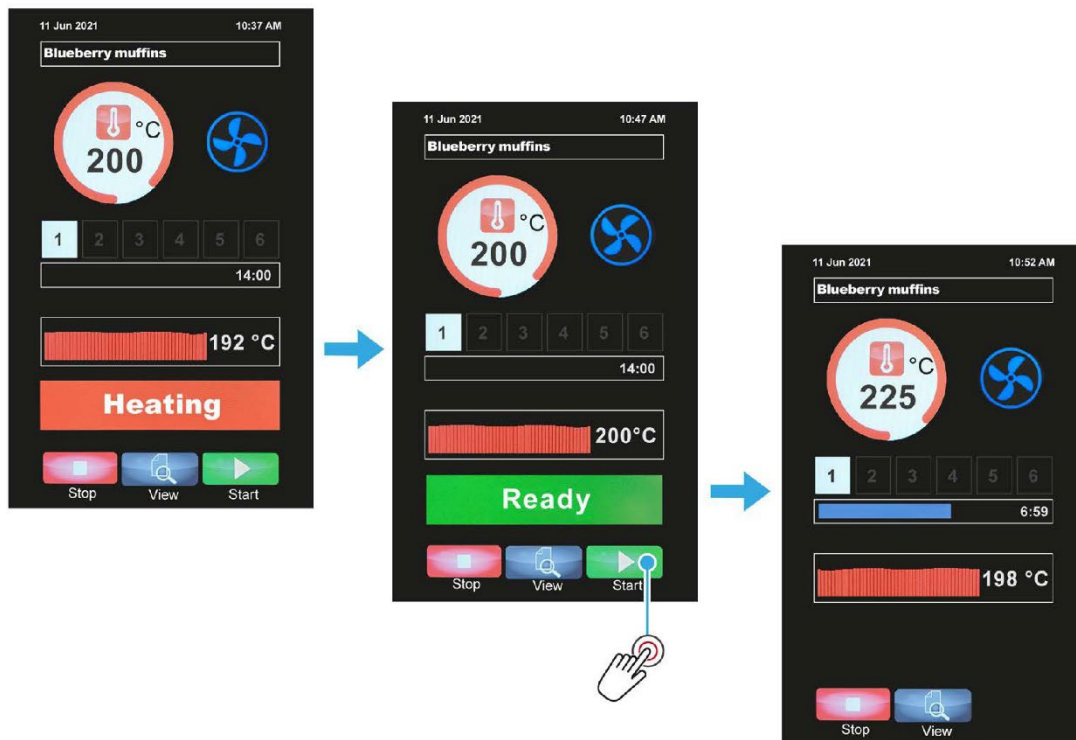
NOTE

- Tiles show a product group image or a program number group, depending on how the oven was factory configured.

6. Select a baking recipe.
 - a. Touch the baking recipe required (e.g., blueberry muffins).
 - b. If prompted, select **Full Load** or **Half Load** depending on the oven loading.
 - The half-load program reduces energy usage when the oven is not fully loaded with product. Some experimentation is needed to establish the optimal settings for a half-load program.

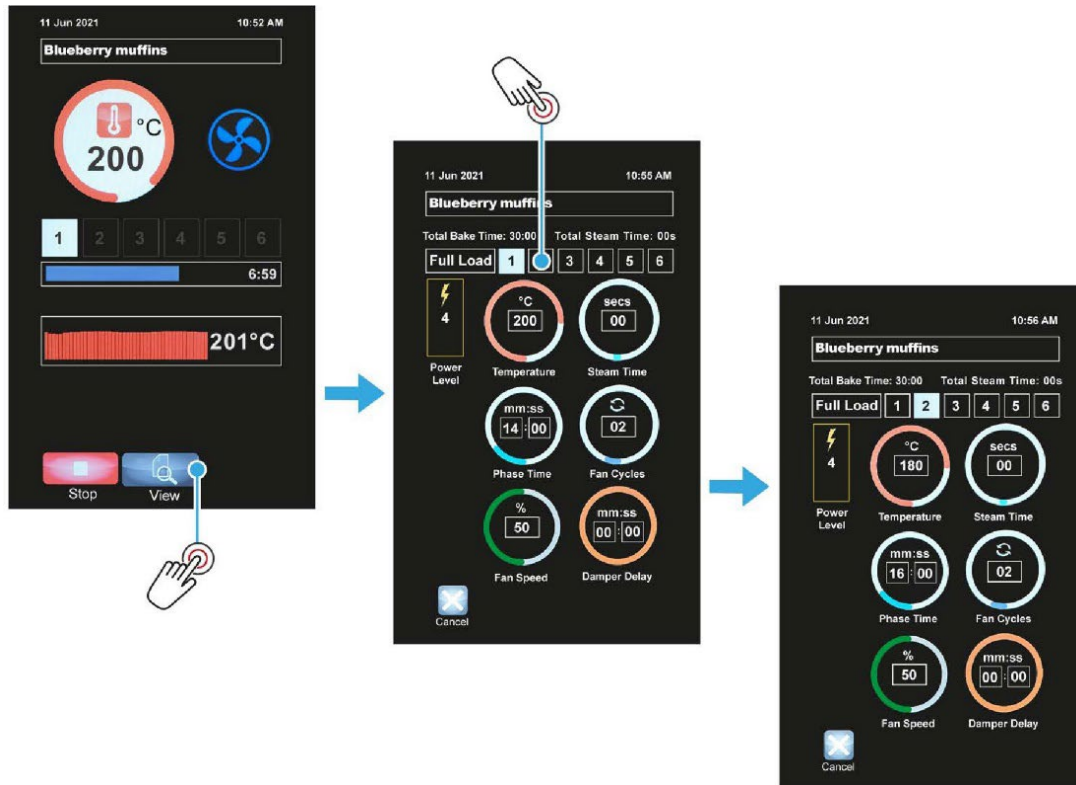


7. Wait while the oven heats-up to the temperature pre-set in the recipe program.
 - A **HEATING** message flashes on the screen.



8. Load the oven with products when **READY** flashes on the screen.
9. Touch **Start** to begin baking.

10. During a bake, two actions can be performed:
- Touch the **View** button to view settings during a bake.
 - Touch the numbered square (e.g., **2**) to view the settings for different baking phases. The **Cancel** button displays the baking screen again for the present baking phase.

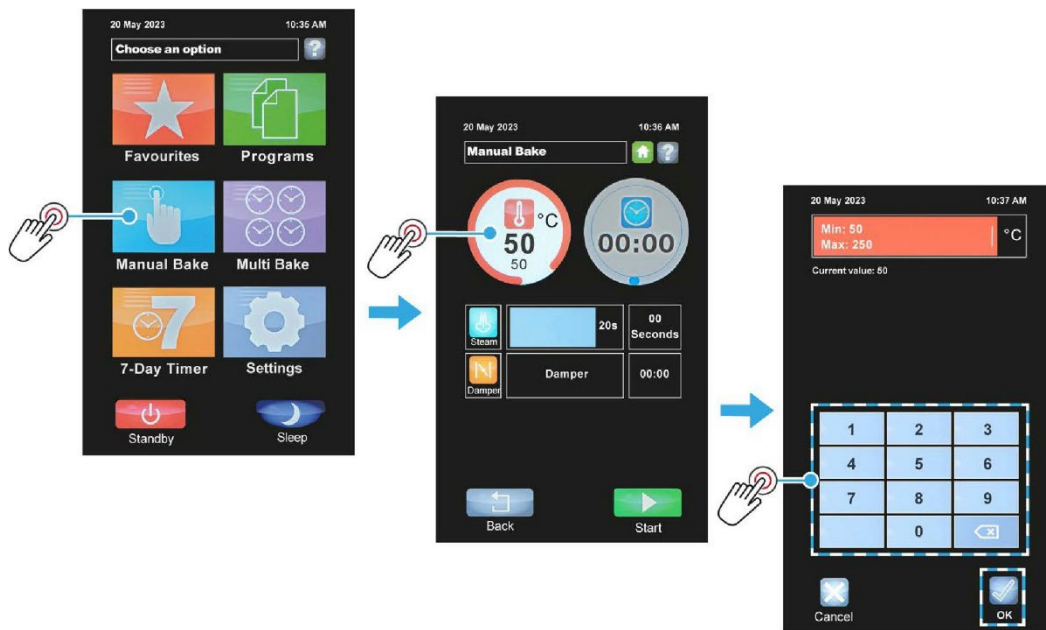


NOTE

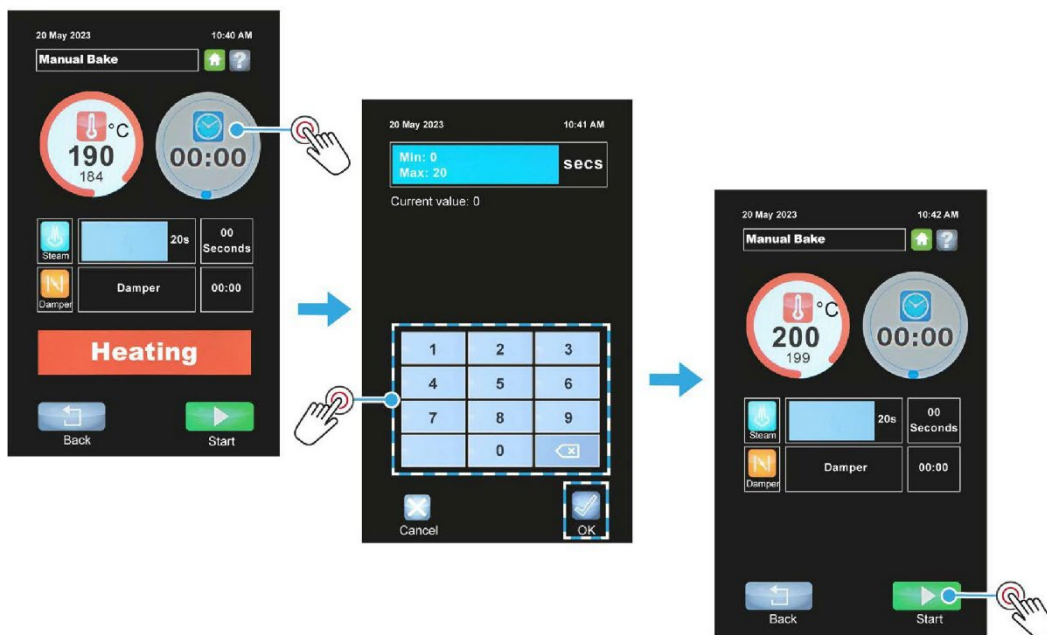
- The actual oven temperature fluctuates. It may briefly drop below, or rise above, the required temperature by a few degrees during baking. This is normal and not a malfunction of the oven.
- To minimise heat loss from the oven, do not leave the oven door open for longer than needed. The oven will automatically recover from the heat lost when the door is closed.

4.3. Manual bake (no program mode)

1. Touch the **Manual Bake** tile.
2. Set the baking temperature:
 - a. Touch the **Temperature** circle.
 - b. Key in the baking temperature, and then touch the **OK** button.





3. Set the baking time (if required):
 - a. Touch the **Timer** circle.
 - b. Key in the baking time required, and then touch the **OK** button.



4. Load the oven with products and touch **Start**.
5. During the bake, use the **Steam** and **Damper** functions if needed (see [Table 4.1](#)).
6. When the timer is counting down and reaches **00:00**, a sounder is heard and a **BAKE OVER** message flashes on the screen. Touch **Stop** to silence the sounder.
7. Manual baking can be stopped at any time by touching **Stop**.

Table 4.1: Steam and Damper button functions

Button	Function	Purpose of the function
	Steam	After touching Start , touch the Steam button for the number of seconds wanted and release.
	Damper	Touch the Damper button to open the damper, and touch again to close. (The button changes colour when the damper is open).

NOTE

- If no baking time is set and the **Start** button is touched, the timer counts upwards until the bake is stopped by pressing the **Stop** button. (While the screen shows a **HEATING** message, wait until the oven reaches temperature before touching **Start**).

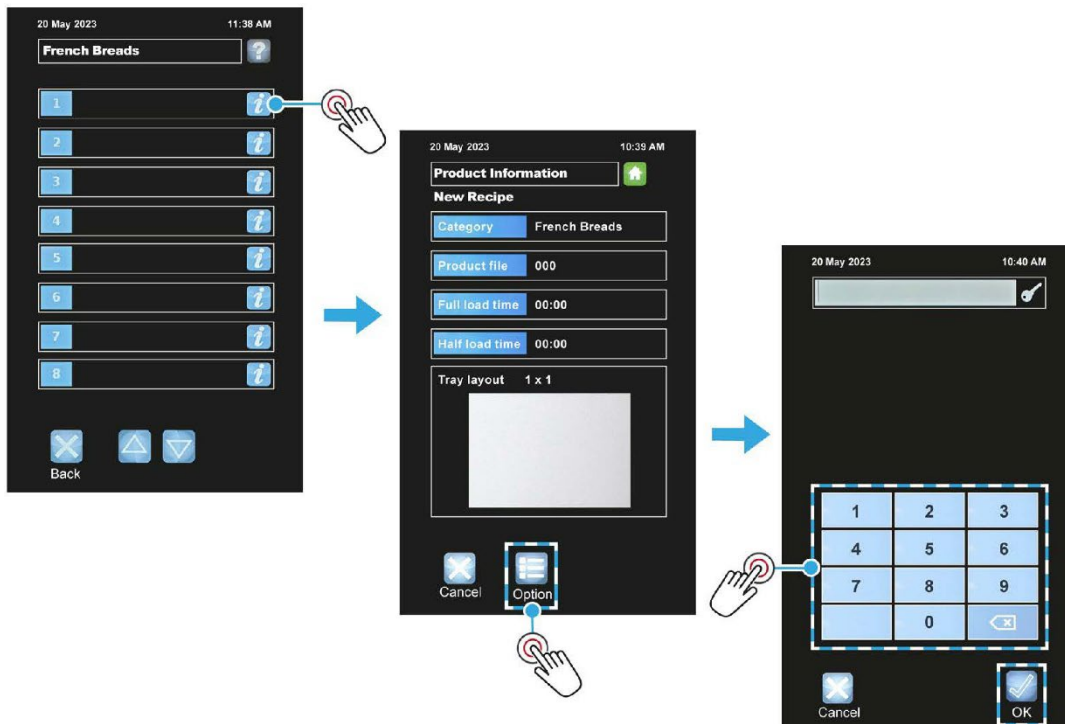


4.4. Creating a new program

1. Touch the **Programs** tile.
2. Choose a category or number group.

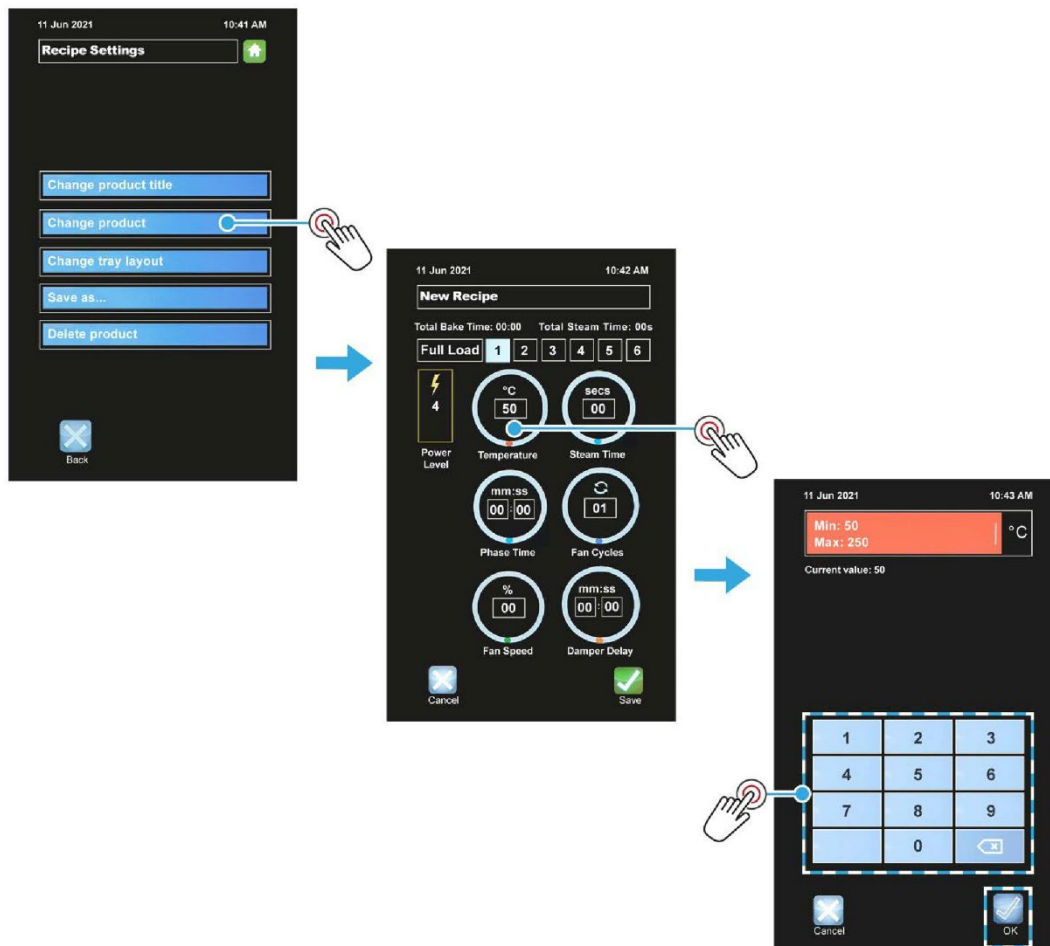


3. Touch the **Info (i)** button of the next free recipe slot.
4. Touch the **Options** button.

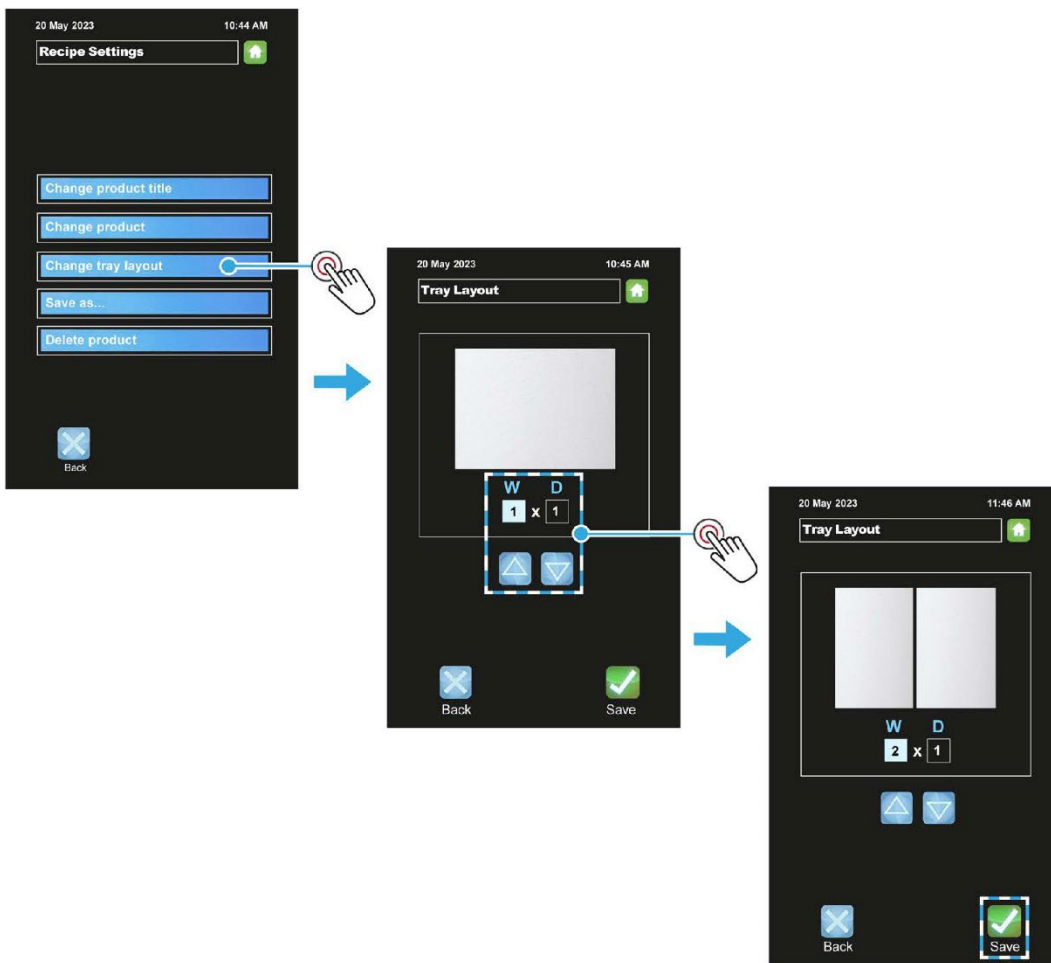


5. Enter the **Operator** password and touch **OK**.

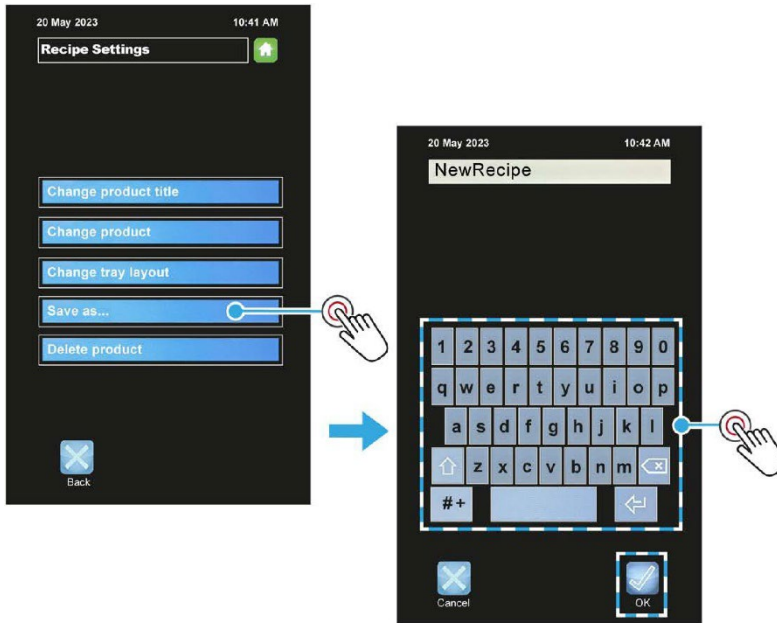
6. Edit a product recipe:
 - a. Choose the **Change product** menu option.
 - b. Choose the **Full-load** or **Half-load** option.
 - c. Select a baking phase number e.g. **1**).
 - d. Touch an item:
 - Temperature, Steam time, Phase time, Fan cycles, Fan speed, Damper delay, or Power level.
 - e. Adjust the setting by typing the amount or, if they appear, using the up and down keys.
 - f. Touch **OK** to confirm the setting value.
 - g. Repeat steps (d) to (f) for each item needed in that baking phase.
 - h. If required, select the next baking phase (i.e. touch **2**) and adjust the items in the same way.
 - i. Touch **Save** to confirm the completed recipe settings.



7. Edit a tray layout for the new product recipe:
 - a. Touch the **Change tray layout** box.
 - b. Touch the **W** (width) box to highlight it.
 - c. Use the up or down arrow key to change quantity across the tray.
 - d. Touch the **D** (depth) box to highlight it.
 - e. Use the up or down arrow key to change quantity down the tray.
 - f. Touch **Save** to confirm the tray layout.



8. Add the new product recipe to the list.
 - a. Touch the **Save as...** box.
 - b. Input a name for the product recipe, and then touch **OK**.



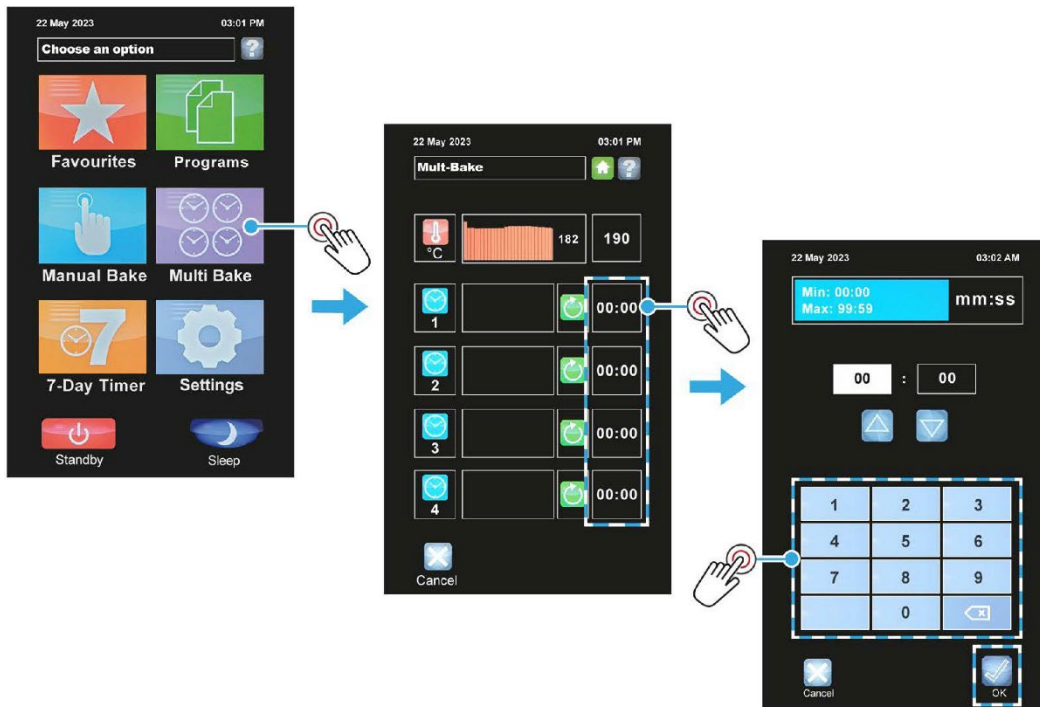
9. Touch the **Home** button to finish.

NOTE

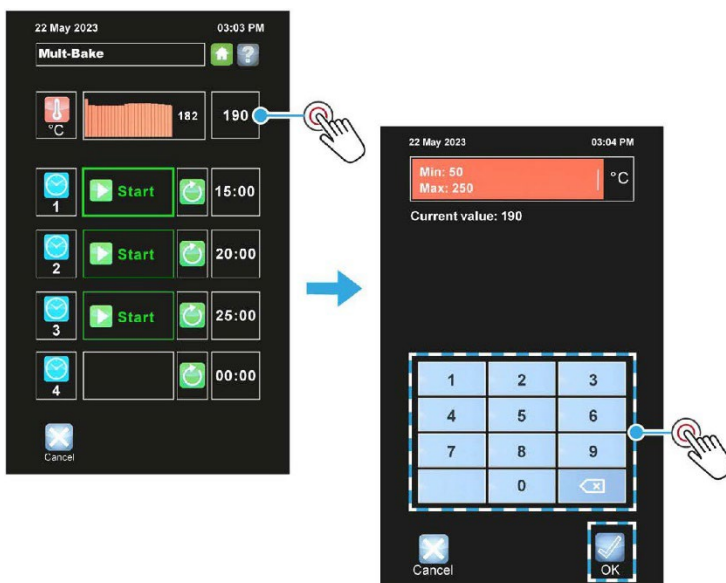
- Default passwords for the various access levels are in [Appendix C](#). However, for security reasons, the passwords section may have been removed.
-

4.5. Multi Bake operation

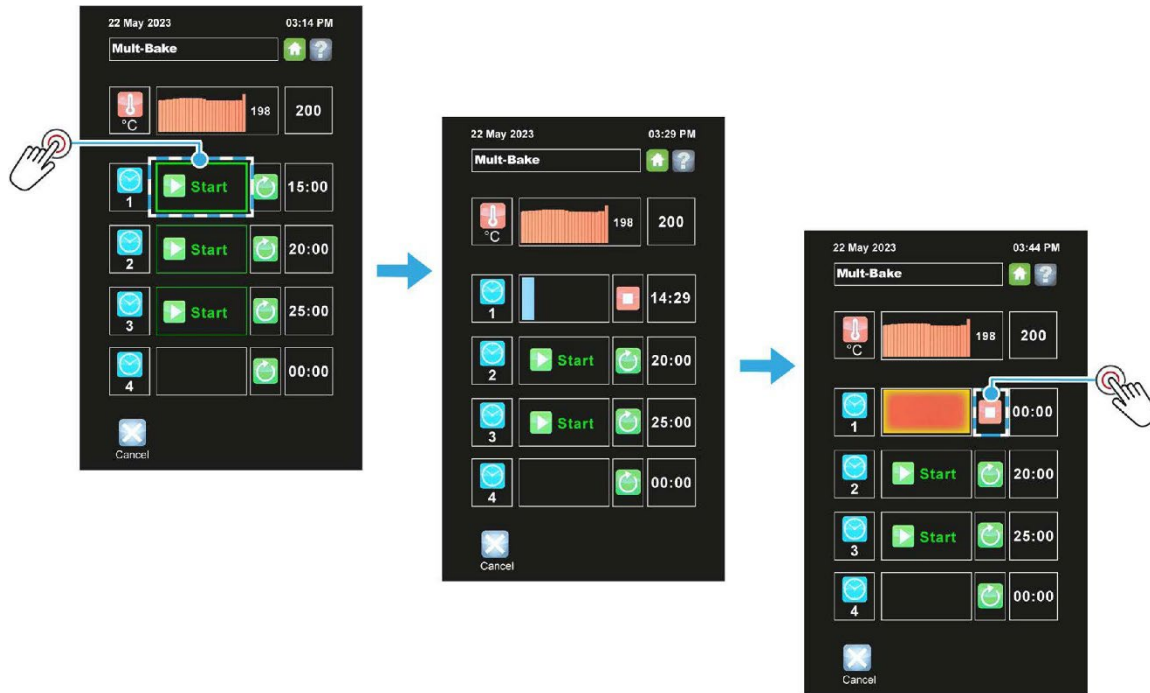
1. Touch the **Multi Bake** tile.
2. Set a timer:
 - a. Touch a time-setting box.
 - b. Adjust the bake time required using up and down keys, and then touch the **OK** button.
 - c. Repeat steps (a) and (b) to set up to four different bake time sequences, if required.



3. Set the temperature for the bakes:
 - a. Touch the heat-setting box, and then type in the temperature required.
 - b. Touch **OK** to confirm the temperature.

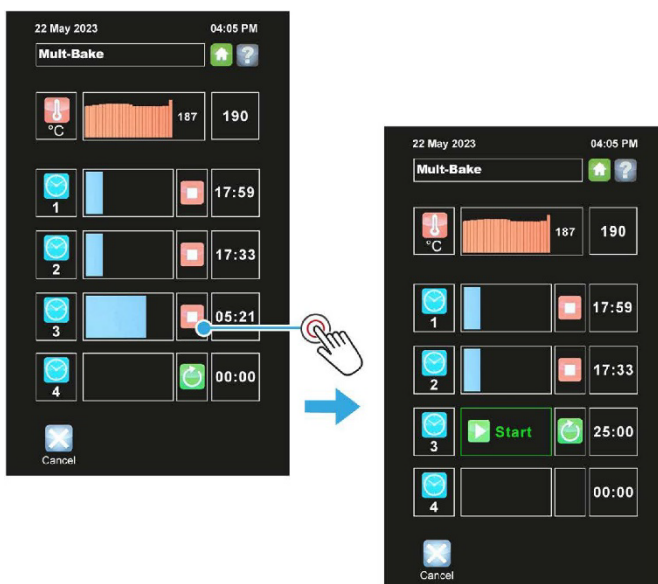


4. Load the oven and then when ready to start a bake:
 - a. Touch the **Start** button (next to the bake time required).
 - b. Wait for the bake to finish.
 - c. Touch the **Stop** button next to the **00:00** time.
 - d. The same multi-bake settings can now be used again by pressing the same **Start** button.



NOTE

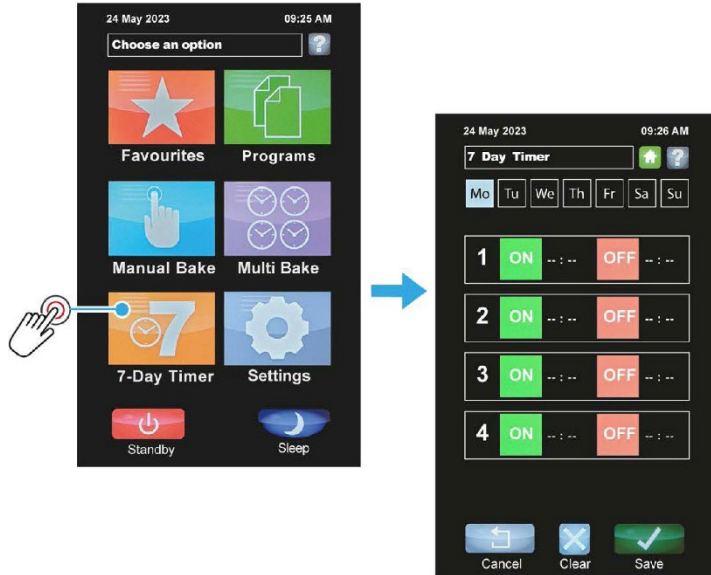
- Touch the **Stop** button at any time to end a bake. The same multi-bake settings can be used again.



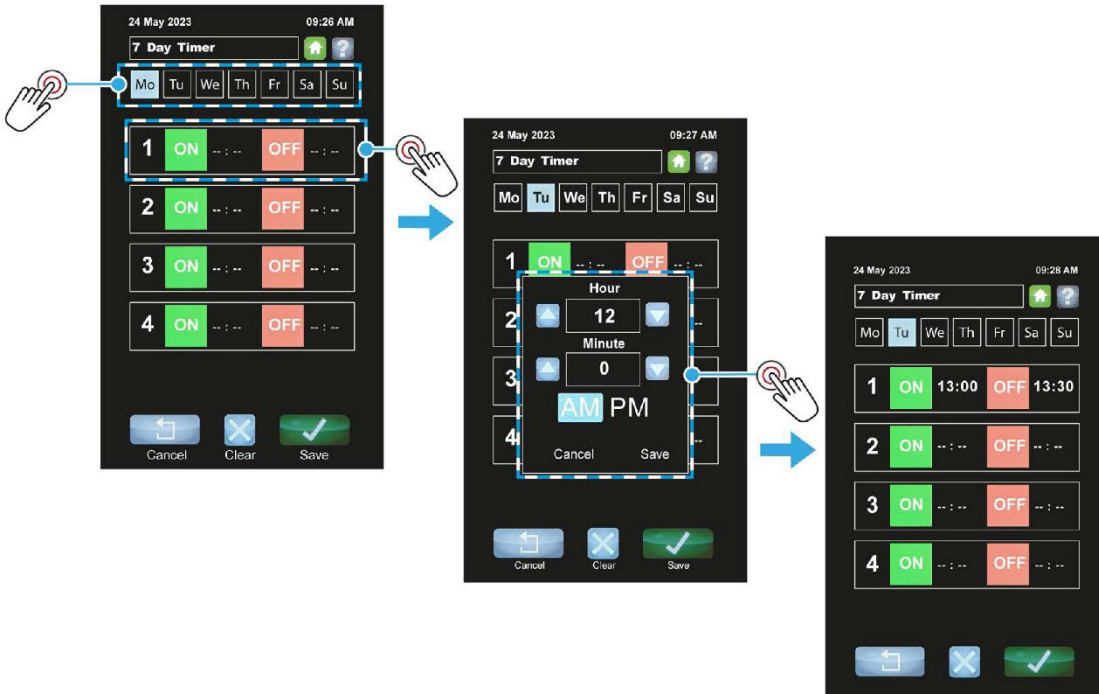
4.6. 7-Day Timer operation

While the oven is in **standby** mode, the baking chamber can be heated-up to a pre-set temperature at any time on any day. Up to four on/off heating times for each day of the week can be entered into the 7-day timer.

1. Touch the **7 Day Timer** tile.

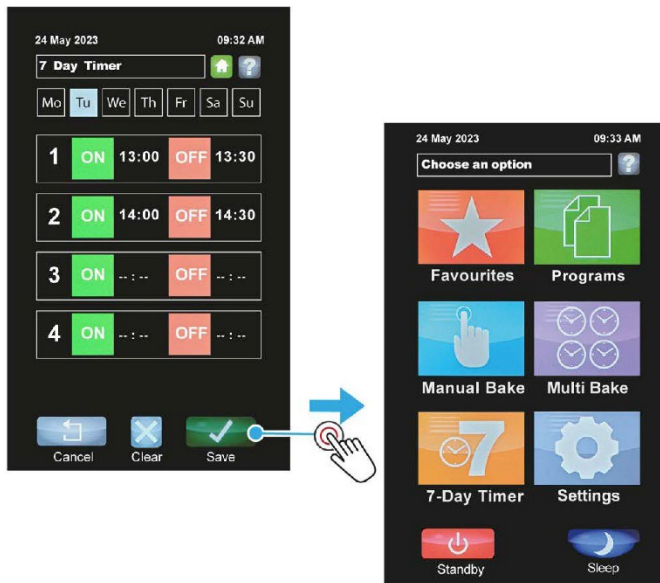


2. Touch a day of the week, e.g. "Tu" (Tuesday).



3. Set an **ON** time for that day:
 - a. Touch the **ON** tile of a time panel.
 - b. Set the time using the keys in the pop-up box that appears, and then touch **Save**.

4. Set an **OFF** time for that day:
 - a. Touch the **OFF** tile of the same time panel.
 - b. Set the time using the keys in the pop-up box that appears, and then touch **Save (A)**.
5. If required, set up to three more on/off times for that day.
6. Repeat steps (2) and (5) to set up on/off times for other days.
7. When finished, touch **Save** to confirm all the 7-day settings.

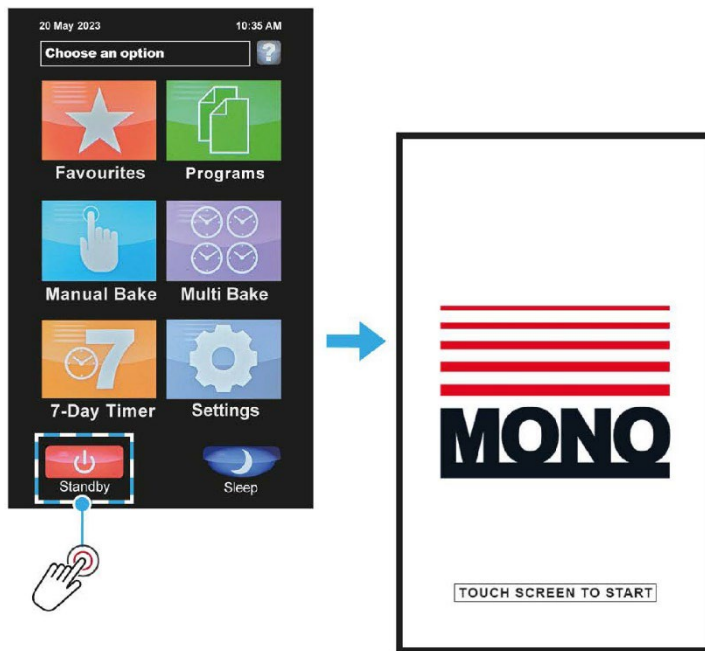


NOTE

- Remember to leave the oven in **Standby** mode for this 7-day timer function to operate.

4.7. Putting the oven into Standby mode

The **Standby** button turns the oven off until the screen is touched again.



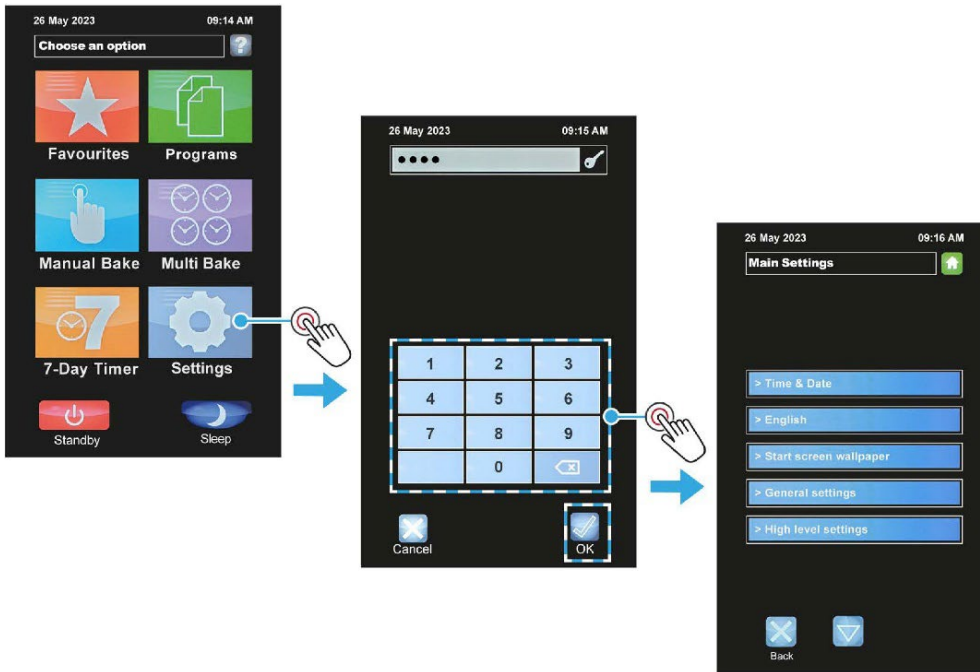
4.8. Putting the oven into Sleep mode

If enabled in the oven settings, the **Sleep** button instructs the oven to maintain temperature to a pre-set value.



4.9. Setting the time and date

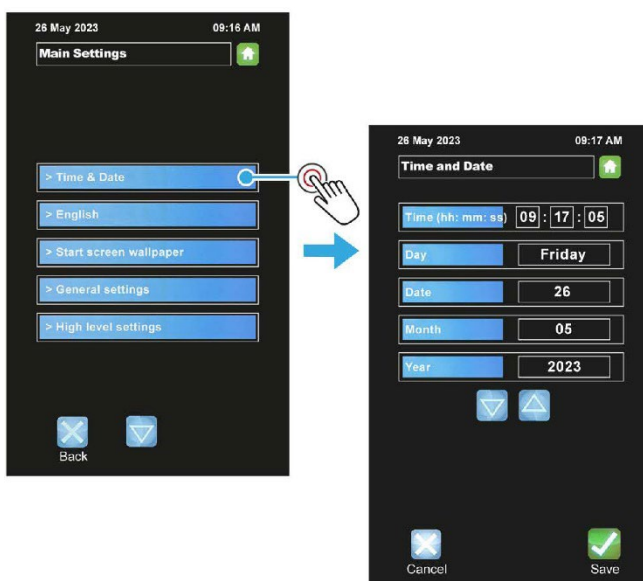
1. Touch the **Settings** tile.
2. Enter the **Oven Settings** password, and then touch the **OK** button.



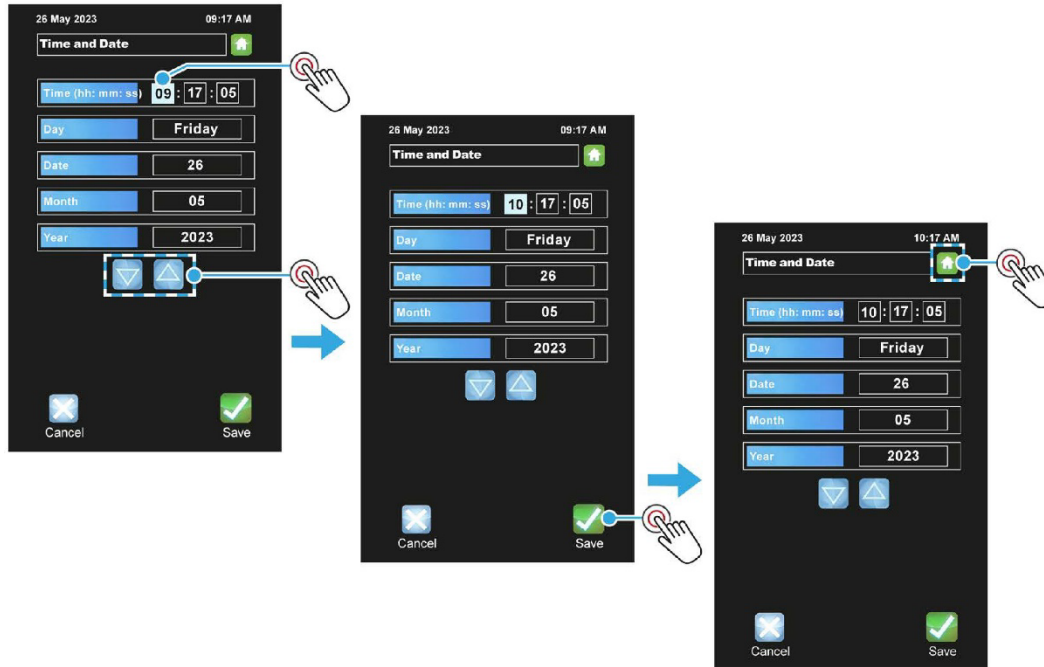
NOTE

- Default passwords for the various access levels are in [Appendix C](#). However, for security reasons, the passwords section may have been removed.

3. Touch the **Time and Date** box.



4. Touch the item that needs adjusting, and then use the up or down arrows as required.
 - The time, date, month, and year can be adjusted.
 - The day is not adjustable – it automatically updates using the date, month, and year.



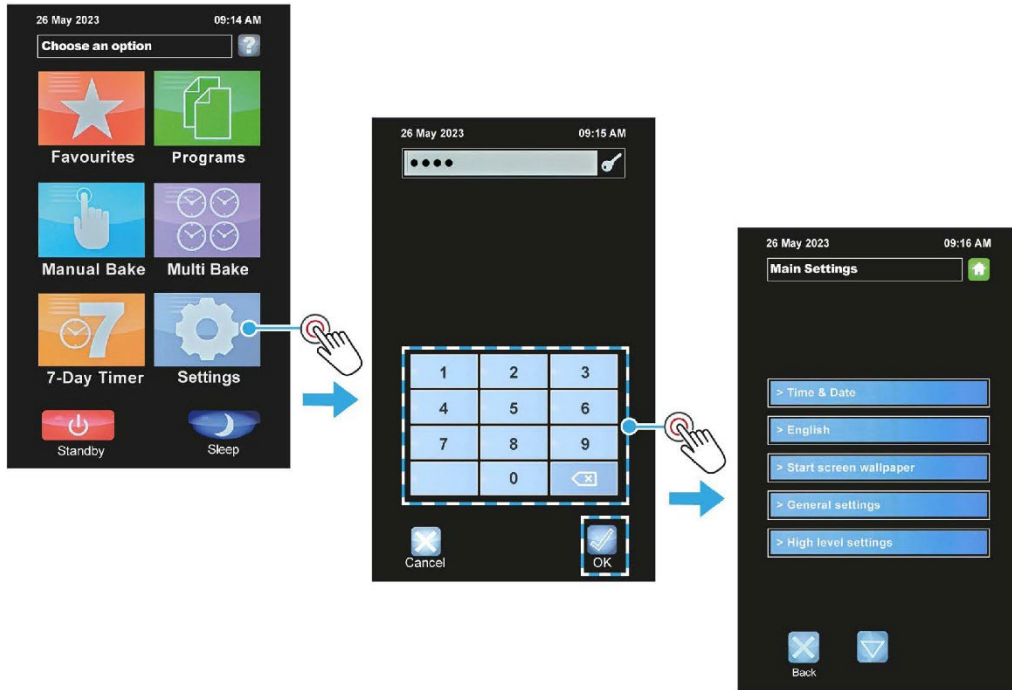
5. Touch **Save** to confirm new settings.
6. Touch the **Home** button to return to the main screen.

NOTE

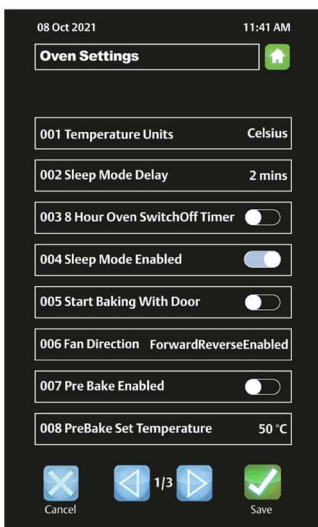
- See [Section 4.10](#) for more information about the user settings for the oven.
-

4.10. User settings (oven setup)

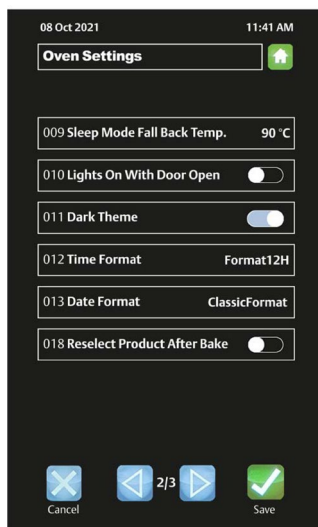
1. Touch the **Settings** tile.
2. Enter the **Oven Settings** password, and then touch **OK**.
3. Touch the **General settings** box.



4. Touch the **Left Arrow** and **Right Arrow** buttons to access the pages of oven settings.
5. To make an adjustment, touch the item and change the setting.



Page 1



Page 2



Page 3

6. Touch the **Save** button when all the oven settings are set as required.

NOTE

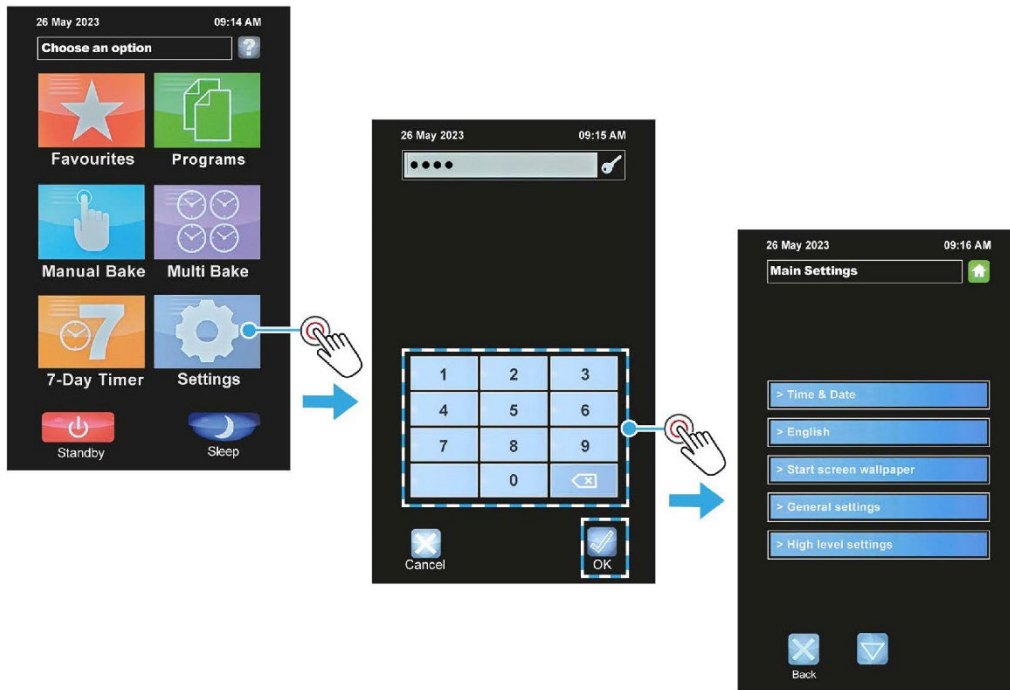
- Default passwords for the various access levels are in [Appendix C](#). However, for security reasons, the passwords section may have been removed.
-

Table 4.2: Oven settings explained (general level)

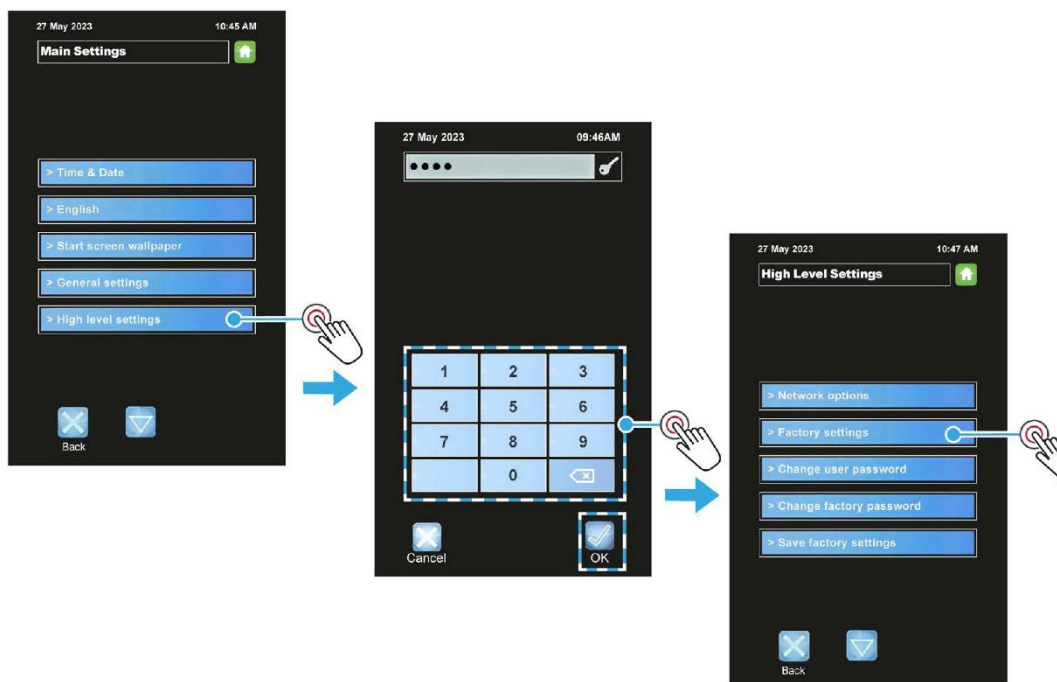
Oven setting	Description
Temperature Units	Centigrade (Celsius) or Fahrenheit.
Sleep Mode Delay	Oven will go into sleep mode after the set minutes, providing it is up to temperature and has been through at least one bake cycle.
8 Hour Switch Off Timer	After 8 hours the oven gives a warning and then turns off. Press any button for an extra hour if required.
Sleep Mode Enabled	Enable or disables the sleep mode button.
Start Baking With Door	This will start the set bake program as soon as the door closes.
Fan Direction	Fan operating modes.
Pre Bake Enabled	Enable or disables heating-up the oven to a preset temperature.
Pre Bake Set Temperature	Preset temperature setting for the pre-bake function.
Sleep Mode Fall Back Temp.	Preset temperature for the oven to maintain whilst in Sleep Mode.
Lights On With Door Open	Option to switch on the oven light whenever the door is opened.
Extra Time Minutes	Adjusts the extra time at the end of a bake for each “extra time” button press. Maximum setting is 10 minutes.
Dark Theme	Colour scheme selection.
Time Format	Preferred format for displaying the time of day.
Date Format	Preferred format for displaying the date, month, and year.
Displayed Temperature	Options to display different temperatures.
Power Level 1 to 4	Set these as required for each level to be used.
Chart Interval	Time interval in seconds that the bars show on the heat and bake time progress charts.
Screen Brightness	Adjusts the brightness of the viewing screen for user comfort.

4.11. Factory settings (oven setup)

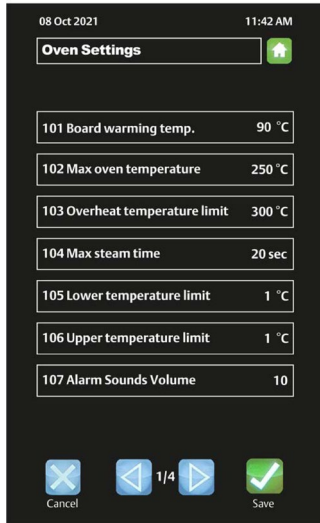
1. Touch the **Settings** tile.
2. Enter the **Oven Settings** password, and then touch **OK**.
3. Touch the **High level settings** box.



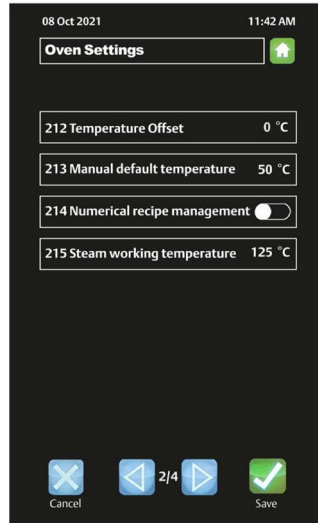
4. Enter the **High level settings** password, and then touch **OK**.
5. Touch the **Factory settings** box.



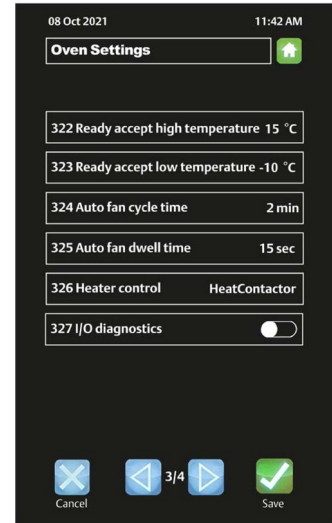
6. Touch the **Left Arrow** and **Right Arrow** buttons to access the pages of oven settings.



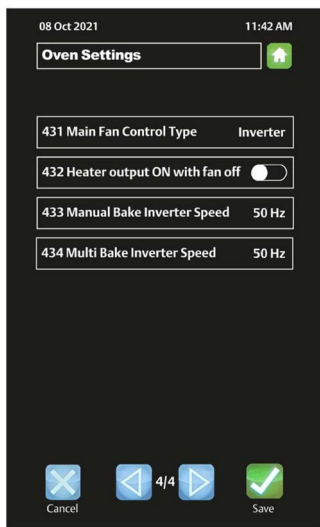
Page 1



Page 2



Page 3



Page 4

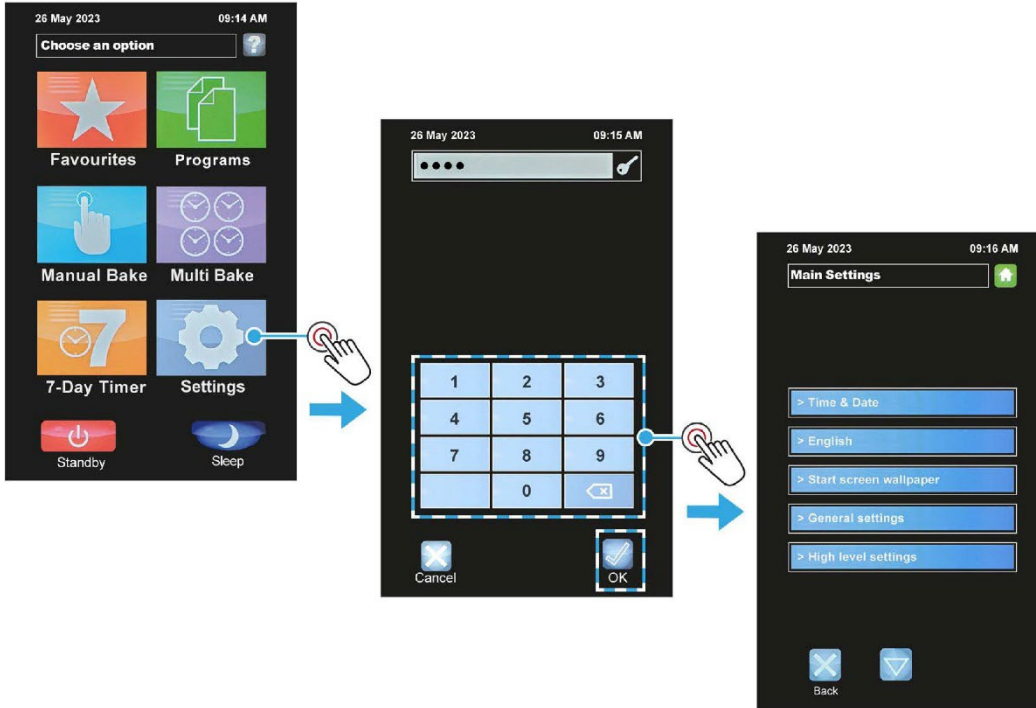
7. To make an adjustment, touch the item and change the setting.
8. Touch the **Save** button when all the oven settings are as required.

NOTE

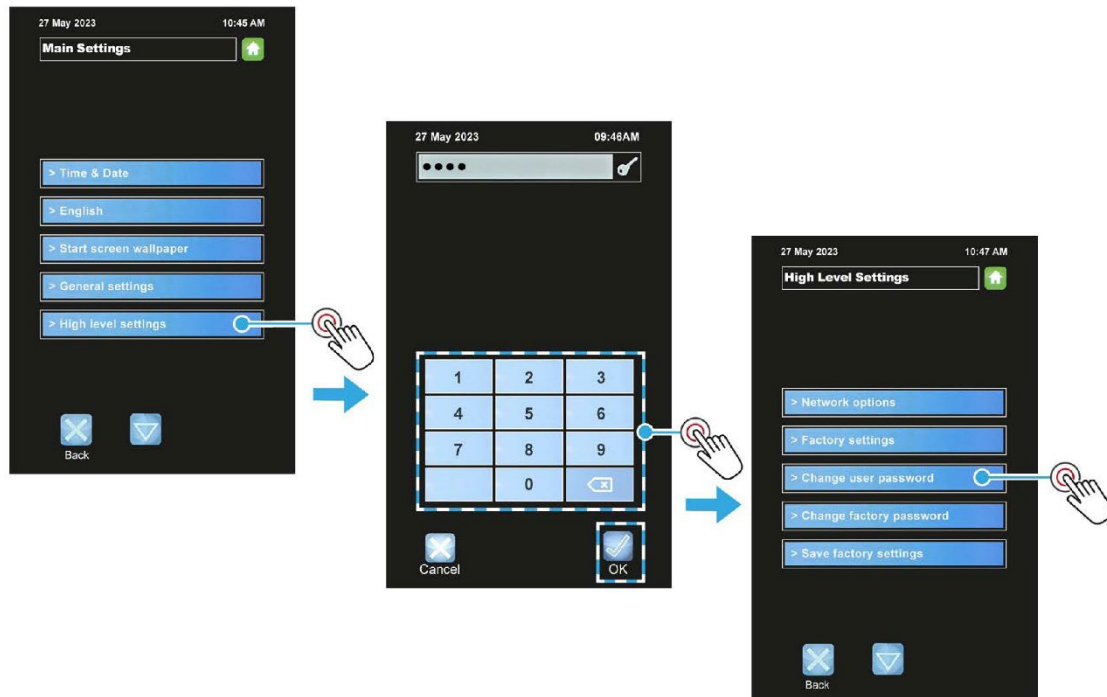
- Default passwords for the various access levels are in [Appendix C](#). However, for security reasons, the passwords section may have been removed.

4.12. Changing the passwords

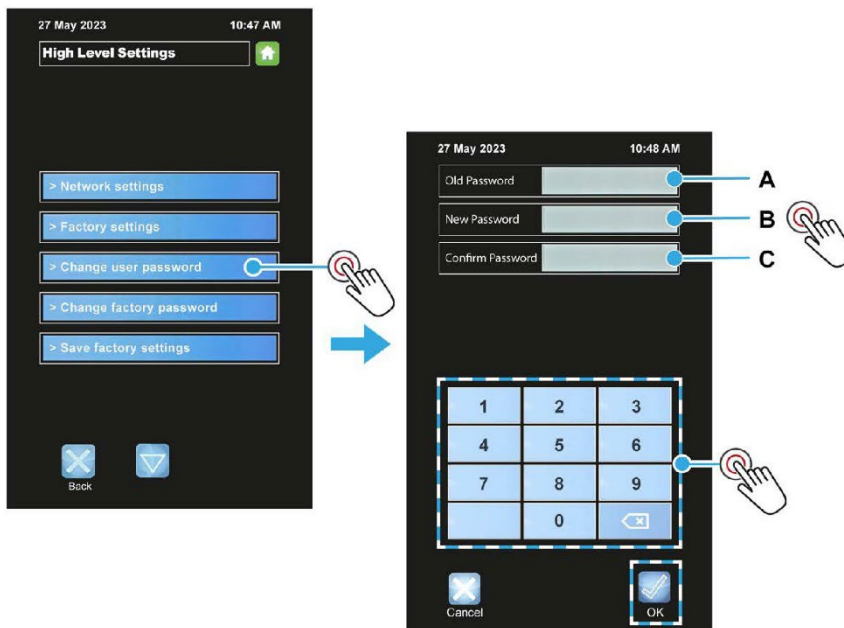
1. Touch the **Settings** tile.
2. Enter the **Oven Settings** password, and then touch **OK**.



3. Touch the **High level settings** box.
4. Enter the **High level settings** password, and then touch **OK**.



5. To change the user settings password:
 - a. Touch **Change user password**.
 - b. Touch the **Old Password** box (A) and enter the current password.
 - c. Touch the first **New Password** box (B) and enter the new password.
 - d. Touch the **second New Password** box (C) and enter the new password again.
 - e. Touch the **OK** button.



6. To change the factory settings (high level) password:
 - a. Touch **Change factory password**.
 - b. Touch the **Old Password** box (A) and enter the current password.
 - c. Touch the first **New Password** box (B) and enter the new password.
 - d. Touch the **second New Password** box (C) and enter the new password again.
 - e. Touch the **OK** button.

NOTE

- Default passwords for the various access levels are in [Appendix C](#). However, for security reasons, the passwords section may have been removed.
-

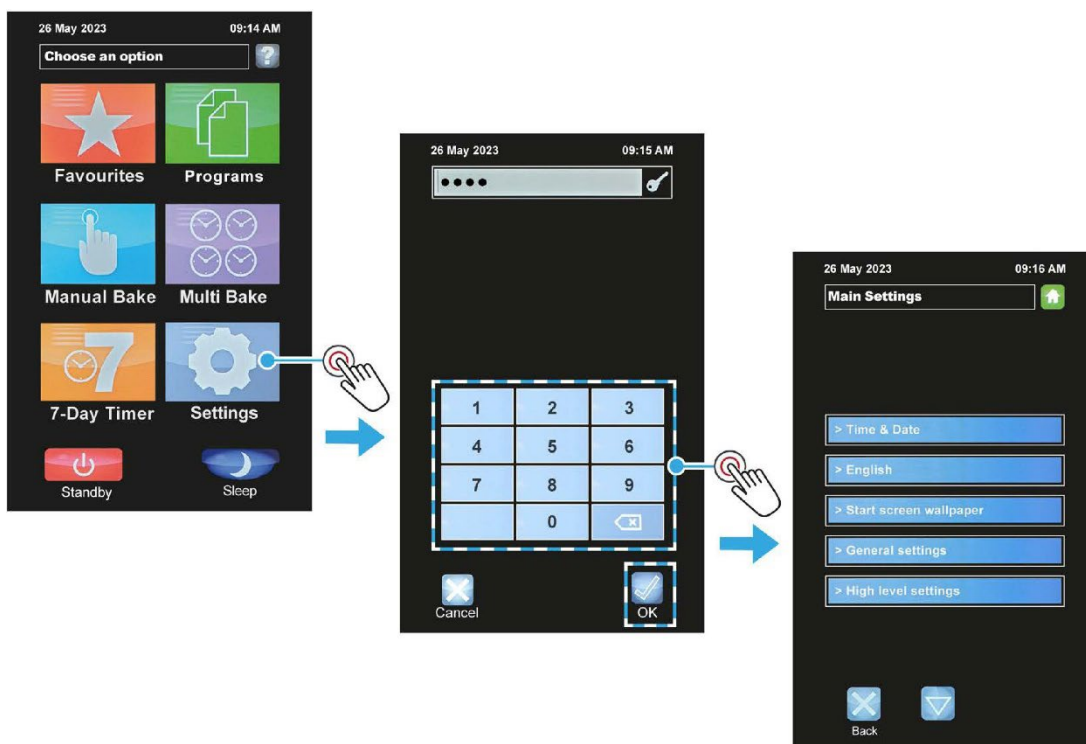
4.13. Diagnostics

The operation of the following items can be checked from the diagnostics screen:

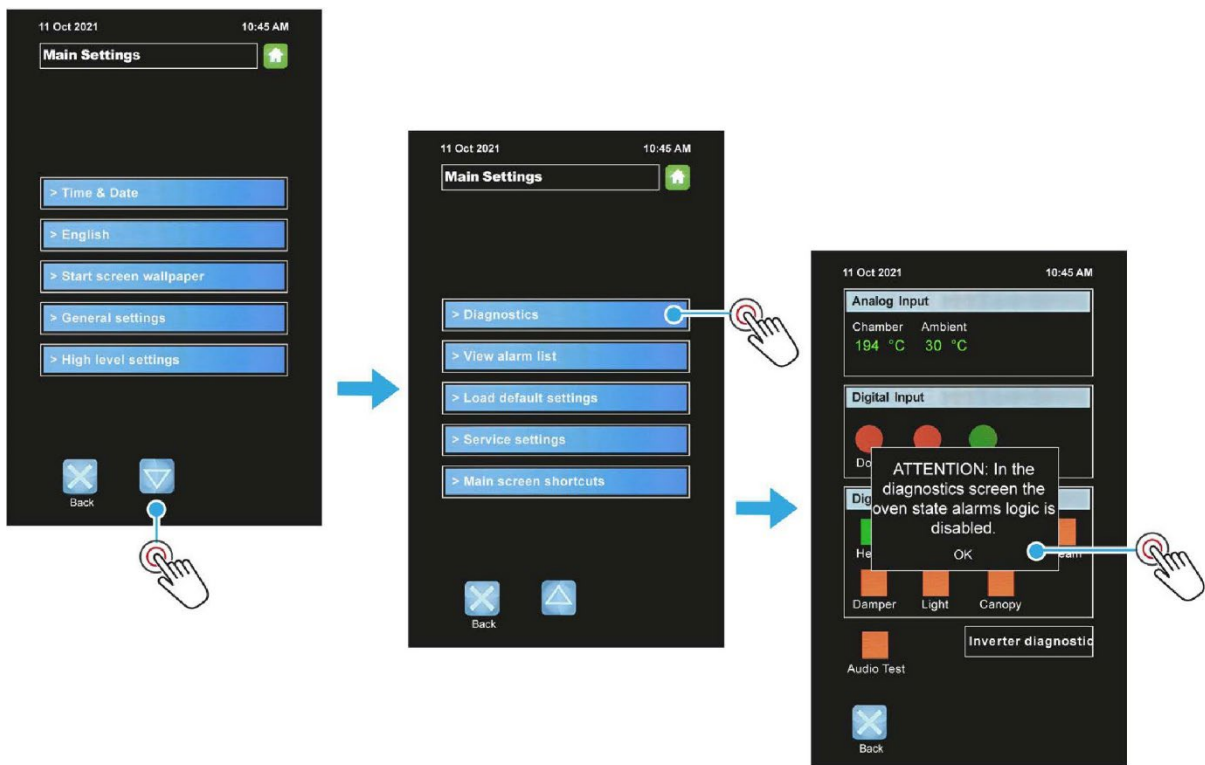
- | | | |
|-------------------------|-------------------|------------------------|
| ■ Door switch operation | ■ Fan forward | ■ Lights on/off |
| ■ Fan overload | ■ Fan reverse | ■ Canopy |
| ■ Overheat | ■ Steam solenoid | ■ Audio test |
| ■ Heater | ■ Damper solenoid | ■ Inverter (fan speed) |

Diagnostics procedure

1. Touch the **Settings** button.
2. Enter the **Oven Settings** password, and then touch **OK**.



3. Open the Diagnostic screen:
 - a. Touch the **Settings/Service** panel.
 - b. Touch the **Down Arrow** button until the **Diagnostic** box appears.
 - c. Touch the **Diagnostics** box.
 - d. Touch **OK** to clear the **Attention** window.

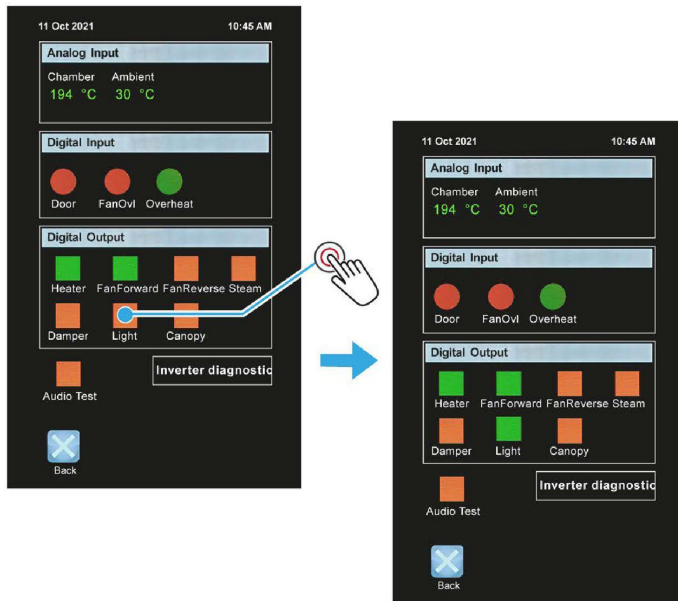


NOTE

- Default passwords for the various access levels are in [Appendix C](#). However, for security reasons, the passwords section may have been removed.

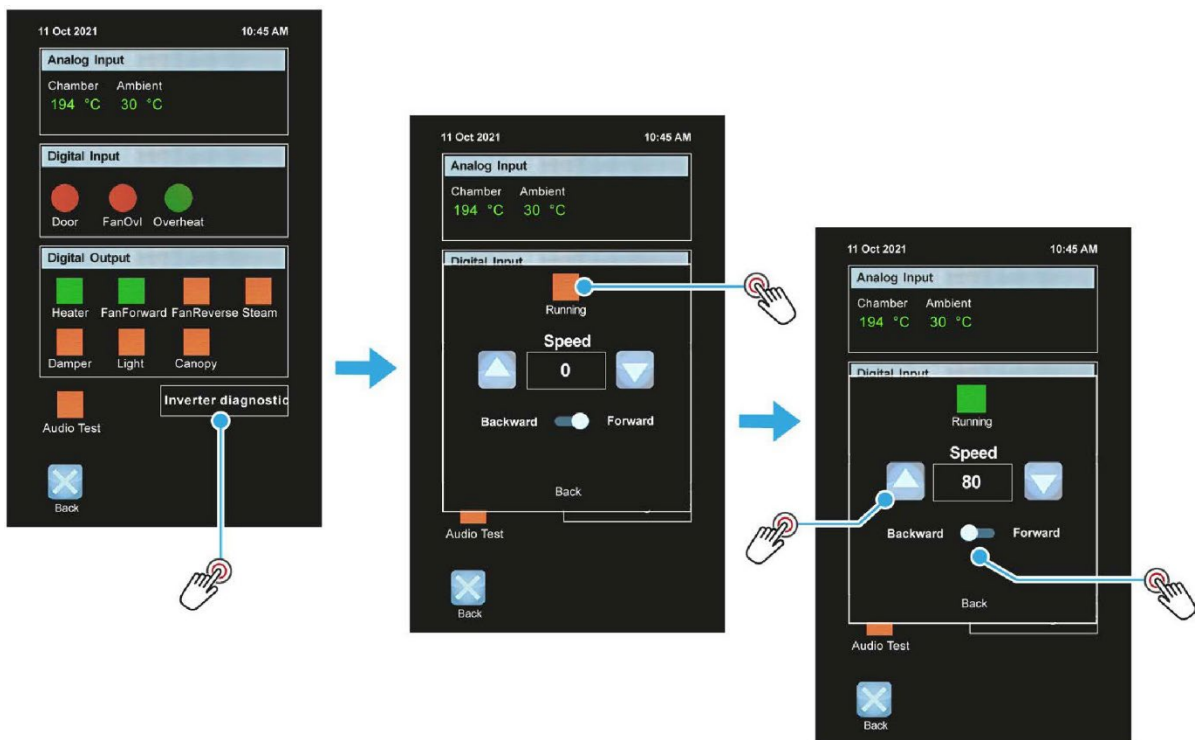
Using the diagnostics screen

1. Touch the item to be tested (e.g., **Light**).
 - The red square changes to a green square to indicate the testing is active.
2. Touch the same item again to end the test.
 - The green square changes back to a red square to indicate the test is not active.
3. Touch the **Back** button to exit diagnostics mode.



Using the Inverter Diagnostic screen

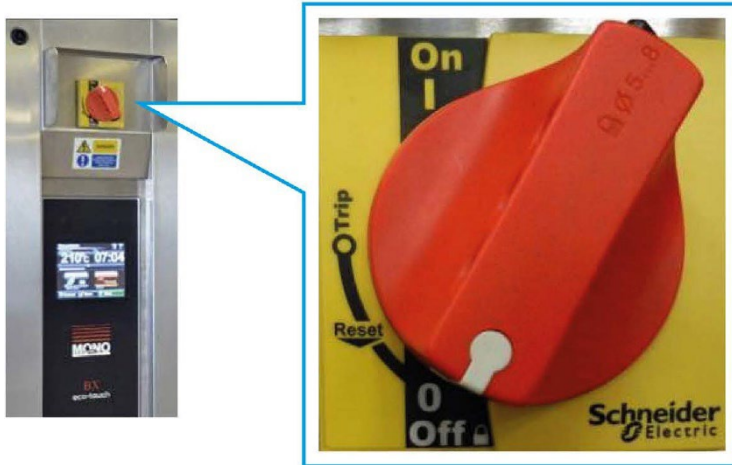
1. Touch the Inverter Diagnostic box.
2. Touch the red square (labelled as “running”) to start the testing.
 - The red square changes to a green square
3. Use the arrows to increase and decrease the fan speed.
4. Slide the direction option to the opposite position.
5. Touch the green square (labelled as “running”) to stop the testing.
 - The green square changes back to a red square
6. Touch Back to exit the screen.



5. Isolation

5.1. Isolating the oven from the electrical supply

To stop the oven in an emergency, switch off the electricity at the mains electrical isolator switch.



WARNING

- Always disconnect the oven from the consumer power supply if working on the electrical box and panel. Some components stay electrically energised even after the main isolator is in the 0 (OFF) position.

6. Cleaning

6.1. Safety messages



WARNING

- Always disconnect or isolate the electrical supply and allow the oven to cool before cleaning.
- Be aware that the surfaces of the oven can remain hot for several hours. Wear protective gloves and appropriate clothing when cleaning.
- Do not remove any covers, panels, or pipe fittings for cleaning.
- Do not clean the oven while it is powered or operating.



CAUTION

- Clean the oven by following the daily and weekly tasks in this user manual.
- Use only a mild, chloride-free cleaning product on outside surfaces.
- Never use aggressive chemicals, i.e. solvents, thinners, etc.
- Take care that liquid does not enter the control panel or any of the other access covers/panels.
- Never spray the oven with water (or any kind of liquid) using a hose or pressure washer. Never use compressed-air jets on the oven.
- Care must be taken to not damage parts inside the oven.

6.2. Daily cleaning

Before undertaking this task, ensure the oven is disconnected or isolated from the electrical supply and that the oven and heating elements are completely cold.

Daily cleaning tasks

1. Sweep any debris out of the oven after it has been allowed to cool.
 - Cooling down could take several hours.
 - Use a vacuum cleaner if necessary, **but only when the oven is completely cold.**
2. Wipe the oven front, back and sides with a damp cloth.
3. Spot clean outside with a damp cloth, soaked in a solution of mild detergent and hot water.
 - Pay particular attention to ensure excess water is not applied near electrical panels.

6.3. Weekly cleaning

Before undertaking this task, ensure the oven is disconnected or isolated from the electrical supply and that the oven and heating elements are completely cold.

Weekly cleaning tasks

1. Complete the daily cleaning procedure.
2. Clean any burnt-on debris by scrubbing it with a stiff brush and, if necessary, a damp cloth.
3. Use a nylon brush to scrub the cabinet wheels (if fitted) with a mild detergent and hot water.
 - Using too much water eventually rusts the metalwork.

7. Maintenance

7.1. Safety messages

**WARNING**

- Always disconnect or isolate the electrical supply before starting any maintenance work on the oven.
 - Some components stay electrically energised even after the main isolator is in the 0 (OFF) position.
-

**WARNING**

- The ECO Connect Plus Static Rack Oven must be maintained at regular intervals. The frequency of maintenance will depend upon your specific use and location. The maximum service interval should be 12 months.
 - Service and maintenance should only be undertaken by suitably qualified and experienced persons (SQEP).
 - You must immediately report any damage or defect arising with the appliance.
 - Unsafe equipment is dangerous. Do not use the appliance. Isolate the electrical supply and contact MONO Equipment or your appointed service agent.
-

7.2. General maintenance

The following general maintenance is recommended:

- Check for any visible damage or signs of tampering.
 - Do not use the machine if it is clearly damaged, i.e. frayed or bare wires are visible.
 - Report the damage but do not attempt to make any repairs yourself.
- Follow the cleaning instructions in [Chapter 6](#).

8. Service

If a fault arises, please do not hesitate to contact MONO Equipment's Service and Spares department. Be prepared to provide the Serial Number from the machine's information plate or the front page of this User Manual in all communications.

8.1. Contact information for customer services

MONO Equipment Limited

Queensway
Swansea West Industrial Park
Swansea
SA5 4EB
United Kingdom
www.monoequip.com

Contacts

spares@monoequip.com
+44 (0)1792 564039

techsupport@monoequip.com
+44 (0)1792 564041

service@monoequip.com
+44 (0)1792 564048

Switchboard
+44 (0)1792 564039

8.2. Further information

Visit MonoEquip.com for the latest versions of this user manual. Also find up-to-date information about all MONO's products.

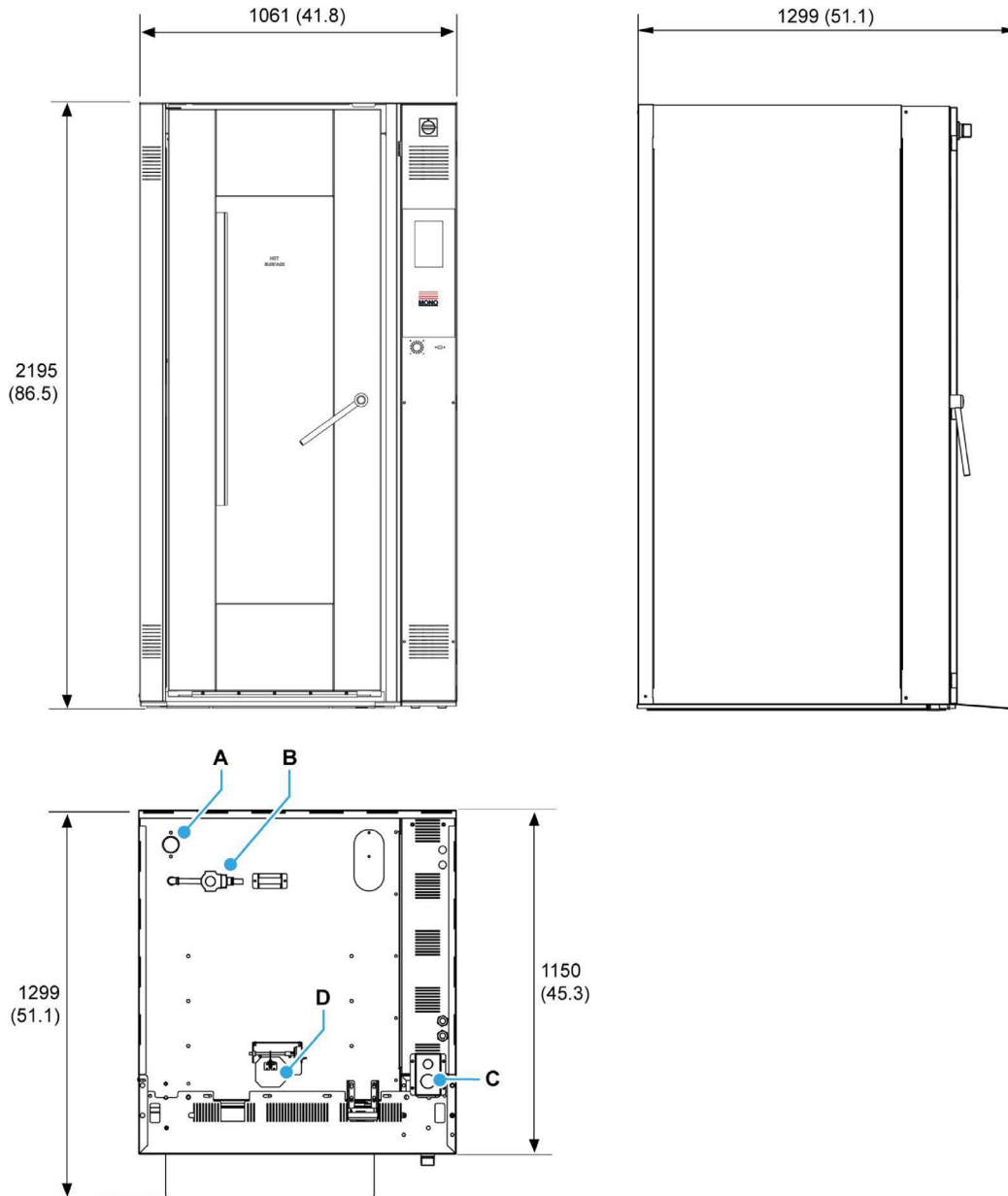
8.3. Environmental disposal

Dispose of the machinery with care when it comes to the end of its working life. Use the most environmentally-friendly manner possible by recycling or other means of disposal which complies with local regulations. Only dispose of the machine safely and legally. The Environmental Protection Act 1990 applies in the United Kingdom.

A. Dimensional Drawings

A.1 ECO Connect Plus Static Rack Oven dimensions

Figure A.1: Left-Hand (LH) ECO Connect Plus Static Rack Oven dimensions



- | | | | |
|-----------------------|----------------|---------------------|----------------|
| A. Oven pressure vent | B. Water inlet | C. Electrical inlet | D. Oven damper |
|-----------------------|----------------|---------------------|----------------|

Dimensions are in mm (inches) unless otherwise stated. All references to "LH" ovens mean that the main door is hinged on the left and the touchscreen control panel is on the right. Conversely, for "RH" ovens, the main door is hinged on the right and the touchscreen is on the left.

B. Specifications

B.1 Electrical specifications



WARNING

- Check that the electrical data on the oven's information plate. Contact MONO Equipment if there is a mismatch between the nameplate information and the mains supply at the site.
- An electrical socket must be protected by a 30mA-rated Type 'B' Residual Current Device (RCD) before installation and commissioning of the oven.
- The RCD is a safety device, which automatically switches off the supply if an earth fault develops. Test the RCD upon completion of the installation and quarterly for the lifetime of the oven.
- An experienced and qualified electrician must carry out all electrical work in accordance with national and local regulations.

Power supply

See [Table B.1](#) for supply options.



The supply to this machine must be protected by a 30mA-rated Type 'B' Residual Current Device (RCD) prior to installation and commissioning.

Power cable

A power cable is not supplied with the oven. The customer is to supply the power cable in accordance with the appropriate regulations (see [Appendix A](#) for the electrical inlet location).

Electrical panel

Membrane-operated touchscreen

Table B.1: Single supply specifications

Oven version	Voltage	Phase	Current	Total Power
Standard	415 Vac (50 Hz)	Three-phase +N +E	39 Amps per phase	28 kW ⁽¹⁾

(1) Heating output is 27 kW

B.2 Environmental specifications

Noise level

Less than 85 dB

Ambient temperature

Up to 40 °C (115 °F)

B.3 Mechanical specifications

Heights⁽¹⁾	2195 mm (86½ inches) – outside 1900 mm (75 inches) – inside
Widths⁽¹⁾	1061 mm (42 inches)
Depth⁽¹⁾	1150 mm (45¼ inches) - not including handle or access ramp 1299 mm (51¼ inches) - including handle or access ramp 1800 mm (71 inches) - when the door is open
Footprint	1.15 m ²
Weight	To be advised
Tray size	600mm x 400mm, 30 inches x 18 inches, and 26 inches x 18 inches
Steam system	Solenoid operated, high-mass water injection supply
Damper system	Solenoid operated (automatic), trapdoor type
Max trolley size	560mm x 760mm (22 inches x 30 inches) footprint including bar

(1) See [Appendix A](#) for dimensions drawing.

B.4 Water specifications

The following water specifications are recommended for correct operation of the steam system:

Pressure range	2 to 5.5 bar (29 to 80 psi) - typical for domestic water supplies
Hardness range	0 to 4 grains per gallon
PH range	7.0 to 8.5
Chloride	0 to 30 ppm
Calcium	0 to 4 ppm
Magnesium	0 to 4 ppm
Alkalinity	0 to 20 ppm



NOTE

- Customers are responsible for installing and maintaining an adequate water supply to the oven, which should comply with local water regulations. Check with your local water authority.

Drain	No drainage is required
--------------	-------------------------

(Intentional Blank Page)

C. Passcodes

C.1 Default passcodes

Table C.1: Default passcodes

Security access	Default passcode
Operator access (for naming and saving programs)	1111
Oven Settings access (time, date, etc.)	2222
High Level Settings access	3412

Suggestion

To stop unauthorised changes to the oven setup, it is suggested that this page is redacted or removed from this manual and kept in a safe place for future reference.

If tampering could be a problem, it is also a good idea to change the passcodes at regular intervals.

D. Electrical Drawings

D.1 Static Rack Oven electrical drawings

165E25-00010 Inverter and LED Lights Production Wiring	page 47
165E25-00011 Fan Motor Connections and Heating Element Wiring (1)	page 48
165E25-00015 Printed Circuit Board (PCB) Outputs	page 49
165E25-00016 24V Inputs and LED Light Wiring	page 50
165E25-00017 CJB Touch Controller Layout	page 51
165E25-00018 Fan Motor Connections and Heating Element Wiring (2)	page 52
165E25-00019 Heating Power Circuit Diagram	page 53

Figure D.1: 165E25-00010 Inverter and LED Lights Production Wiring

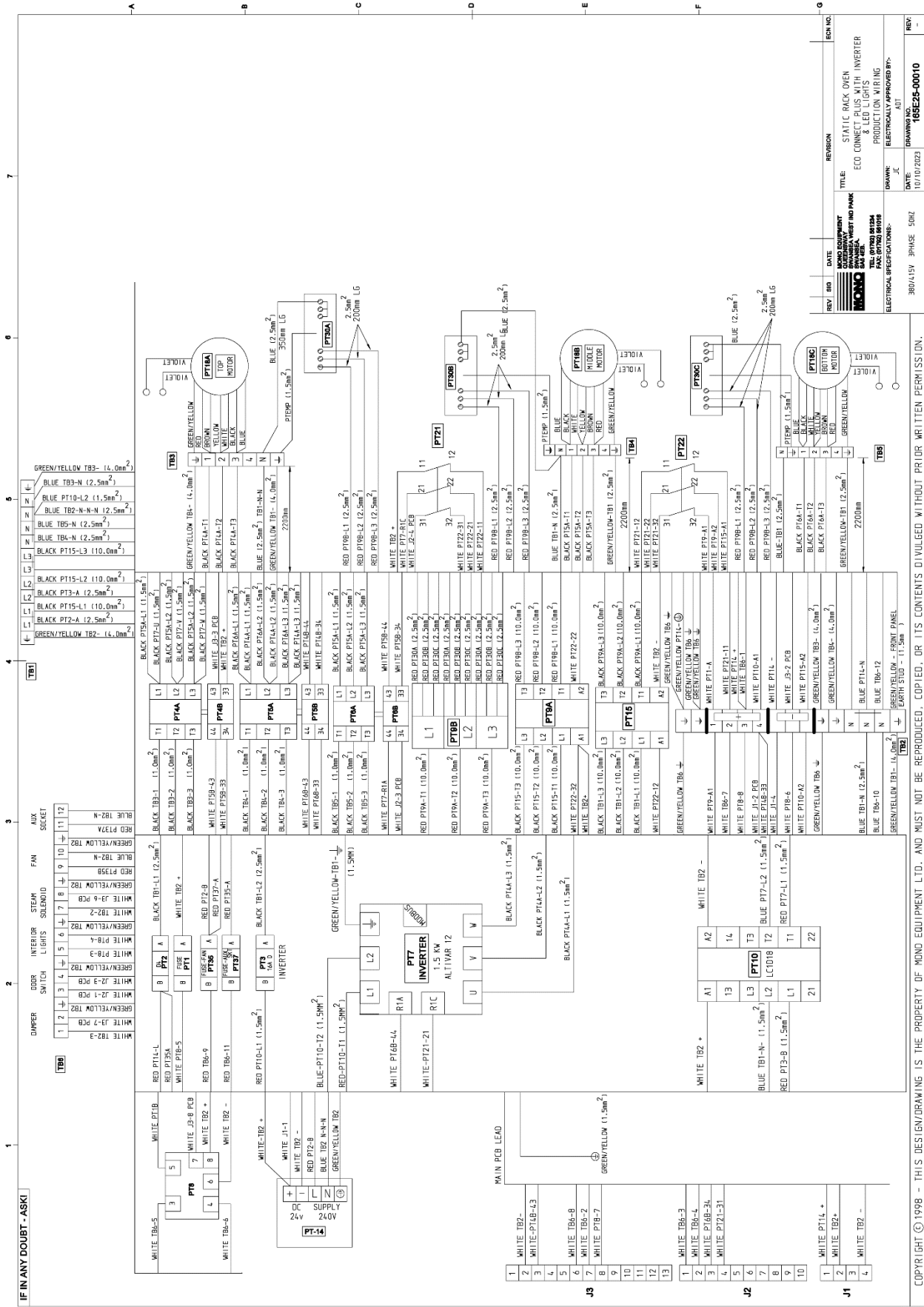


Figure D.2: 165E25-00011 Fan Motor Connections and Heating Element Wiring (1)

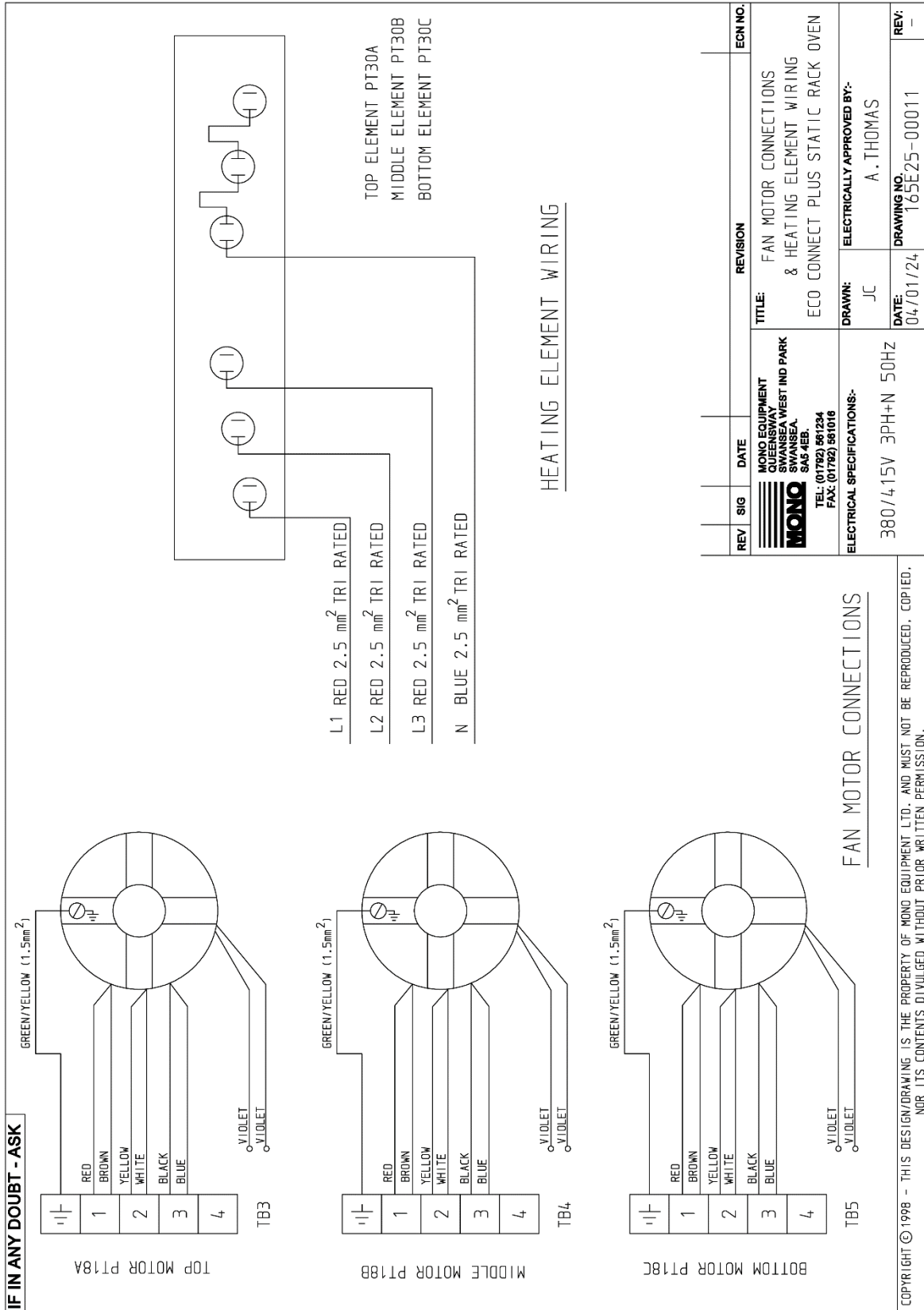


Figure D.3: 165E25-00015 Printed Circuit Board (PCB) Outputs

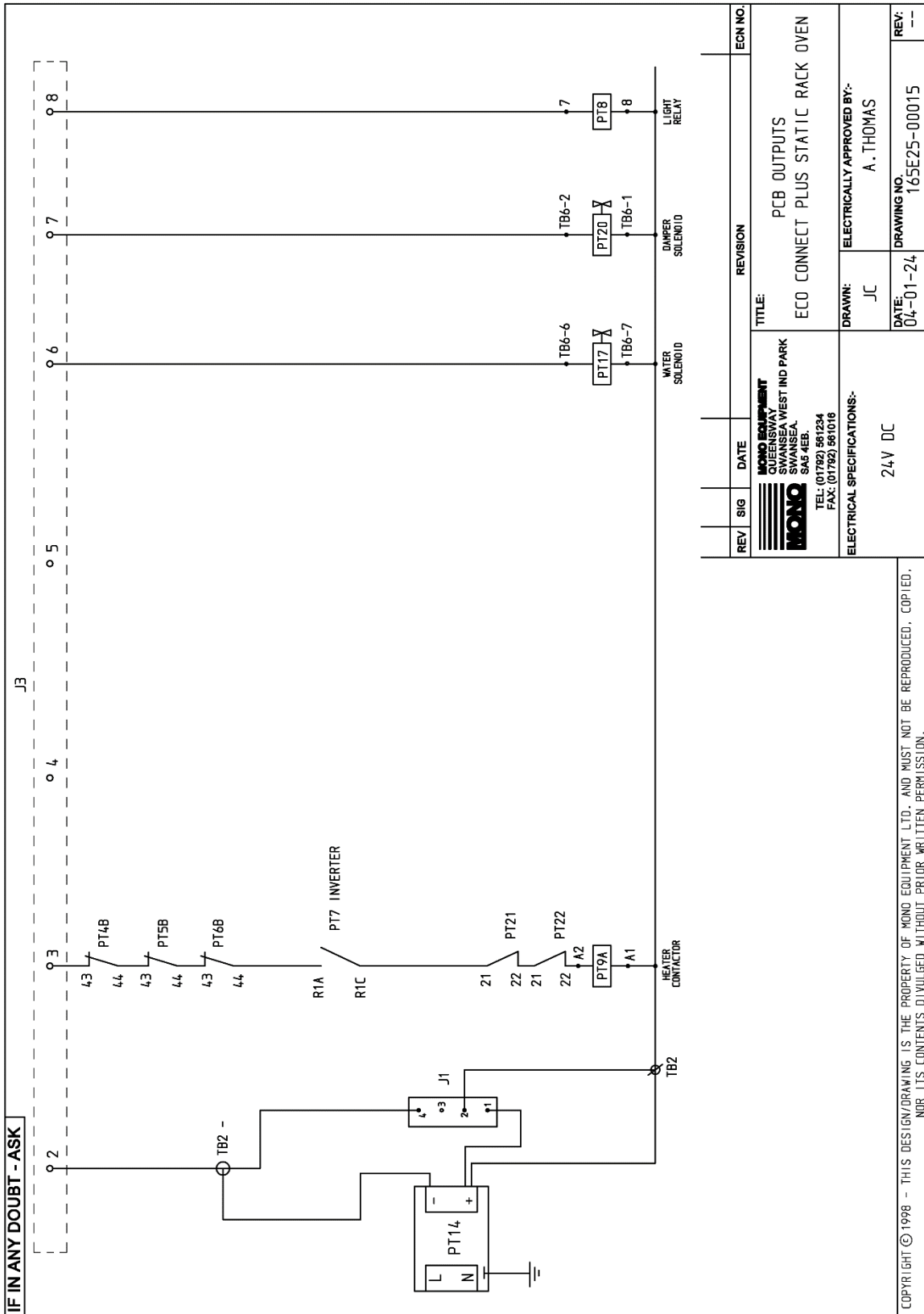


Figure D.4: 165E25-00016 24V Inputs and LED Light Wiring Diagram

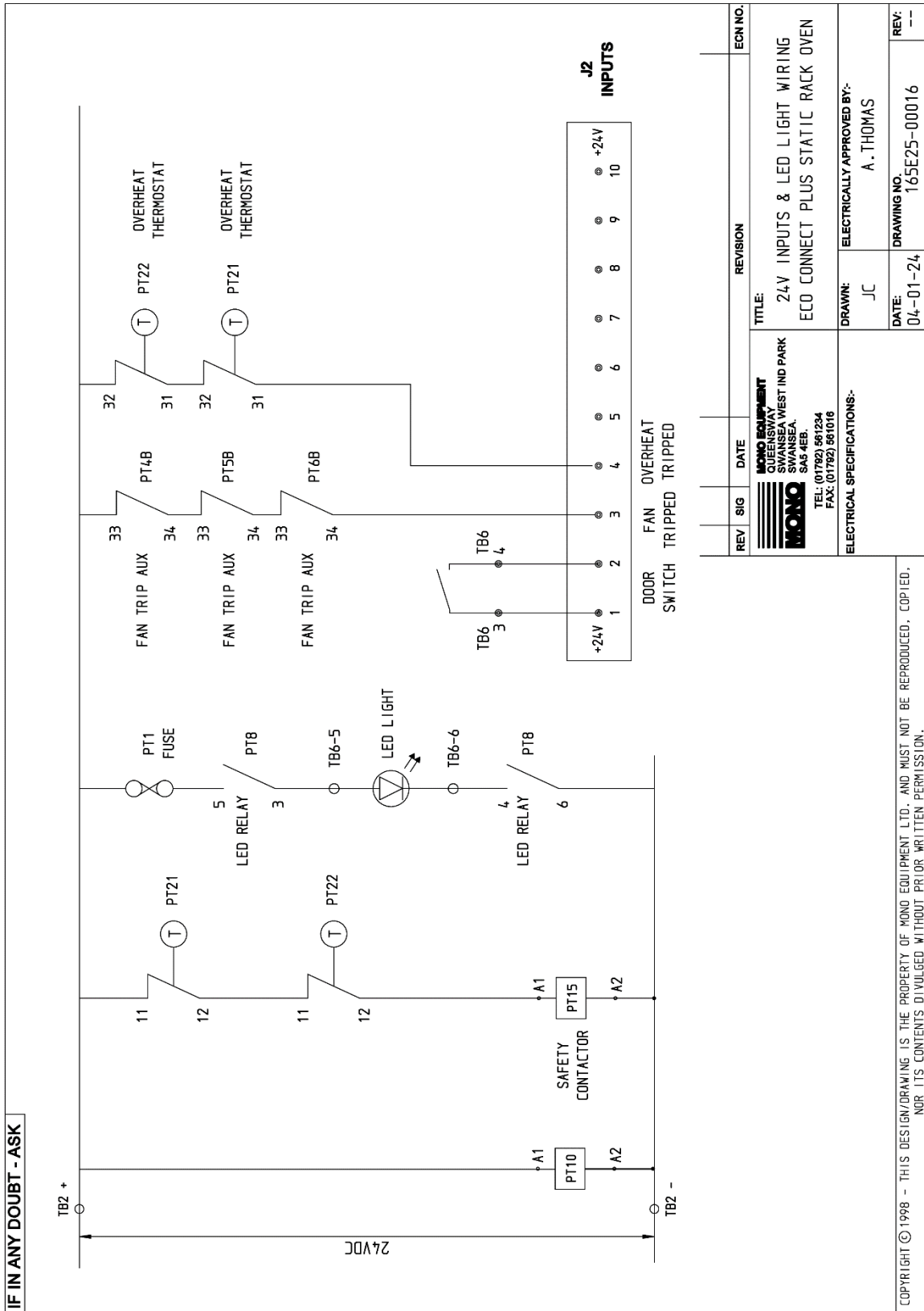


Figure D.5: 165E25-00017 CJB Touch Controller Layout

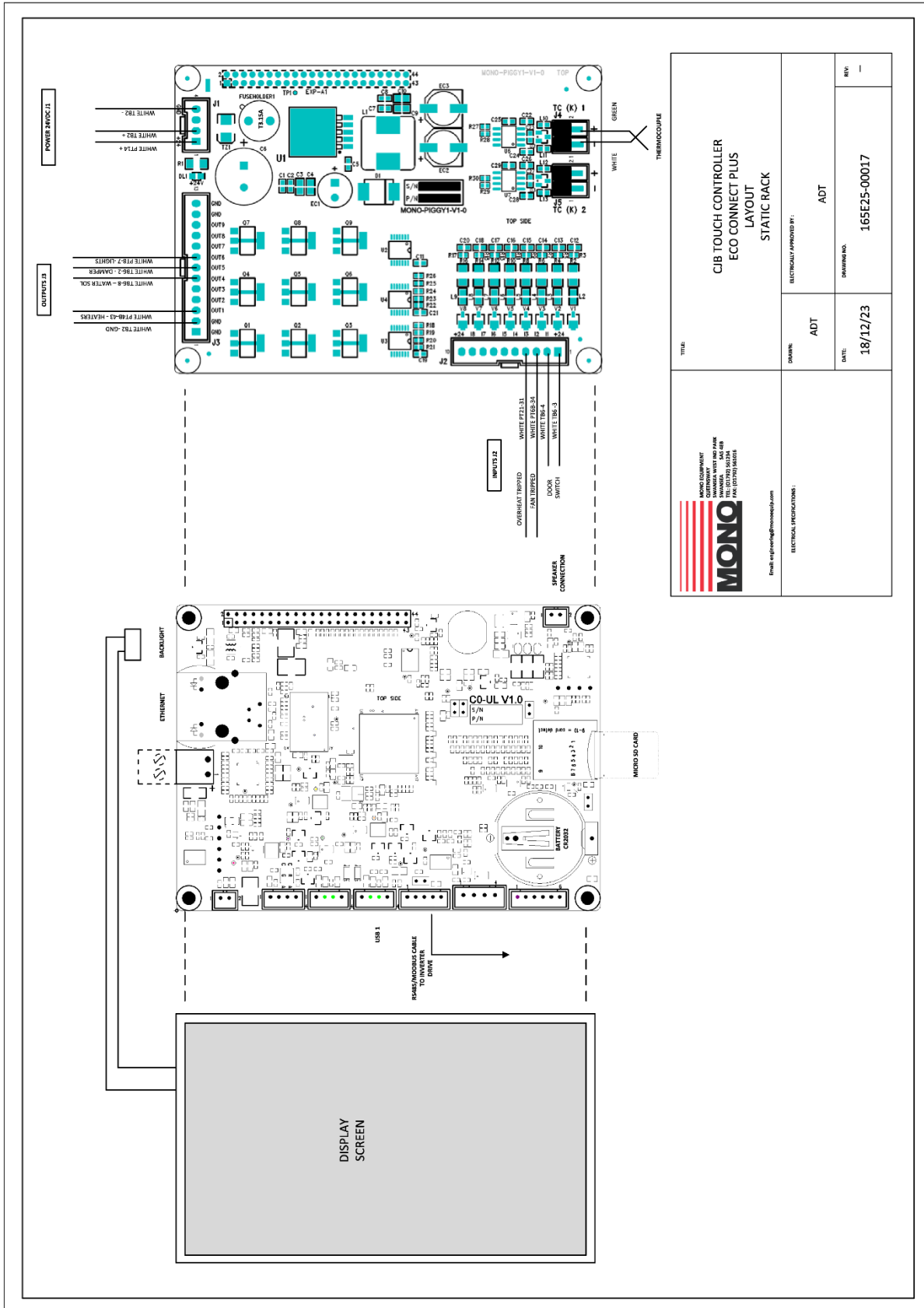
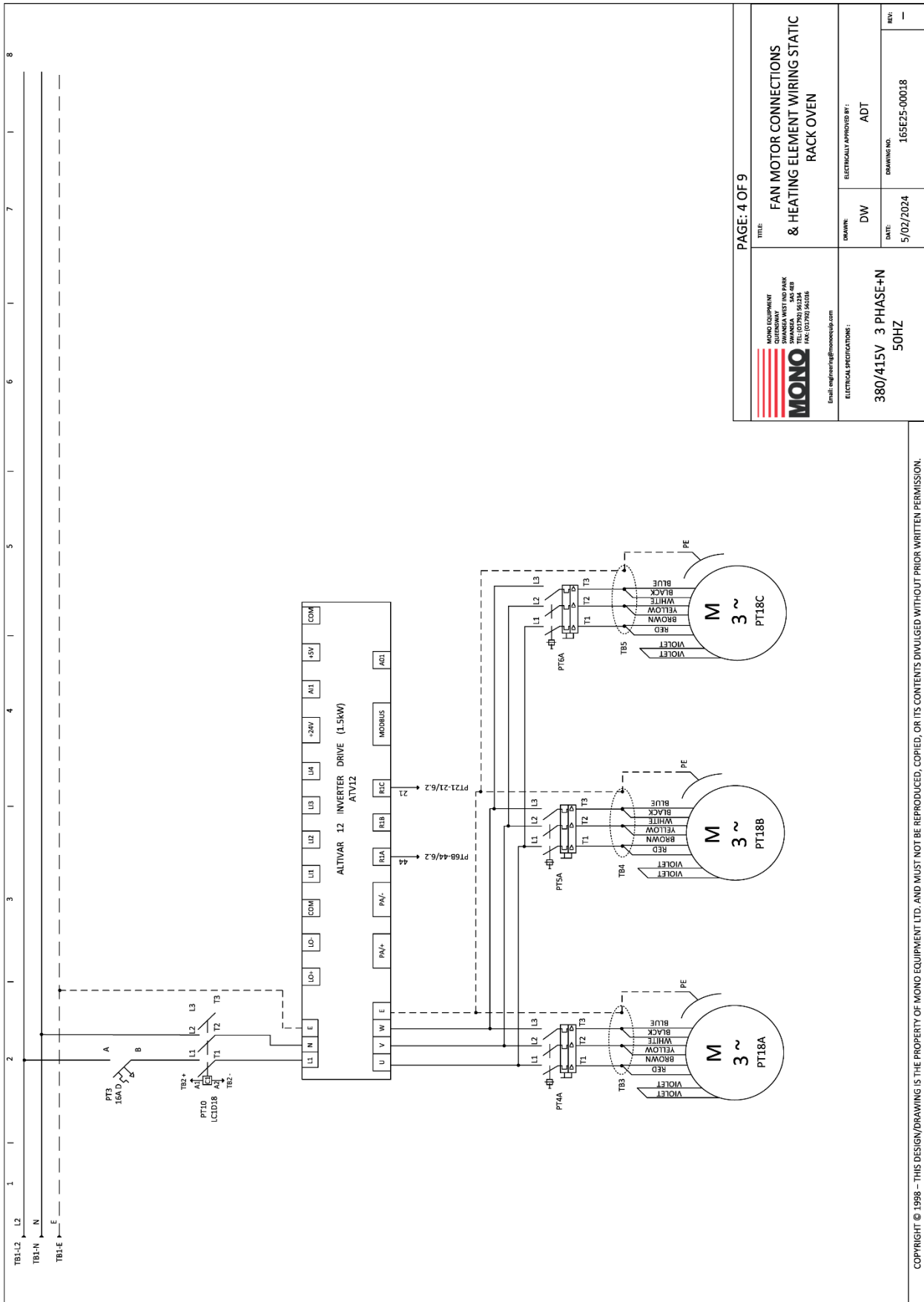


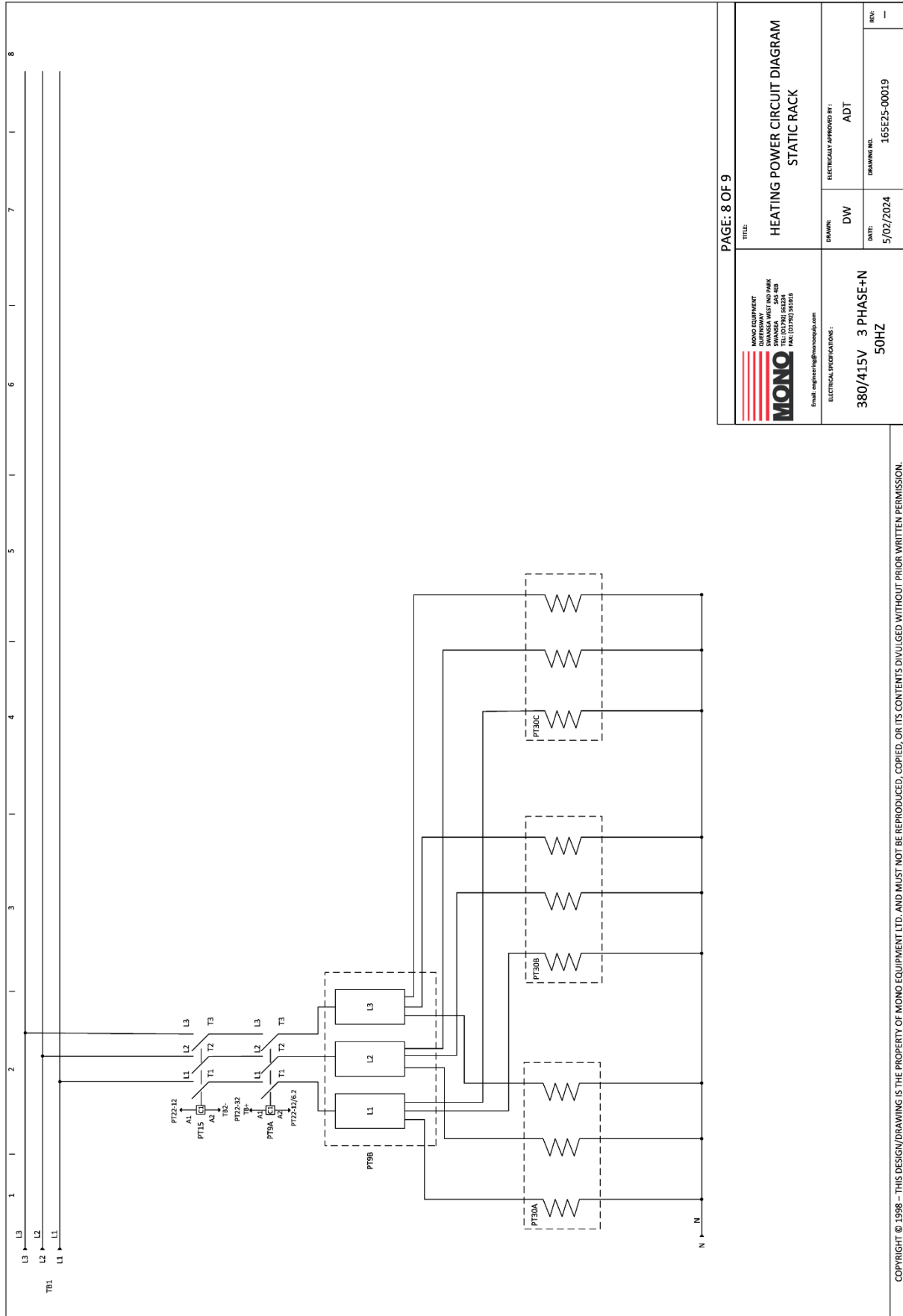
Figure D.6: 165E25-00018 Fan Motor Connections and Heat Element Wiring (2)




<p>MONO EQUIPMENT QUENSBURY 2000 WEST 10TH AVE SWANSEA, MA 01938 TEL: (508) 833-3333 FAX: (508) 833-3333 Email: engineering@monoequip.com</p>		PAGE: 4 OF 9	
TITLE: FAN MOTOR CONNECTIONS & HEATING ELEMENT WIRING STATIC RACK OVEN			
DRAWN: DW	ELECTRICALLY APPROVED BY: ADT	DATE: 5/02/2024	DRAWING NO. 165E25-00018
ELECTRICAL SPECIFICATIONS: 380/415V 3 PHASE+N 50HZ		REV: -	

COPYRIGHT © 1998 - THIS DESIGN/DRAWING IS THE PROPERTY OF MONO EQUIPMENT LTD., AND MUST NOT BE REPRODUCED, COPIED, OR ITS CONTENTS DIVULGED WITHOUT PRIOR WRITTEN PERMISSION.

Figure D.7: 165E25-00019 Heating Power Circuit Diagram



 <p>MONO EQUIPMENT 10000 WALKER BLVD SUITE 100 SWANSEA, MA 01903 TEL: (508) 548-1188 FAX: (508) 548-1185 Email: engineering@monoquip.com</p>		PAGE: 8 OF 9	
TITLE: HEATING POWER CIRCUIT DIAGRAM STATIC RACK			
DRAWN: DW	ELECTRICALLY APPROVED BY: ADT		
DATE: 5/02/2024	DRAWING NO.: 165E25-00019		
ELECTRICAL SPECIFICATIONS: 380/415V 3 PHASE+N 50HZ		REV: -	

COPYRIGHT © 1998 - THIS DESIGN/DRAWING IS THE PROPERTY OF MONO EQUIPMENT LTD. AND MUST NOT BE REPRODUCED, COPIED, OR ITS CONTENTS DIVULGED WITHOUT PRIOR WRITTEN PERMISSION.

D.2 ECO Connect Plus Static Rack Oven Parts List

Table D.1: Parts list (Sheet 1 of 2)

Description	Part number	Part ref. ⁽¹⁾
Interior LED light fuse	B842-85-030	Pt 1
Control circuit MCB	B872-22-062	Pt 2
Fan motor overload - (TOP)	B801-03-020	Pt 4a
Fan motor overload auxiliary (TOP)	B801-14-012	Pt 4b
Fan motor overload - (MIDDLE)	B801-03-020	Pt 5a
Fan motor overload auxiliary (MIDDLE)	B801-14-012	Pt 5b
Fan motor overload - (BOTTOM)	B801-03-020	Pt 6a
Fan motor overload auxiliary (BOTTOM)	B801-14-012	Pt 6b
Interior light relay	B723-37-004	Pt 8a
Interior light relay base	B723-36-001	Pt 8b
Heater contactor	B801-08-020	Pt 9a
Heater wiring distribution block assembly	B859-50-001 (3 off)	Pt 9b
Fan motor contactor forward (TOP MOTOR)	B801-08-031	Pt 10a
Fan motor contactor reverse (TOP MOTOR)	B801-08-031	Pt 10b
Fan motor contactor forward (MIDDLE MOTOR)	B801-08-031	Pt 11a
Fan motor contactor reverse (MIDDLE MOTOR)	B801-08-031	Pt 11b
Fan motor contactor forward (BOTTOM MOTOR)	B801-08-031	Pt 12a
Fan motor contactor reverse (BOTTOM MOTOR)	B801-08-031	Pt 12b
24V Power supply	B801-93-043	Pt 14
Heater safety contactor	B801-08-020	Pt 15
Damper solenoid	B749-83-004	Pt 17
Fan motor – (TOP)	B720-74-005	Pt 18a
Fan motor – (MIDDLE)	B720-74-005	Pt 18b
Fan motor – (BOTTOM)	B720-74-005	Pt 18c
Water solenoid	B965-83-007	Pt 20
Overheat thermostat - (TOP)	B888-30-014	Pt 21
Overheat thermostat - (BOTTOM)	B888-30-014	Pt 22
Oven thermocouple	B873-95-006	Pt 23
PCB Assembly	B790-97-001	Pt 24

Table D.1: Parts list (Continued) (Sheet 2 of 2)

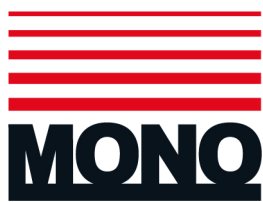
Description	Part number	Part ref. ⁽¹⁾
Main isolator 80 A	B801-07-002	Pt 26
Door switch	B801-11-001	Pt 27
Interior LED light unit	166-13-00063	Pt 28
Heating element, 9Kw – (TOP)	B847-04-081	Pt 30a
Heating element, 9Kw – (MIDDLE)	B847-04-081	Pt 30b
Heating element, 9Kw – (BOTTOM)	B847-04-081	Pt 30c
Cooling fan (OPTIONAL)	B869-75-018	Pt 34
Cooling fan fuse (OPTION)	B842-85-025	Pt 35
Aux power outlet (OPTIONAL)	B970-06-001	Pt 36
Aux power outlet fuse (OPTION)	B842-85-039	Pt 37

(1) See electrical drawings in previous section.

MONO Equipment is the leading designer and manufacturer of bakery equipment in the United Kingdom. This proud heritage of British craftsmanship, combined with a reputation for creating high-quality, innovative products, can be traced back to its origins in 1947.

All our bakery equipment is manufactured to the most stringent NQA ISO9001:2015 & NQA ISO14001:2015 standards and is crafted using the very latest, cutting-edge technology combined with the time-honoured skills of the master craftsman.

MONO Equipment truly excels in providing tailor-made solutions to a diverse range of clients, from the small independent artisan baker to the large retail chains found on every high street and in every out-of-town shopping centre. We can supply everything from a simple Food-2-Go cafe oven to the entire list of bakery equipment needed to set up a full scratch bakery.



MONO Equipment Limited

Queensway
Swansea West Industrial Park
Swansea
SA5 4EB

Tel: +44 (0)1792 561 234 (Switchboard)
Tel: +44 (0)1792 564 000 (UK Sales)
Tel: +44 (0)1792 564 004 (International Sales)
Tel: +44 (0)1792 564 048 / +44 (0)1792 564 049 (Spares)
Fax: +44 (0)1792 561 016

Email: sales@monoequip.com
web: www.monoequip.com



*Scan using your smart
phone to view our website*

